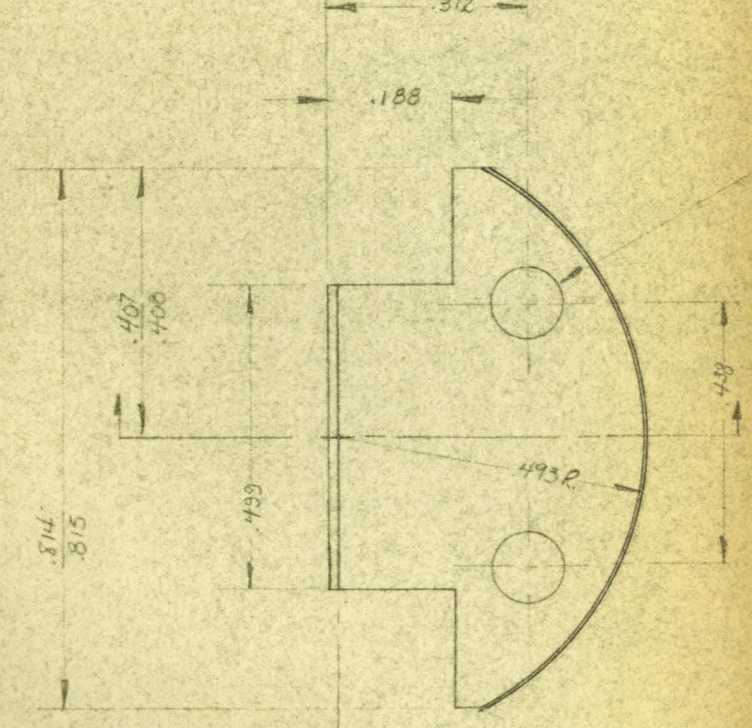
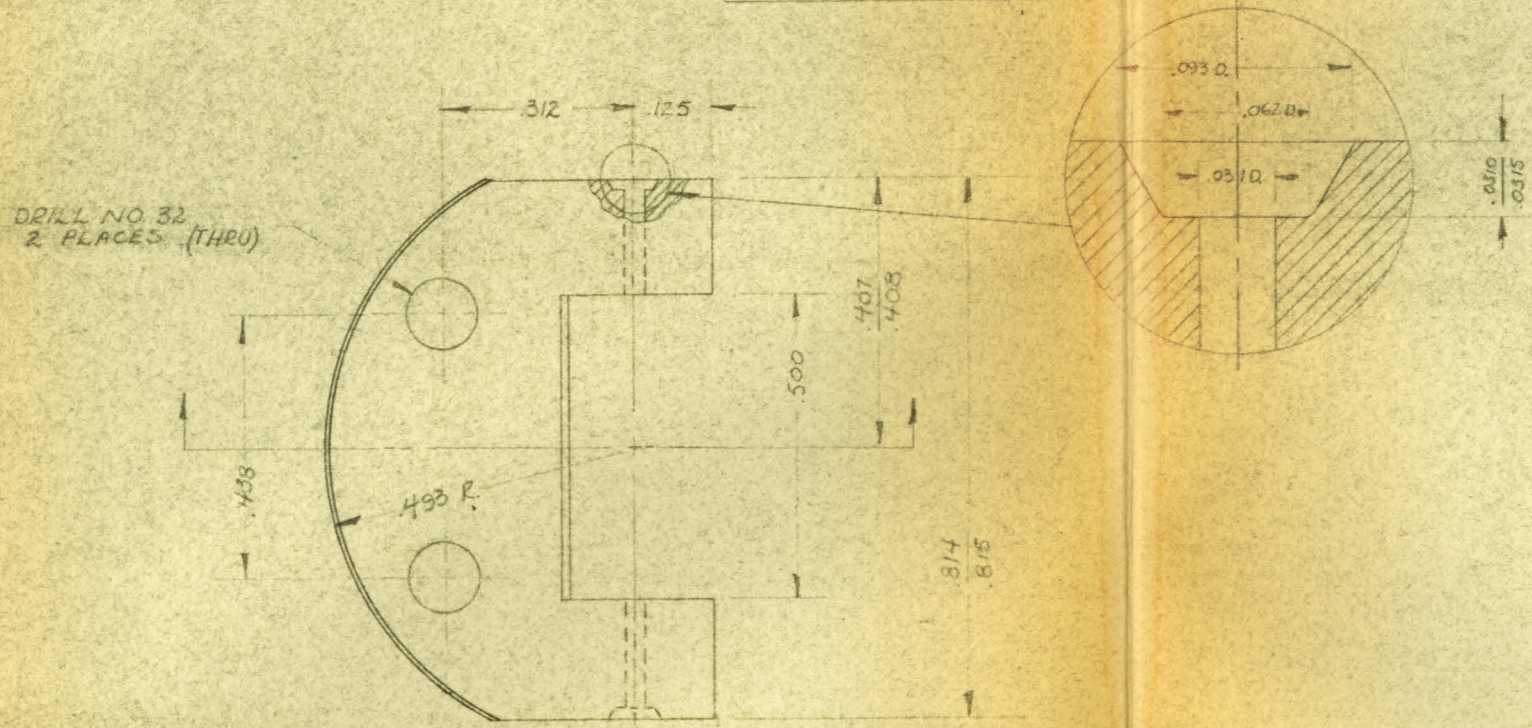


2	L. H. FORM		C 1020
NO.	PART NAME	REQD.	MATERIAL
ENGINEERING DESIGN CALIFORNIA INSTITUTE OF TECHNOLOGY			DR: J.R. BARNES
			APP'D:
			SCALE: 4X FULL
			DATE: 7-1-65
STRETCH FORMER ASSEMBLY			TOLEANCES DWG. NO.
			± .005" ± 0.5° 51

3	R. H. FORM	1	C 1020
NO.	PART NAME	REQD.	MATERIAL
ENGINEERING DESIGN CALIFORNIA INSTITUTE OF TECHNOLOGY			DR: J.R. BARNES
			APP'D:
			SCALE: 4X FULL
			DATE: 7-1-65
STRETCH FORMER ASSEMBLY			TOLEANCES DWG. NO.
			± .005" ± 0.5° 52



DRILL NO. 32 - 2 PLACES (THRU)

NOTE: DOWELL TO SLIDE AFTER SET UP

NOTE: DOWELL TO BASEPLATE AFTER SETUP

