

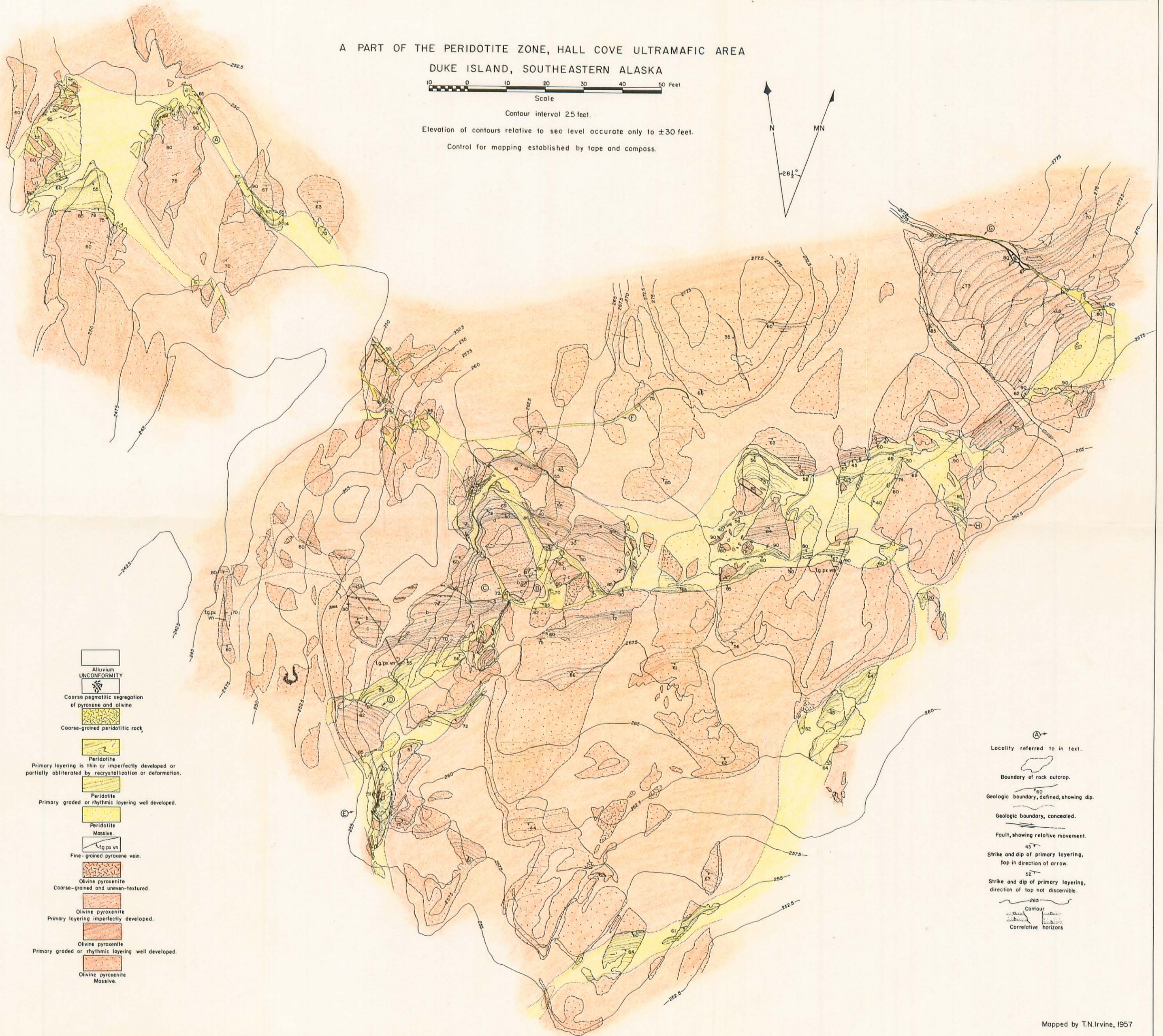
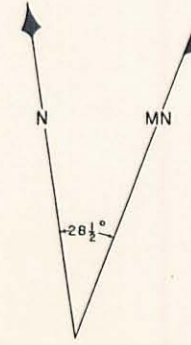
A PART OF THE PERIDOTITE ZONE, HALL COVE ULTRAMAFIC AREA  
DUKE ISLAND, SOUTHEASTERN ALASKA



Contour interval 25 feet.

Elevation of contours relative to sea level accurate only to  $\pm 30$  feet.

Control for mapping established by tape and compass.



- Alluvium UNCONFORMITY
- Coarse pegmatitic segregation of pyroxene and olivine
- Coarse-grained peridotitic rock
- Peridotite  
Primary layering is thin or imperfectly developed or partially obliterated by recrystallization or deformation.
- Peridotite  
Primary graded or rhythmic layering well developed.
- Peridotite Massive
- Fine-grained pyroxene vein.
- Olivine pyroxenite  
Coarse-grained and uneven-textured.
- Olivine pyroxenite  
Primary layering imperfectly developed.
- Olivine pyroxenite  
Primary graded or rhythmic layering well developed.
- Olivine pyroxenite Massive.

- Locality referred to in text.
- Boundary of rock outcrop.
- Geologic boundary, defined, showing dip.
- Geologic boundary, concealed.
- Fault, showing relative movement.
- Strike and dip of primary layering, top in direction of arrow.
- Strike and dip of primary layering, direction of top not discernible.
- Contour
- Correlative horizons