

Geology surveyed by Bert H. Rogers, 1954-1955

EXPLANATION

QUATERNARY

- Recent: d (Debris, Stockpiles and waste); Qal (Alluvium, Gravel, sand, and silt); Qf (Fanglomerate. Includes terrace deposits).
- Pleistocene (?)

TERTIARY

- Paleocene: Silverado formation (Green clay shale and micaceous arkose; White, and red, white and buff mottled claystone. Carbonaceous claystone and lignite of base. Basal clay breccia. Angular fragments of residual clay and weathered parent rocks in clay matrix - fills local depressions in pre-Silverado weathered surface. † (Martinez fm. on Plate 1.))

CRETACEOUS

- Kgr (Granodiorite. Medium- to coarse-grained diorite to granodiorite.)
- Kdg (Diorite-gabbro. dgc: Residual clay derived by weathering of diorite-gabbro. *)
- qpl (Quartz latite porphyry. alc: Residual clay derived by weathering of quartz latite porphyry. *)

JURASSIC (?)

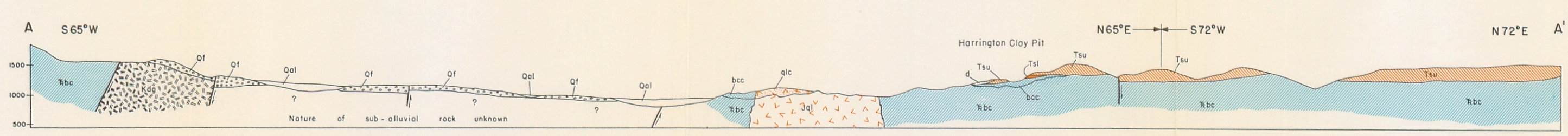
- Jlb (Volcanic breccia. Infrusive rock related to Santiago Peak volcanics.)
- Jp (Santiago Peak volcanics. Latite to andesite, mostly porphyritic, breccias and tuffs. sc: Residual clay derived by weathering of Santiago Peak volcanics. *)

TRIASSIC

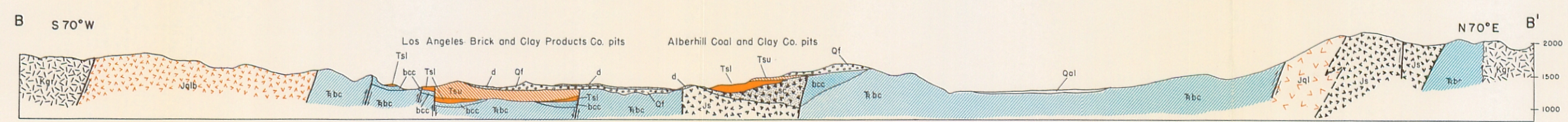
- bcc (Bedford Canyon formation. Slate, argillite, quartzite, siliceous dolomitic limestone and conglomerate. bcc: Residual claystone derived by weathering of Bedford Canyon formation. *)

* before deposition of Silverado formation

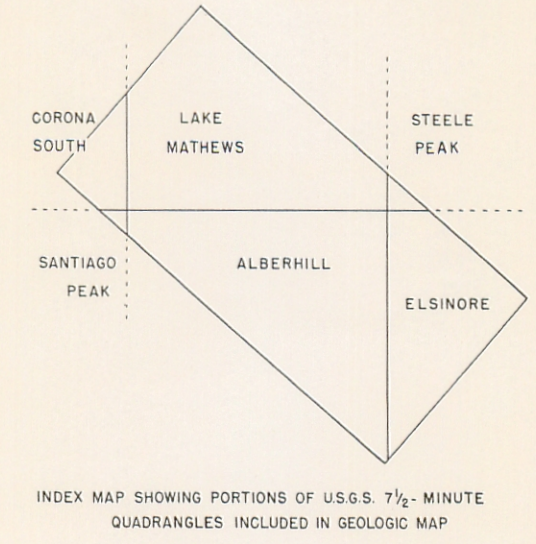
--- Contact (dashed where inferred, indefinite, or concealed).
 - - - Trace of fault, with dip of fault plane (dashed where inferred, dotted where concealed).
 --- Strike and dip of beds
 --- Strike of vertical beds
 --- Slide or slump
 --- Presumed dip, suggested by indistinct bedding
 --- Strike and dip of overturned beds



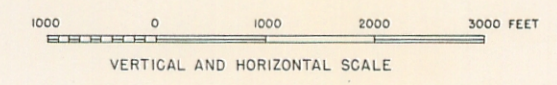
Cross-section A - A' across northern portion of Geologic Map of Southern Temescal Valley, by Bert H. Rogers



Cross-section B - B' across southern portion of Geologic Map of Southern Temescal Valley, topography and geology modified from Bert H. Rogers



INDEX MAP SHOWING PORTIONS OF U.S.G.S. 7 1/2-MINUTE QUADRANGLES INCLUDED IN GEOLOGIC MAP



GEOLOGIC MAP AND SECTIONS OF THE SOUTHERN TEMESCAL VALLEY REGION