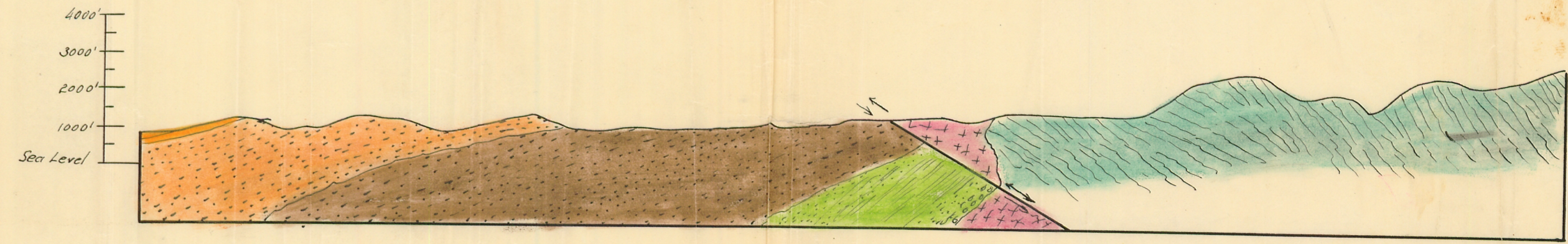
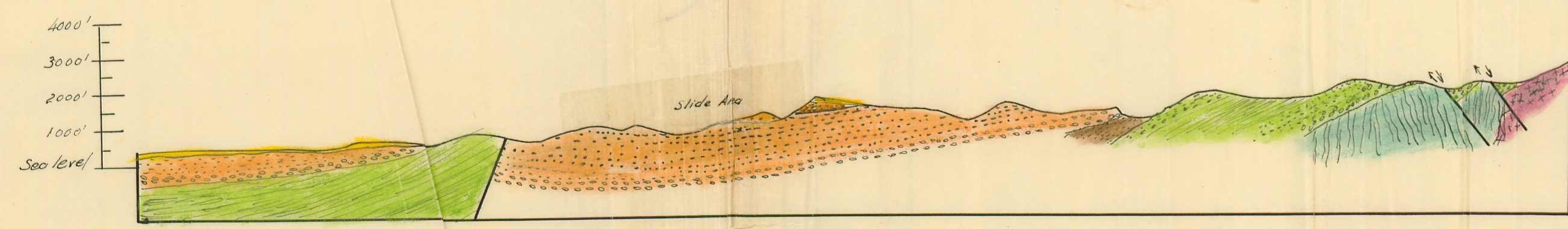
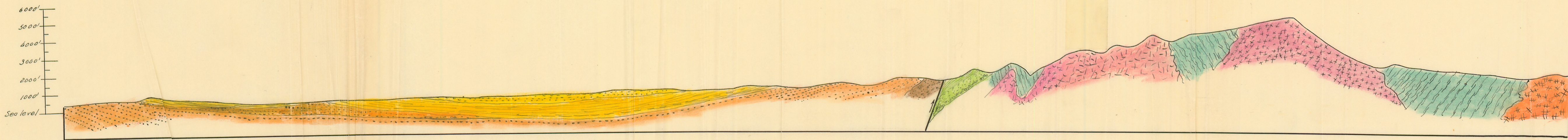
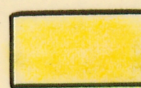



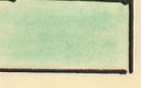



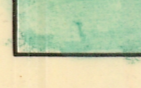
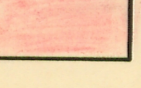
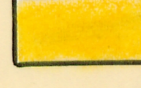
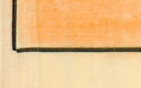





Moore - bn - 1930



STRUCTURE SECTIONS

Scale 1:42,000

- | | | | | |
|---|---|--|---|---|
|  Quaternary Alluvium |  Puente Upper Miocene |  Middle Eocene |  Hough Triassic |  Granodiorite - Jurassic(?) |
|  Terrace Gravels |  Temblor - Middle Miocene |  Martinez - Paleocene |  Silverado Slates Triassic |  Modjeska Diabase - Jurassic(?) |
|  Capistrano - Pliocene |  Vaqueros Lower Miocene |  Upper Cretaceous |  Qtz Diabase - Miocene(?) |  Modjeska Andesite - Jurassic(?) |
| | | | <i>Metamorphics</i> | |
| | | | <i>Unconformity</i> | |