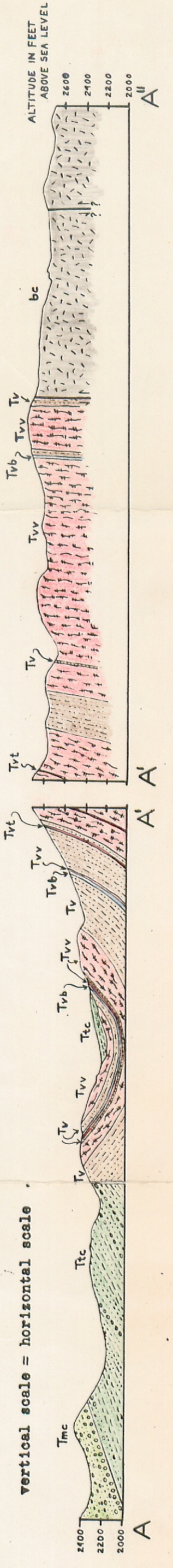
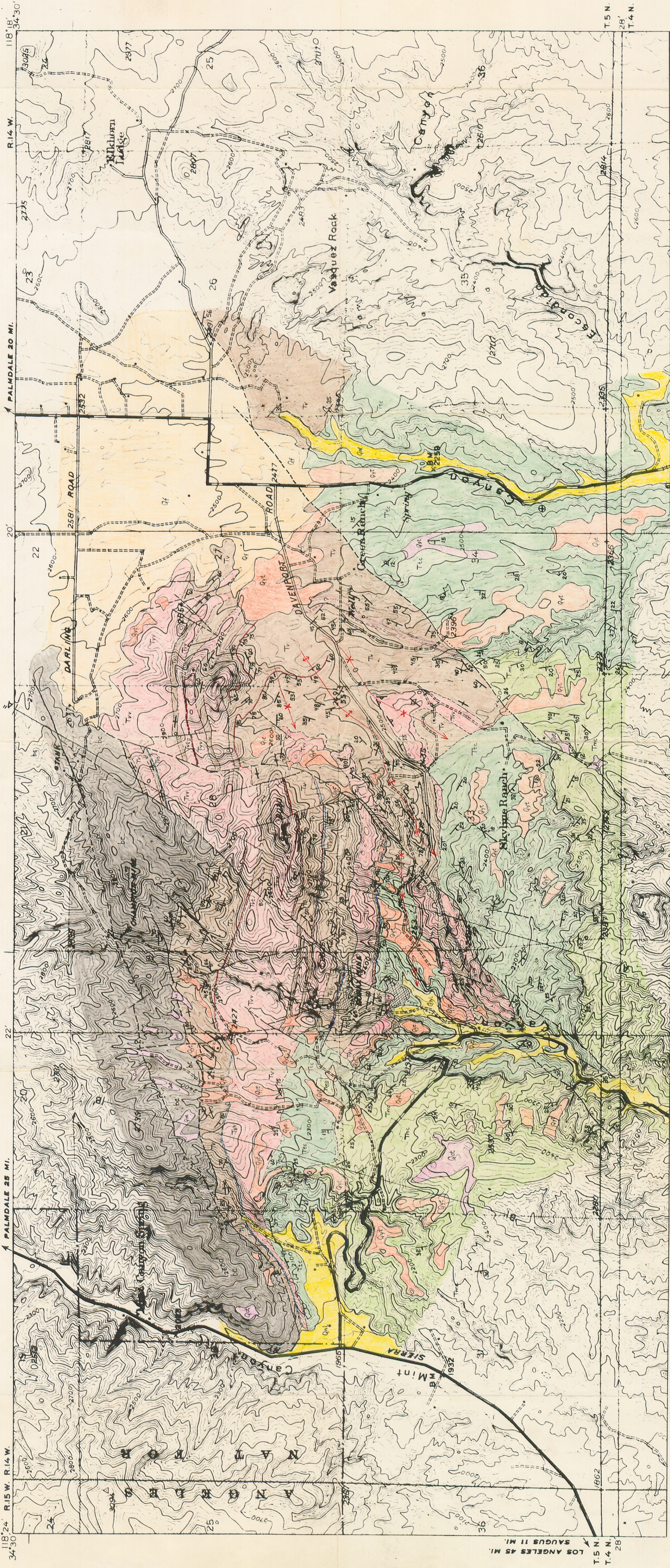


Birman_jh-1950
MS



EXPLANATION

- Q_{al}
ALLUVIUM
- Q_t
PAK
Sands and gravels containing
Pelona schist, basement
complex, volcanic, and
sedimentary detritus.
- Q_{yt}
YOUNGER TERRACE
Unconsolidated gravels
composed of basement complex
and Pelona schist detritus.
- Q_{ot}
OLDER TERRACE
Poorly consolidated gravels
composed of materials similar
to younger terrace material.
- T_{mc}
MINT CANYON FORMATION
Coarse arkosic sediments.
- T_{tc}
TICK CANYON FORMATION
Shales, siltstones, and
arkosic conglomerates.
- T_{va}
VASQUEZ FORMATION
Tribolite sandstones and
arkosic sandstones and
conglomerates; Trilobitic and
andesitic lava; Trilobitic
trilobite.
- Bc
BASEMENT COMPLEX
Metamorphic and igneous
intrusive granitic rocks.

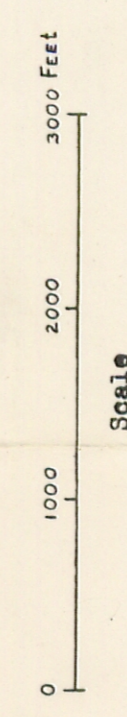
SYMBOLS

- CONTACT
(Location uncertain)
- U
D
FAULT
(Showing upthrown and
downthrown sides)
- FAULT
(Showing strike-slip
motion)
- FAULT
(Location uncertain)
- FAULT
(Location uncertain)
- AXIS OF ANTICLINE
(Showing plunge)
- AXIS OF SYNCLINE
(Showing plunge)
- STRIKE AND DIP
OF FOLIATION
- STRIKE AND DIP OF
BEDDING PLANE
(Inclined, vertical,
overturned)

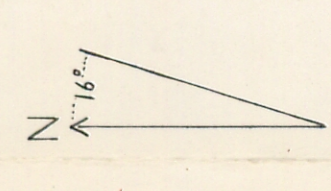
GEOLOGIC MAP OF
A PORTION OF
TICK CANYON AND
VICINITY

GEOLOGY BY J. H. BIRMAN 1949-1950

BASE MAP FROM U. S. GEOLOGICAL SURVEY TOPOGRAPHIC MAP



Contour Interval 25 feet



Mac Don