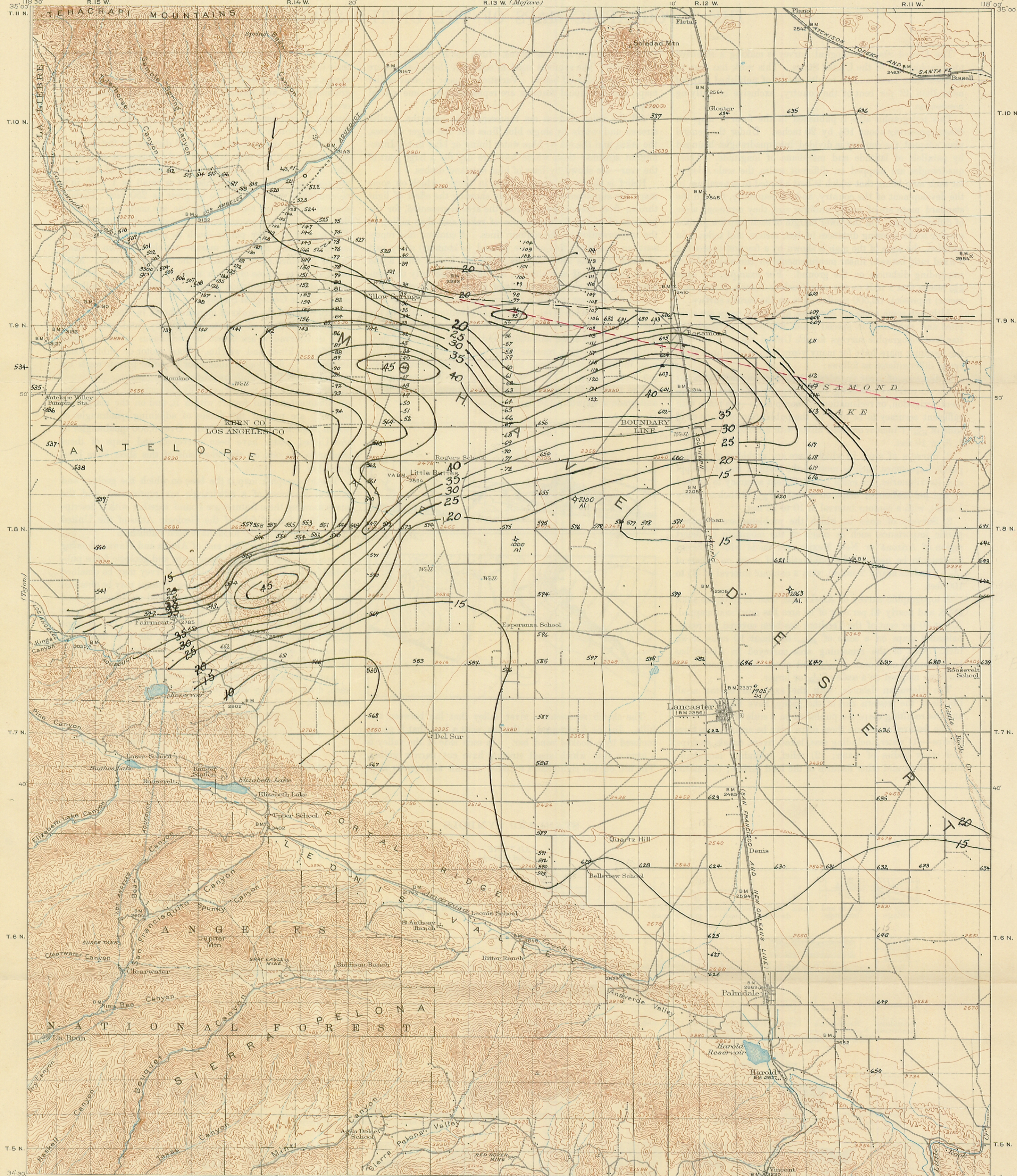


Borys - e - 1936 MS
BORYS, 1936 2044

DEPARTMENT OF THE INTERIOR
U.S. GEOLOGICAL SURVEY

CITY OF LOS ANGELES
BOARD OF PUBLIC SERVICE COMMISSIONERS

CALIFORNIA
ELIZABETH LAKE QUADRANGLE



R.B. Marshall, Chief Geographer.
Geo. R. Davis, Geographer in charge.
Topography by D.L. Reaburn, C.P. McKinley, N.E. Ballmer,
and J.W. Muller.
Control by C.F. Urquhart, L.F. Biggs, C.H. Semper,
and H.S. Crowe.
Surveyed in 1915.

Mck	B
R	Muller

Scale 1:25000
1 1/2 0 1 2 3 4 5 Miles
1 1/2 0 1 2 3 4 5 Kilometers
Contour interval 100 feet.
Datum is mean sea level.

APPROXIMATE MEAN
DECLINATION 1915.

Edition of 1917, reprinted 1932.
Polyconic projection, North American datum

ELIZABETH LAKE CALIF.

SURVEYED IN COOPERATION WITH THE CITY OF LOS ANGELES.