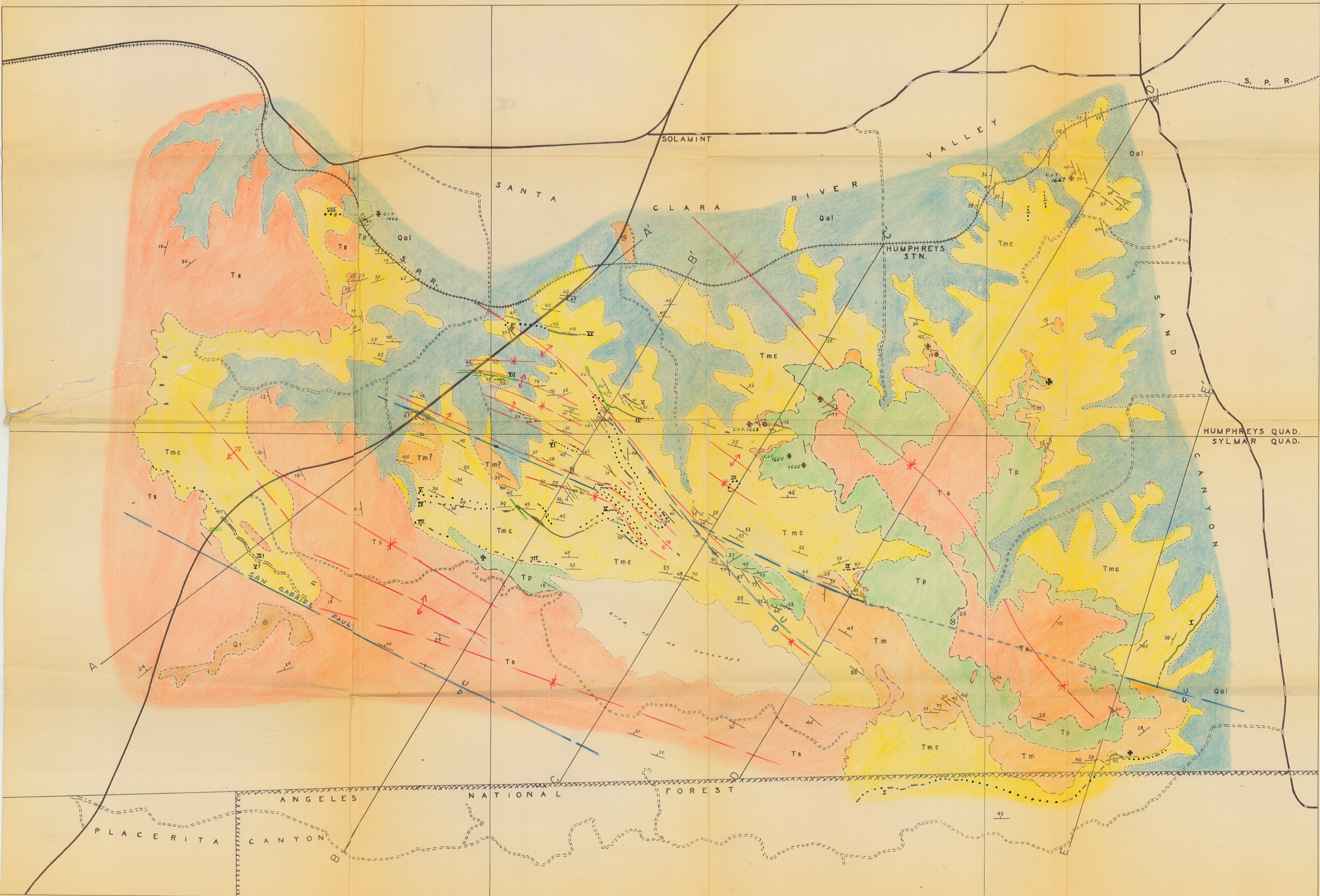


MacNeill - rj - 1947

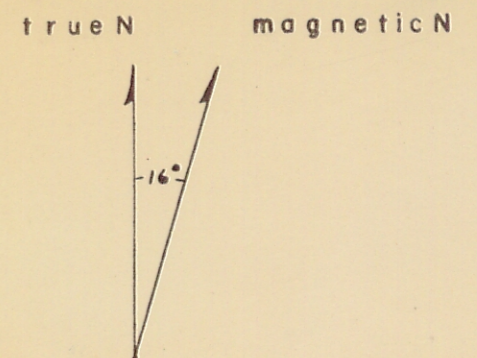
# GEOLOGIC MAP OF HUMPHREYS STATION AREA S. CALIFORNIA



## EXPLANATION

- |            |             |     |                       |
|------------|-------------|-----|-----------------------|
| QUATERNARY | RECENT      | Qal | ALLUVIUM              |
|            | PLEISTOCENE | Qt  | TERRACE DEPOSITS      |
| TERTIARY   | PLIOCENE    | Ts  | SAUGUS FORMATION      |
|            |             | Tp  | PICO FORMATION        |
|            | MIOCENE     | Tm  | MODELO FORMATION      |
|            |             | Tmc | MINT CANYON FORMATION |

- TUFF BEDS
- CONTACTS observed (dashed), assumed (dotted)
- ALLUVIAL BOUNDARIES
- ANTICLINES
- SYNCLINES
- FAULTS
  - major
  - minor
  - buried
- FOSSIL LOCALITIES
  - vertebrate
  - invertebrate
- BEDDING
  - inclined
  - horizontal
  - vertical
  - overturned



R J MacNeill 1947

