

SEDIMENTARY ROCKS

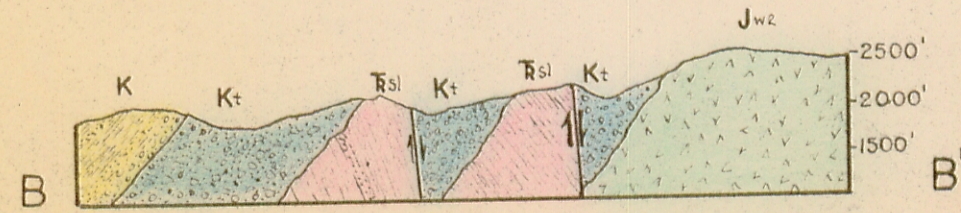
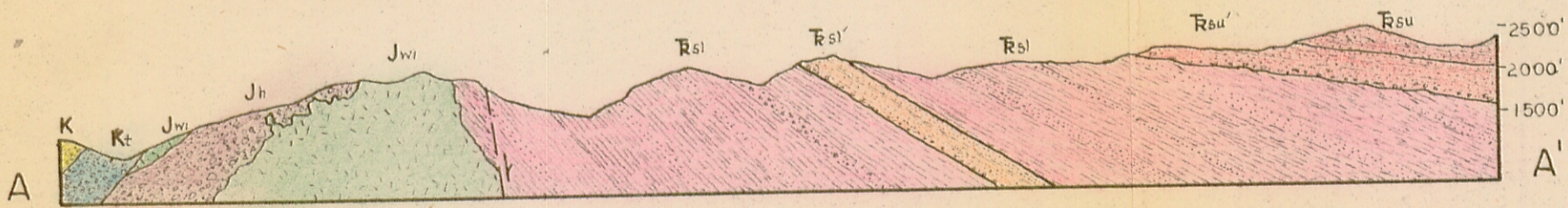
- CRETACEOUS
 - K Undifferentiated
 - Kt Trabuco formation
 - JURASSIC
 - Jh Hough formation
 - TRIASSIC
 - Rsu upper member
 - Rsl lower member
- } Santa Ana formation

IGNEOUS ROCKS

- Jg Glen Ivy Diabase
 - Jws rhyolite
 - Jw2 dacite
 - Jw2 andesite
- } Williams series

GEOLOGY BY

R. F. MOORE, 1948

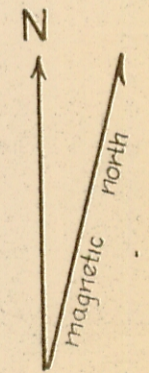


IN SECTIONS THE
HORIZONTAL & VERTICAL
SCALES ARE EQUAL

SCALE 1" = 1980'

CONTOUR INTERVAL 250 FEET

TOPOGRAPHY BY 29TH ENGINEERS, 1942



GEOLOGICAL MAP OF A PART OF THE SANTA ANA MOUNTAINS