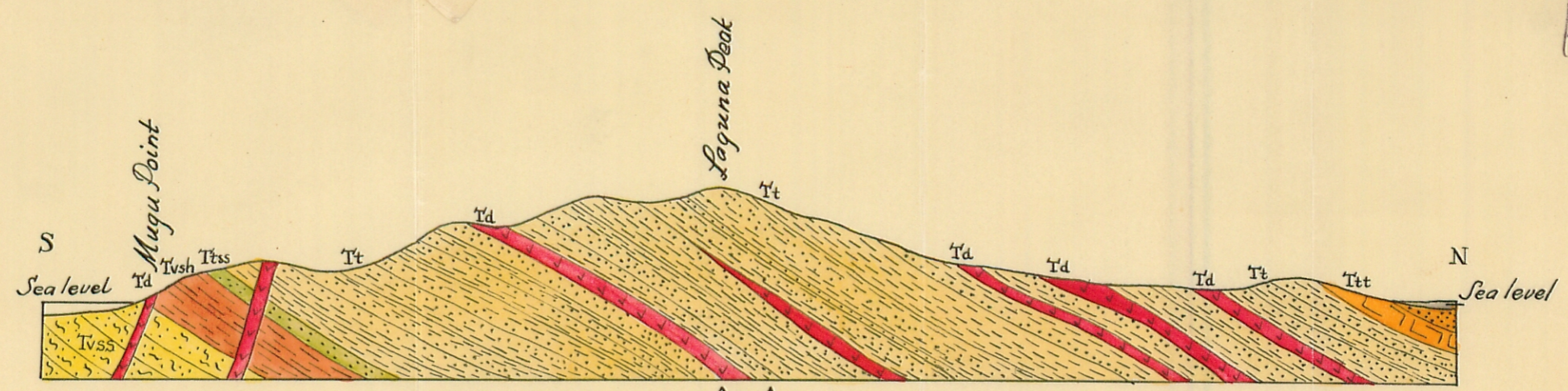
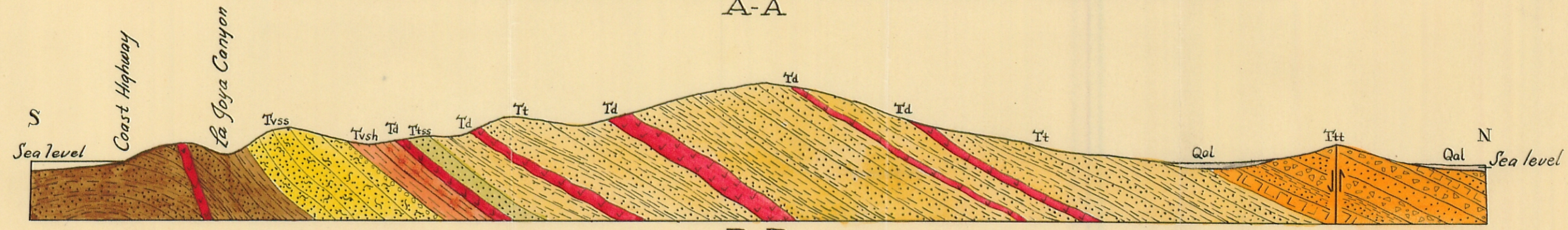


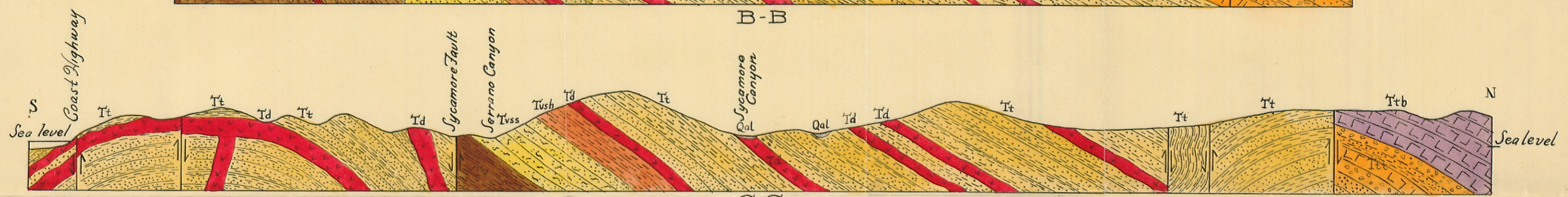
Kelley - VC - 1932
MS
GEOLOGY LIBRARY
California Institute of Technology



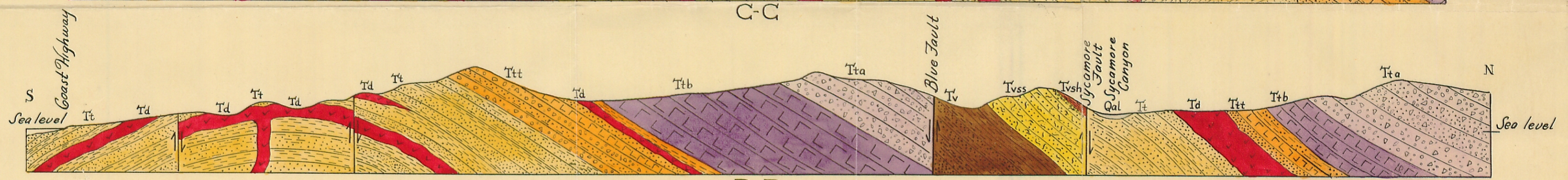
A-A



B-B



C-C



D-D

GEOLOGIC SECTIONS ACROSS THE WESTERN END OF THE SANTA MONICA MOUNTAINS

HORIZONTAL AND VERTICAL

SCALE 1 : 24000

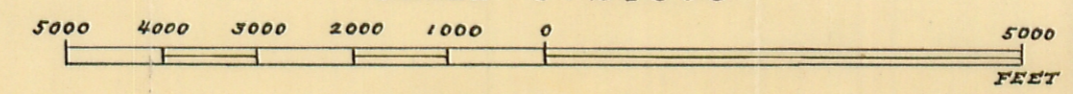


PLATE II

Drawn by V. C. Kelley
CALIFORNIA INSTITUTE OF TECHNOLOGY
PASADENA, CALIFORNIA

Explanation: Qal, Alluvium. Qpt, Alluvial stream, plain, and marine terraces. Tta, Boney Mountain agglomerate. Ttb, Serrano Basalt. Ttt, Sedimentary Volcanic transition zone. Tt, Temblor sandstone and shale. Ttss, Temblor massive sandstone member. Tvsh, Vaqueros black shale. Tvss, Vaqueros calcareous and fossiliferous sandstone. Tv, Vaqueros sandstone and shale. Td Diabase sills and basaltic dikes.