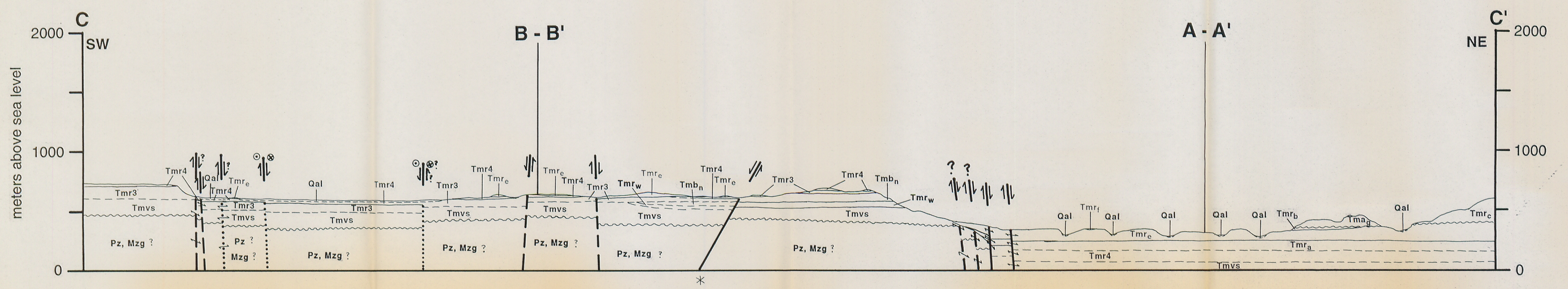
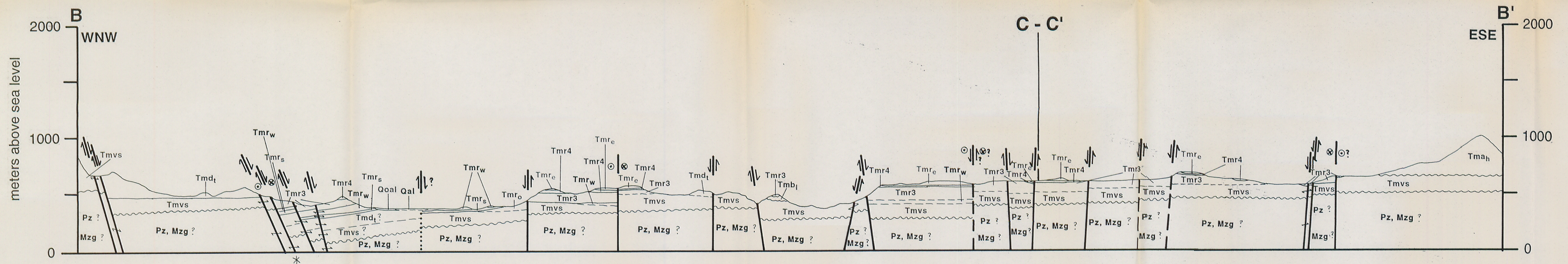
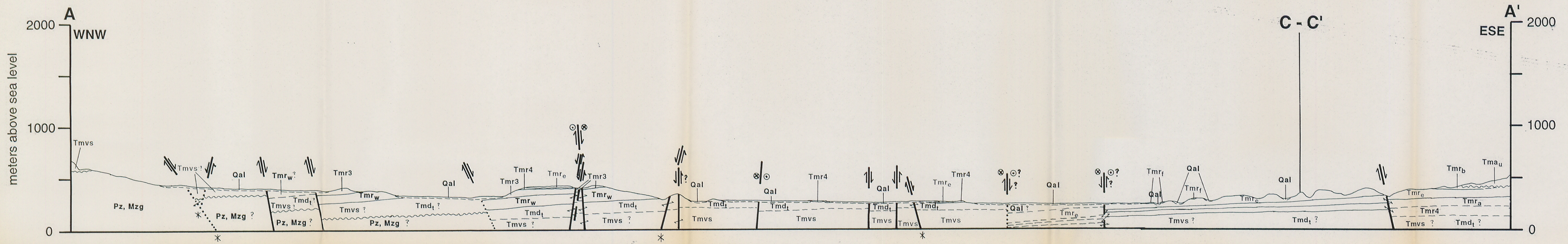


Cross-sections to accompany  
**Geologic Map of northern  
 Sierra Santa Isabel, Baja  
 California, Mexico**

Elizabeth A. Nagy  
 1997



QUATERNARY			
Ql	Playa deposits	Qal	Young alluvium
Qoal	Older alluvium		
Tmr <sub>e</sub>	Picacho Canelo rhyolite	Tma <sub>h</sub>	Los Hemo andesite
Tma <sub>g</sub>	Los Gemelos andesite	Tma <sub>u</sub>	Ugly Mountain andesite
Tmr <sub>f</sub>	Flagpole tuff		
Tmr <sub>b</sub>	Bighorn Sheep Tuff		
Tmr <sub>e</sub>	Tuff of El Canelo		
Tmr <sub>a</sub>	Arroyo Oculito Tuff		
Tmr <sub>4</sub>	Rhyolite (ash-flow tuff) #4		
Tmr <sub>3</sub>	Rhyolite (ash-flow tuff) #3		
Tmb <sub>n</sub>	New Year's Mountain basalt		
Tmr <sub>w</sub>	Tuffs of Santa Isabel Wash		
Tma <sub>t</sub>	Pico del Toro andesite		
Tmr <sub>s</sub>	Tuff of San Felipe		
Tmd <sub>t</sub>	Tombstone dacite		
Tmb <sub>l</sub>	Land of the Lost basalt		
Tmb <sub>k</sub>	Klondike Canyon basalt		
Tmr <sub>o</sub>	Biotite Tuff		
Tmvs	Volcaniclastic sedimentary rocks		
TERTIARY			
Miocene			
Mzg	Granitic rocks		
Pz	Metasedimentary rocks		

**SYMBOLS**

**CONTACTS (DEPOSITIONAL AND INTRUSIVE)**  
 definite; approximate; unconformable

**FAULTS**  
 definite; approximate; concealed below alluvium

**OTHER SYMBOLS**

connector of two outcrops of the same lithology, when one outcrop is too small to be labelled individually on the map

dip of faults drawn approximately vertical unless otherwise constrained  
 (\*) under the fault plane indicates well - constrained dip

