

PLATE I  
 GEOLOGIC MAP  
 OF THE EASTERN PORTION OF THE  
**JURUPA MOUNTAINS CALIF**  
 EXPLANATION

QUATERNARY ALLUVIUM  
 UNDIFFERENTIATED DUNE SANDS  
 RIVER GRAVELS & FAN DEPOSITS  
 QAL

INTRUSIVE ROCKS  
 PRE-CRETACEOUS

PEGMATITE DIKES  
 QM

QTZ. MONZONITE PORPHORY  
 GD+++

GRANO-DIORITE  
 HD

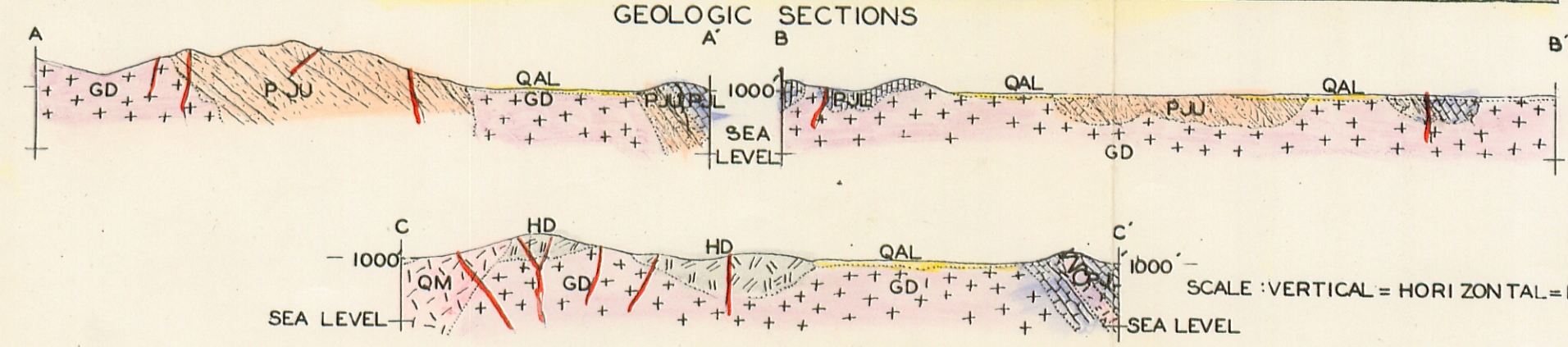
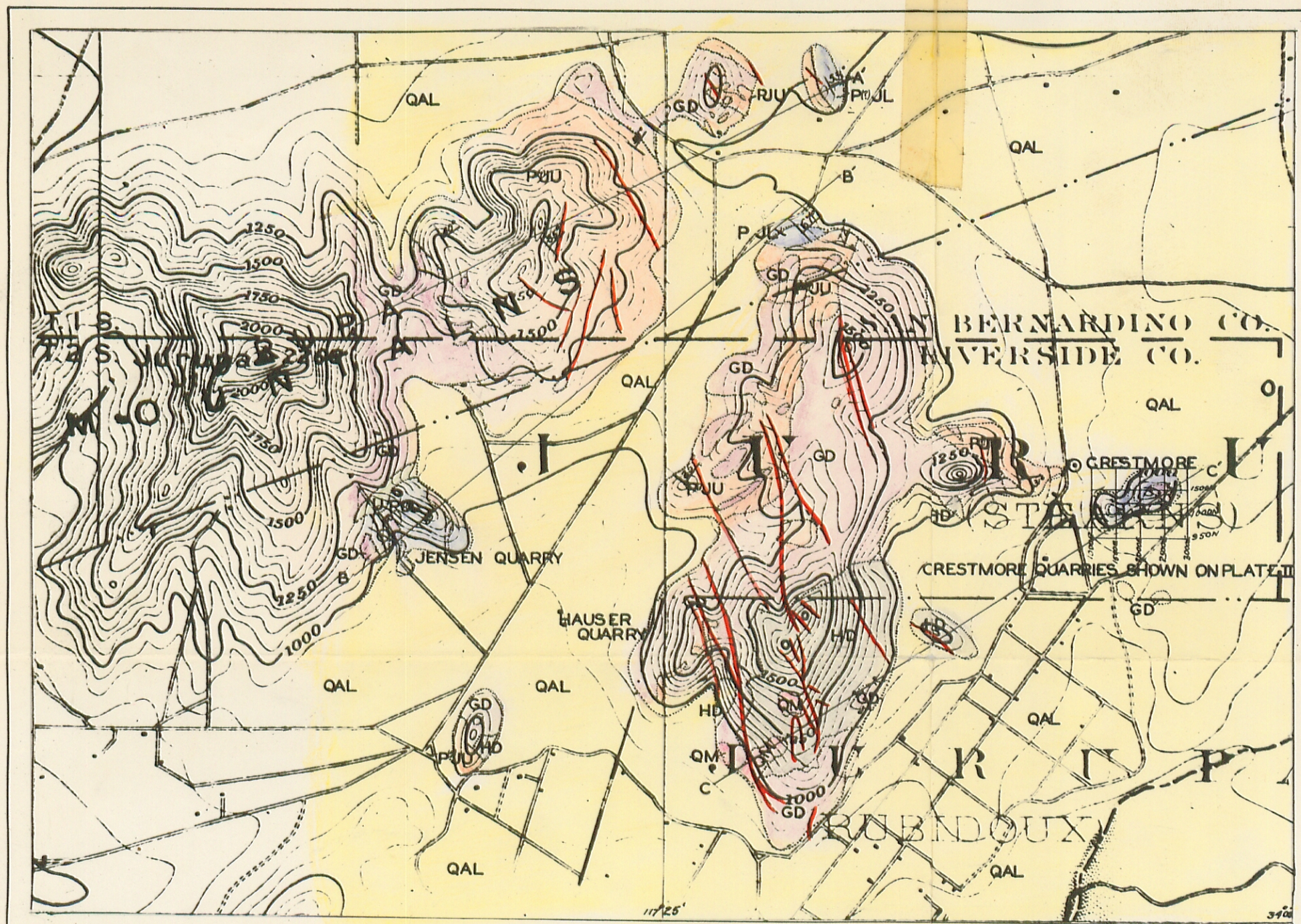
HYPERSTHENE QUARTZ DIORITE

METAMORPHIC ROCKS  
 JURUPA SERIES - PALEOZOIC (?)

PJUL  
 LIMESTONES

PJU  
 UNDIFFERENTIATED QUARTZITE GNEISS & SCHIST

U  
 UNDIFFERENTIATED GRANO-DIORITE & LIMESTONE



CONTACT CERTAIN DOUBTFUL  
 DIP AND STRIKE STRIKE OF VERTICAL BED  
 SCALE 1:31250 DATUM-MEAN SEA LEVEL  
 JUNE 1930 GEOLOGY BY J.W. DALY

SCALE: VERTICAL = HORIZONTAL = 1:31250