

CHARACTERS USEFUL IN DETERMINING THE POSITION OF INDIVIDUAL TEETH
IN THE PERMANENT CHEEK-TOOTH SERIES OF MERYCHIPPINE HORSES.

Francis D. Bode

In partial fulfillment of the requirements for the degree
of Master of Science at the California Institute of Technology

Pasadena, California

1931

**Characters Useful in Determining
the Position of Individual Teeth
in the Permanent Cheek-Tooth
Series of Merychippine Horses**

FRANCIS D. BODE

Reprinted from *JOURNAL OF MAMMALOGY*, Vol. 12, No. 2,
May, 1931

CHARACTERS USEFUL IN DETERMINING THE POSITION
OF INDIVIDUAL TEETH IN THE PERMANENT CHEEK-
TOOTH SERIES OF MERYCHIPPINE HORSES

BY FRANCIS D. BODE

INTRODUCTION

Cheek-teeth of fossil horses display structural characters which have long been recognized as of considerable value in establishing the relationships of these forms and in furnishing suggestions as to the age of the deposits in which the fossils occur. In later Cenozoic formations of western North America where complete skulls and skeletal materials are not always available, identification of members of the Equidae is often based on single teeth.

In the study of an individual hypsodont equine tooth difficulty is frequently encountered in determining with certainty its position in the cheek-tooth series. Variation in the enamel pattern as exhibited by the molars and premolars makes it particularly desirable to know where an individual tooth belongs in the series.

The problem of identifying teeth when detached from jaws arose in the study of a large number of merychippine teeth secured by the California Institute in the *Merychippus* Zone of the north Coalinga region, California. The collections from this Miocene horizon include approximately two thousand separate horse teeth, representing principally the species *Merychippus californicus* Merriam. While characters which assist in determining the position of a tooth apply particularly to this species, the criteria on which identification is made are applicable to individual teeth in a number of generic types of horses from the later Cenozoic.

The problem was suggested by Dr. Chester Stock under whose supervision it was investigated. The writer wishes to express his thanks to Dr. Stock for his kindly guidance during the course of the study. The illustrations have been prepared by Mr. John L. Ridgway.

CHARACTERS AND DEFINITIONS

The position of a tooth in the maxillary or ramus and the angle which its vertical axis makes with the plane of the occlusal surface of the series governs in large measure the attitude of the surface of wear as seen in external view. As is shown in figure 1, the plane of the occlusal surface truncates the crown of each tooth in the series at a slightly

different angle. These angles rarely vary beyond certain characteristic limits. Consequently they furnish a reliable means by which the position of individual permanent cheek-teeth in practically all of the later Tertiary horses can be definitely established.

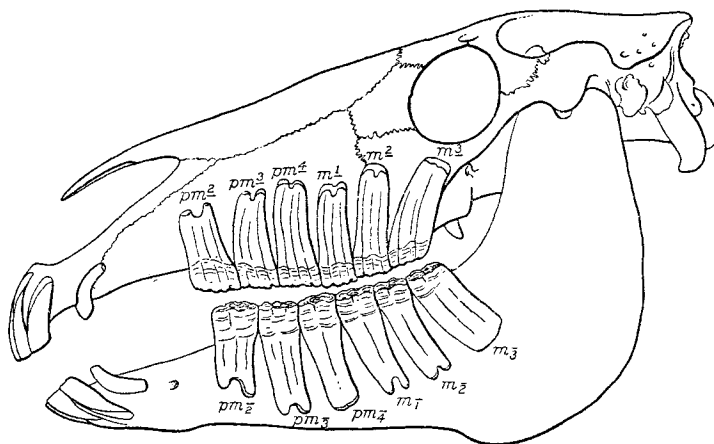


FIG. 1. Lateral view of skull and jaw of modern horse (*Equus caballus* Linnaeus) showing position of cheek teeth in maxillary and ramus, and characteristic angles at which plane of occlusal surface truncates crown of each tooth.

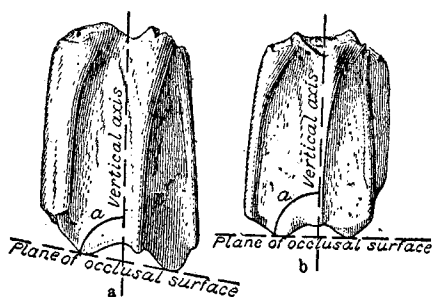


FIG. 2. Lateral views of cheek-teeth of *Merychippus californicus* Merriam showing position of vertical axis, plane of occlusal surface, and angle of slope (a). Fig. 2a, P⁴; fig. 2b, M¹.

In the superior cheek-tooth series the premolars are differentiated from the molars by the relative breadth of the parastyle when compared with the mesostyle (fig. 3). The parastyle of a premolar tooth is noticeably broader than the mesostyle. In a molar tooth these two styles are

subequal in size. This character is of general application. A broad parastyle is indicative of a premolar tooth in practically all of the genera of horses with hypsodont teeth.

The vertical axis of the crown is an imaginary line passing through the center of the occlusal surface and the center of the base of the crown (fig. 2). The slope of the occlusal surface refers to the downward slant of this surface, in either direction, when the tooth is held in a vertical position. A superior cheek-tooth is held with its occlusal surface

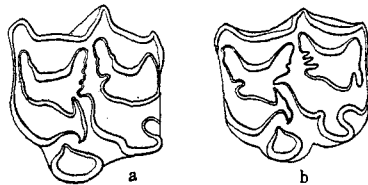


FIG. 3. Occlusal views of superior premolars of *Merychippus californicus* Merriam showing breadth of parastyle when compared to mesostyle. Fig. 3a, P³; fig. 3b, P⁴.

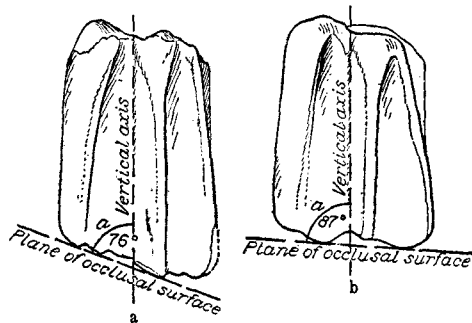


FIG. 4. Lateral views of superior premolars of *Merychippus californicus* Merriam showing difference in angle of slope in P³ (fig. 4a) and P⁴ (fig. 4b).

facing downward, and an inferior tooth with its occlusal surface facing upward. The angle of slope of the occlusal surface is the anterior angle between the occlusal surface and the vertical axis of the crown (fig. 2). The angle of slope can not be determined in an unworn tooth.

The anteroposterior-transverse ratio is obtained by dividing the anteroposterior diameter of the occlusal surface by the transverse diameter.

SYSTEM OF MEASUREMENTS

All measurements are made exclusive of cement. Whenever possible the system of measurements suggested by J. C. Merriam¹ is used. In both the upper and lower cheek-teeth the angle of slope is measured by a goniometer so constructed that the base of the instrument can rest upon the entire occlusal surface. The anterior angle between the plane of the occlusal surface and a vertical line along the center of the external side of the tooth is the angle of slope (fig. 2). This vertical line corresponds to the external projection of the vertical axis and does

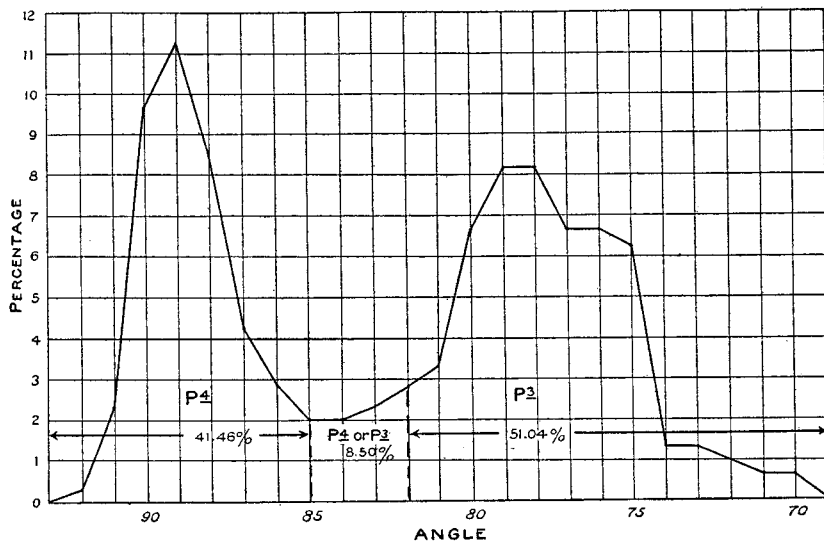


FIG. 5. Graphic representation of the frequency of occurrence of specific angles of slope in P³ and P⁴.

not usually coincide with the column of the mesostyle. Erroneous values are almost certain to be obtained if the attitude of this column influences the measurements.

In superior cheek-teeth the anteroposterior diameter is the distance across the occlusal surface from the middle of the faces of contact of the adjoining anterior and posterior teeth. This diameter does not include the anterior projection of the parastyle in advance of the principal contact plane of the tooth. The anteroposterior diameter in the

¹ Univ. Calif. Pub., Bull. Dept. Geol., vol. 7, no. 21, p. 409, 1913.

inferior cheek-teeth is measured from the middle of the contact plane of the anterior wall of the crown to the extreme posterior projection of the entostylid.

The transverse diameter of the upper cheek-teeth is measured from the deepest indentation of the paracone wall to the farthest lingual projection of the protocone. In the inferior series the transverse diameter is the greatest distance measured between the protoconid and the metaconid. With an unworn tooth the measurements are taken one-third of the distance from the summit to the base of the crown. When the enamel is covered with cement the diameters can not be ac-

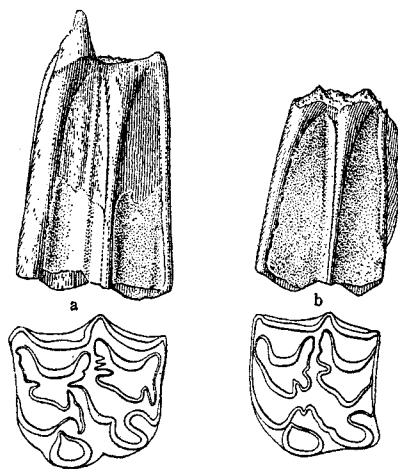


FIG. 6. Lateral and occlusal views of P^4 (fig. 6a) and M^1 (fig. 6b) of *Merychippus californicus* Merriam showing difference in breadth of parastyle.

curately measured. The data for each of these frequency curves were obtained from more than 200 teeth.

SUPERIOR CHEEK-TEETH

The outstanding characters exhibited by P^2 and M^3 afford a ready identification of these teeth. The great enlargement of the parastyle and the pointed anterior wall of the crown distinguish P^2 from all other teeth in the superior dentition. Likewise in M^3 the extreme backward curvature of the vertical axis from the plane of the occlusal surface, the indentation of the posterior wall, and the absence of a surface of attrition caused by wear of a more posterior tooth, permit an identification of the last molar without much difficulty.

The broad parastyle of the premolars, figure 3, furnishes a distinguishing feature for these teeth.² The distinctive breadth of the parastyle is shown not only on the occlusal surface but also on the outer side by the broadness of this style when compared to the column of the mesostyle. The angle of slope of the occlusal surface serves to separate P³ from P⁴ but is not of value in distinguishing P⁴ from M¹. This angle varies from 92° to approximately 70° in premolar teeth. The third

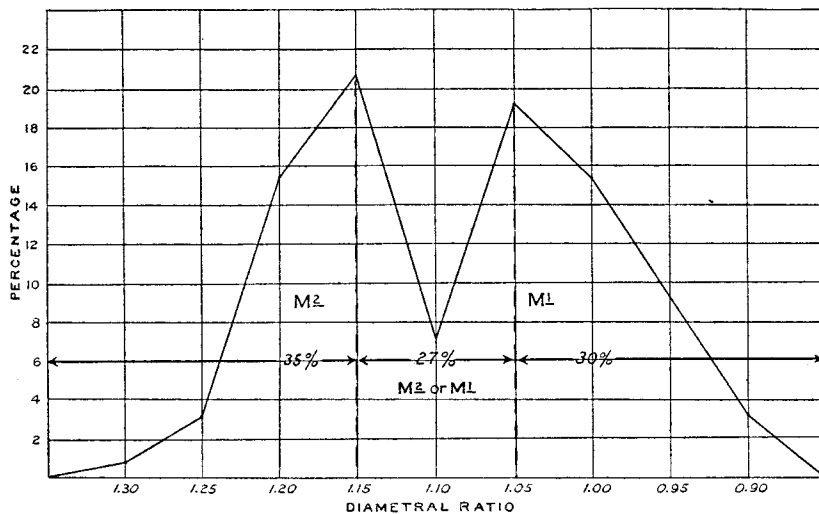


FIG. 7. Graphic representation of the frequency of occurrence of specific values of the anteroposterior-transverse ratio in M¹ and M².

premolar is characterized by an angle of slope of 82° or less. This angle has a range from 92° to 85° in fourth premolars. A tooth whose angle of slope lies between 85° and 82° can not be definitely placed in its correct position in the premolar series although it is probable that

² In the upper premolars the mesostyle also is usually more prominent than in the molars, especially in *Equus* and genera of the late Tertiary.

Difference in the position of the adjacent horns of the cement lakes, as observed in the molars and premolars, is also an aid in determining the allocation of isolated teeth in horses. In the molars the horns of these cement lakes are usually sub-equal. In the premolars the anterior horn of the posterior lake extends outward and forward well beyond the posterior horn of the anterior lake.

Still another determining factor is the fact that, in general, the upper premolars of horses have a relatively greater antero-posterior diameter than molars belonging in the same cheek tooth series.—J. W. Gidley.

it belongs to the fourth premolar position. The difference in slope is well illustrated by figure 4. Figure 4a shows a third premolar with an angle of slope of 76° , while the 87° angle shown in figure 4b is characteristic of the fourth premolar position. The differences can usually be recognized without the use of a goniometer. A graphical representation of the frequency of occurrence of specific angles of slope is shown in figure 5. The angles have been plotted on the abscissae and the percentages of teeth possessing a given angle are recorded on the ordinates. The presence of two well defined maxima on this curve demonstrates the practicability of this method of distinguishing P^3 from P^4 .

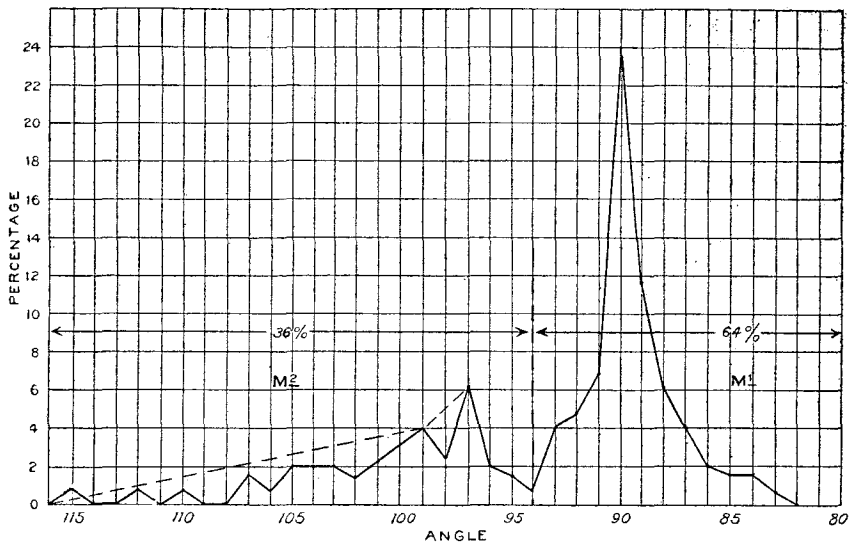


FIG. 8. Graphic representation of the frequency of occurrence of specific angles of slope in M^1 and M^2 .

M^1 and M^2 , though readily distinguished by their slenderness of parastyle from the premolars (figure 6), are sometimes difficult to set apart. Two characters, namely the anteroposterior-transverse ratio and the angle of slope of the occlusal surface are frequently diagnostic. The ratio of the anteroposterior and transverse diameters is not always a satisfactory character because this ratio approaches the same value for all molar teeth after more than one-half of the height of the crown has been removed by wear. However, if not more than one-third of the crown has been worn away this ratio may be used to advantage.

Figure 7 is a graphic representation of the frequency of occurrence of specific values of the anteroposterior-transverse ratio in M^1 and M^2 .

In plotting a curve, figure 8, showing the frequency of occurrence of specific angles of slope in M^1 and M^2 two maxima were obtained. According to the measurements the teeth fall into two groups, one of which (64 per cent) is distinctly larger than the other (36 per cent). Apparently some second molars have an angle of slope which approximates 90° . When, however, the angle between the plane of the occlusal surface and the vertical axis deviates in individual teeth from a right angle it is usually greater than 95° .

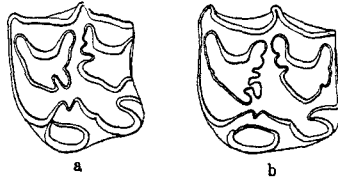


FIG. 9. Occlusal view of M^1 (fig. 9a) and M^2 (fig. 9b) of *Merychippus californicus* Merriam showing difference in anteroposterior diameters when compared to transverse diameters.

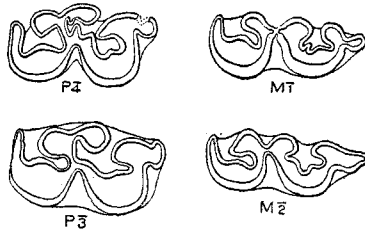


FIG. 10. Occlusal view of P_2 , P_3 , M_1 , and M_2 of *Merychippus californicus* Merriam showing anteroposterior compression of enamel pattern in premolars, and characteristic posterior projection of entostylid in molars.

In M^1 the anteroposterior and transverse diameters of the occlusal surface, figure 9a, are subequal and the diametral ratio has a value of 1.05 or less. The angle of slope of the occlusal surface approaches 90° . An angle of slope of less than 90° (89° to 85°) is always indicative of the first molar position. The occurrence of an angle of 90° is much more frequent in M^1 than in M^2 .

The occlusal surface of M^2 tends to be elongate in an anteroposterior direction (fig. 9b). The anteroposterior-transverse ratio has a value of 1.15 or greater. A value of 1.20 or more is probably always indicative

of the second molar position. If a tooth belonging to the first or second molar position possesses an angle of slope greater than 95° it can be definitely ascribed to M^2 .

A molar tooth more than one-third worn, with an anteroposterior-transverse ratio less than 1.15, and an angle of slope between 90° and 95° , can not be definitely placed in the series.

INFERIOR CHEEK-TEETH

As in the superior cheek-tooth series, P_2 and M_3 can be readily identified. The great enlargement of the parastylid and the pointed anterior

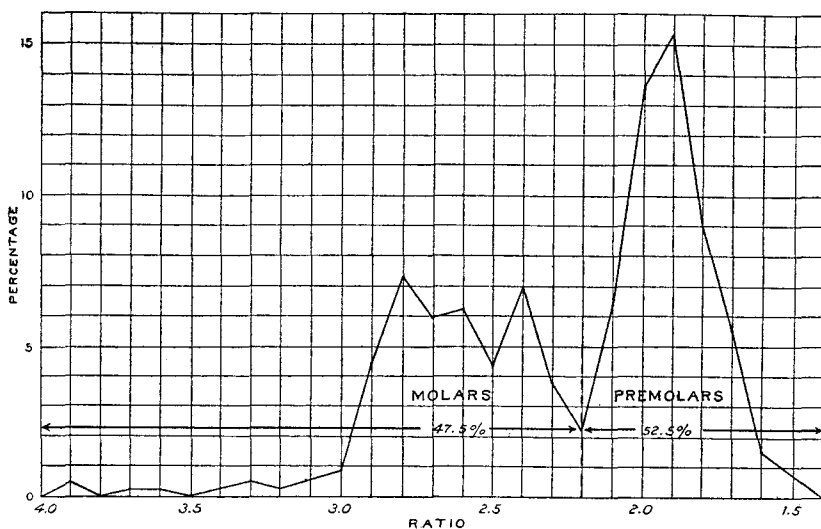


FIG. 11. Graphic representation of the frequency of occurrence of specific values of the anteroposterior-transverse ratio in inferior premolars and molars.

wall of the crown as viewed in cross-section are characters peculiar to P_2 alone. In M_3 the extreme backward curvature of the vertical axis from the plane of the occlusal surface, the presence of an entostylid column with anteroposterior diameter approximately equal to that of the protoconid or hypoconid, and the absence of a surface of attrition caused by wear of a more posterior tooth, distinguish this molar from all other teeth in the inferior dentition.

In merychippine forms the inferior premolars are distinguished from the molars by their more massive appearance (fig. 10). Moreover, the

enamel pattern of a premolar tooth exhibits a compression in an antero-posterior direction. The entostylid in premolar teeth is flattened against the posterior side of the entoconid and never shows the extreme pos-

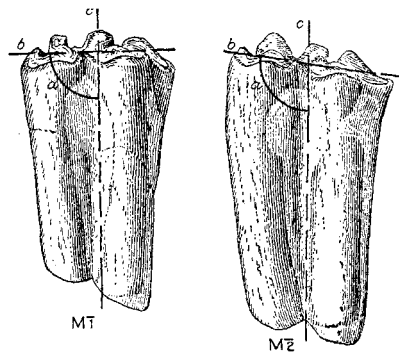


FIG. 12. Lateral view of inferior molars in *Merychippus californicus* Merriam showing differences in the angle of slope (a) in M_1 and M_2 , vertical axis (c), and plane of the occlusal surface (b).

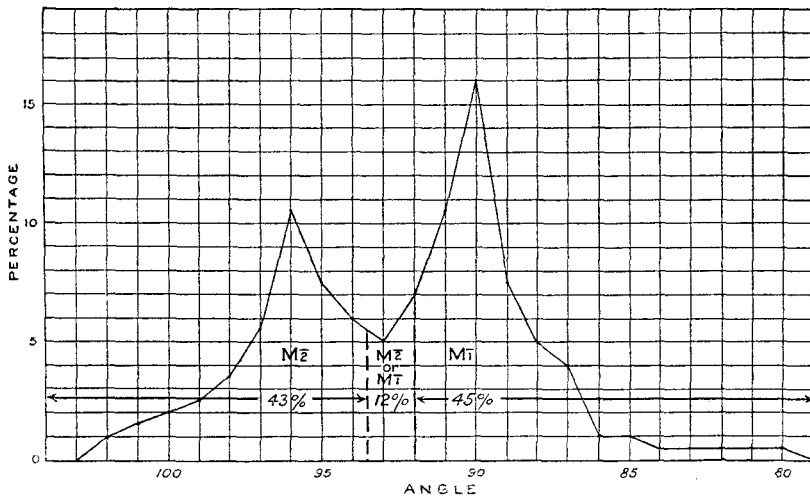


FIG. 13. Graphic representation of the frequency of occurrence of specific angles of slope in M_1 and M_2 .

terior projection seen in the molars (fig. 10). The significance of this compression in distinguishing premolars from molars is graphically expressed when the anteroposterior-transverse ratio is plotted (fig. 11).

The premolars have an anteroposterior-transverse ratio that varies between the limits 2.1 and approximately 1.5, while in the molars this ratio ranges from 2.3 to approximately 4.0. While a value of 2.3 or more is always indicative of a molar tooth, the ratio in molars varies with the degree of wear of the crown. A first or second molar that has had more than two-thirds of its crown removed by wear frequently has an anteroposterior-transverse ratio less than 2.1, and is therefore difficult to distinguish from a worn premolar.

In the entire collection of merychippine teeth from the Coalinga locality the greatest difficulty is experienced in attempting to distinguish P_3 from P_4 . The occurrence of angles of slope of less than 90° is probably more frequent in third premolars than in fourth premolars, but not to the extent needed in furnishing a definite clue as to identity. It is doubtful whether the characters which have been employed in establishing the identity of individual teeth are applicable to the third and fourth premolars. In this connection it should be noted that the great similarity which fortunately prevails between these teeth lessens somewhat the necessity of discriminating between the two positions.

The angle of slope of the occlusal surface serves to identify M_1 and M_2 (fig. 12). The curve showing the percentage of occurrence of the different angles in these teeth, figure 13, has two distinct maxima, one at 90° and the other at 96° . If the occlusal surface has an angle of slope of 91° or less the tooth may be assigned to the first molar position. Likewise an angle of slope of 95° or greater is indicative of the second molar position. A tooth in which the angle has a value lying between 94° and 91° can not be definitely determined as to position.

Summary of characters useful in determining the position of individual teeth

Superior cheek-teeth

TOOTH	PARASTYLE	ANGLE OF SLOPE	ANTEROPOSTERIOR- TRANSVERSE RATIO
P2	Parastyle greatly enlarged Crown wedge-shaped with apex anterior		
P3		82° or less	
P4	Broad	85° to 92°	
M1	Slender	85° to 91°	1.05 or less
M2	Slender	94° or greater	1.15 or greater
M3	Crown with extreme backward curvature Posterior wall of crown deeply indented Absence of surface of attrition on posterior wall		

Inferior cheek-teeth

TOOTH	ANGLE OF SLOPE	ANTEROPosterior- TRANSVERSE RATIO	ENTOSTYLID
P2	Parastyloid greatly enlarged Crown wedge-shaped with apex anterior	Less than 2.1	Compressed
P3			
P4	85° or 93°	Less than 2.1	Compressed
M1	91° or less	Greater than 2.3	Posterior projection marked
M2	94° or greater	Greater than 2.3	Posterior projection marked
M3	Entostylid column as large as protoconid and hypoconid Crown with extreme backward curvature Absence of surface of attrition on posterior wall		

California Institute of Technology, Pasadena, California.