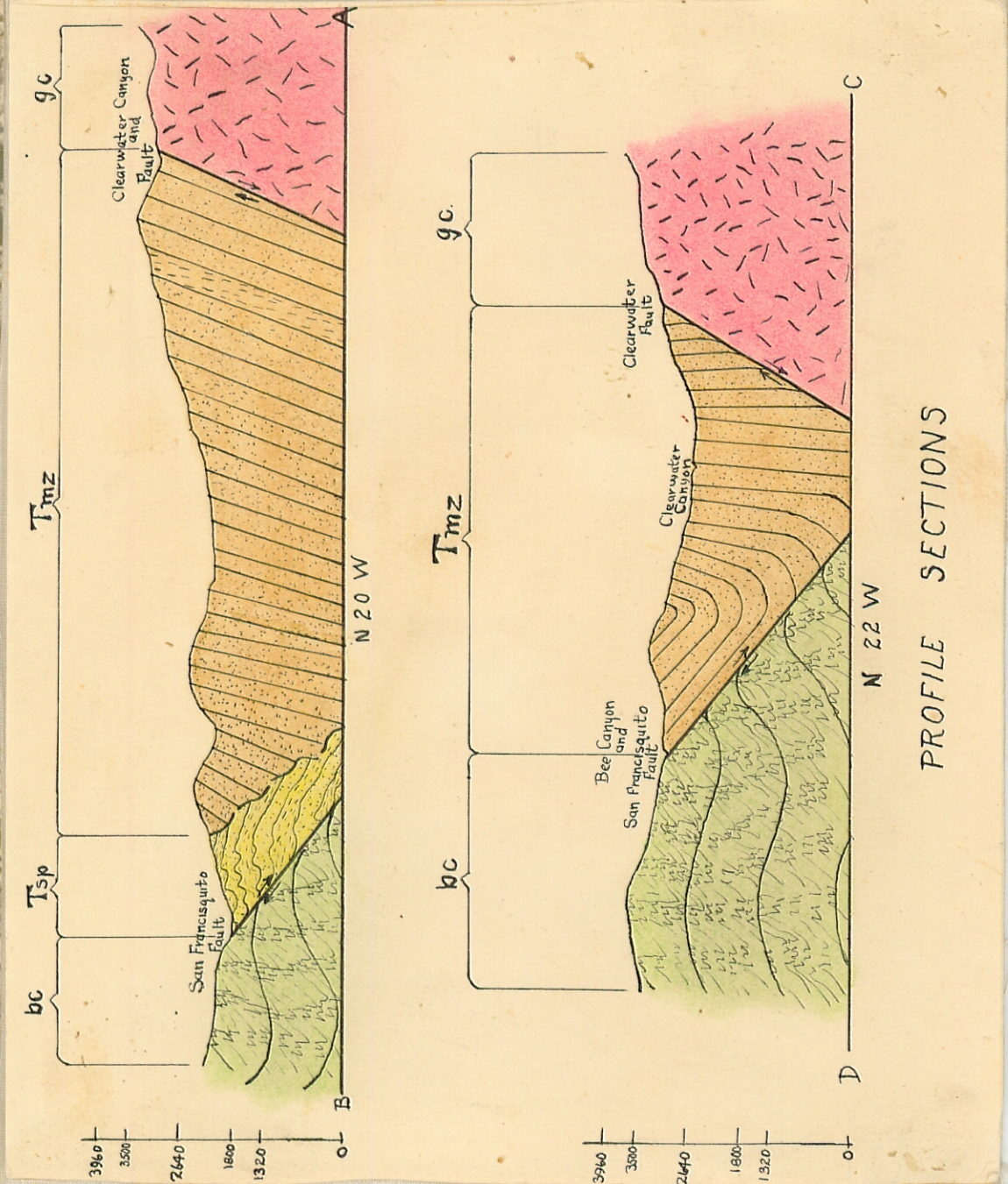
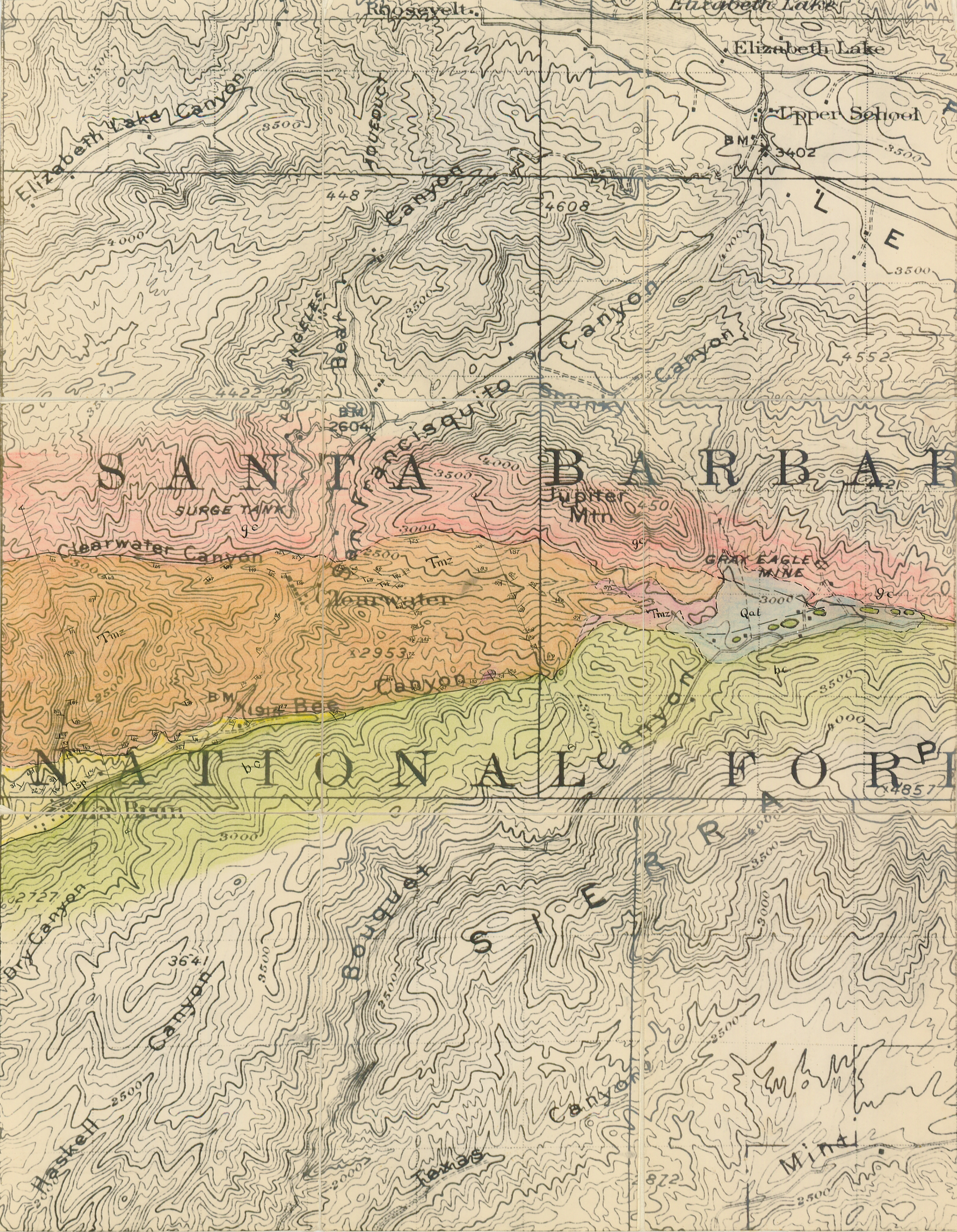


Nickell-fa-1928  
MS



### LEGEND

- Qal** Quaternary - ALLUVIUM  
(unconsolidated sands and soils as valley fill)
- Tsp** Oligocene (?) - SESPE formation  
(deep red, fine-grained sandstones and interbedded thin arenaceous shale strata.; non-marine)
- Tmz** Eocene - MARTINEZ (?) formation  
(cream-yellow arkosic sandstones with interbedded dark shales and thin beds of conglomerates; marine)
- gc** Jurassic (?) - GRANITIC COMPLEX  
(intrusive complex of granites, andesites and basic rocks)
- bc** Pre-Jurassic - BASEMENT COMPLEX  
(complex of micaceous shists, quartzites, paragneisses, intrusives.)

fault  
 contact

Geology by - F. A. Nickell  
 dip and strike  $\searrow^{12^\circ}$   
 Topography from U.S.G.S. - LAKE ELIZABETH sheet

0 1/4 1/2 1 1 1/2 2 miles  
 SCALE: 2 INCHES = 1 MILE