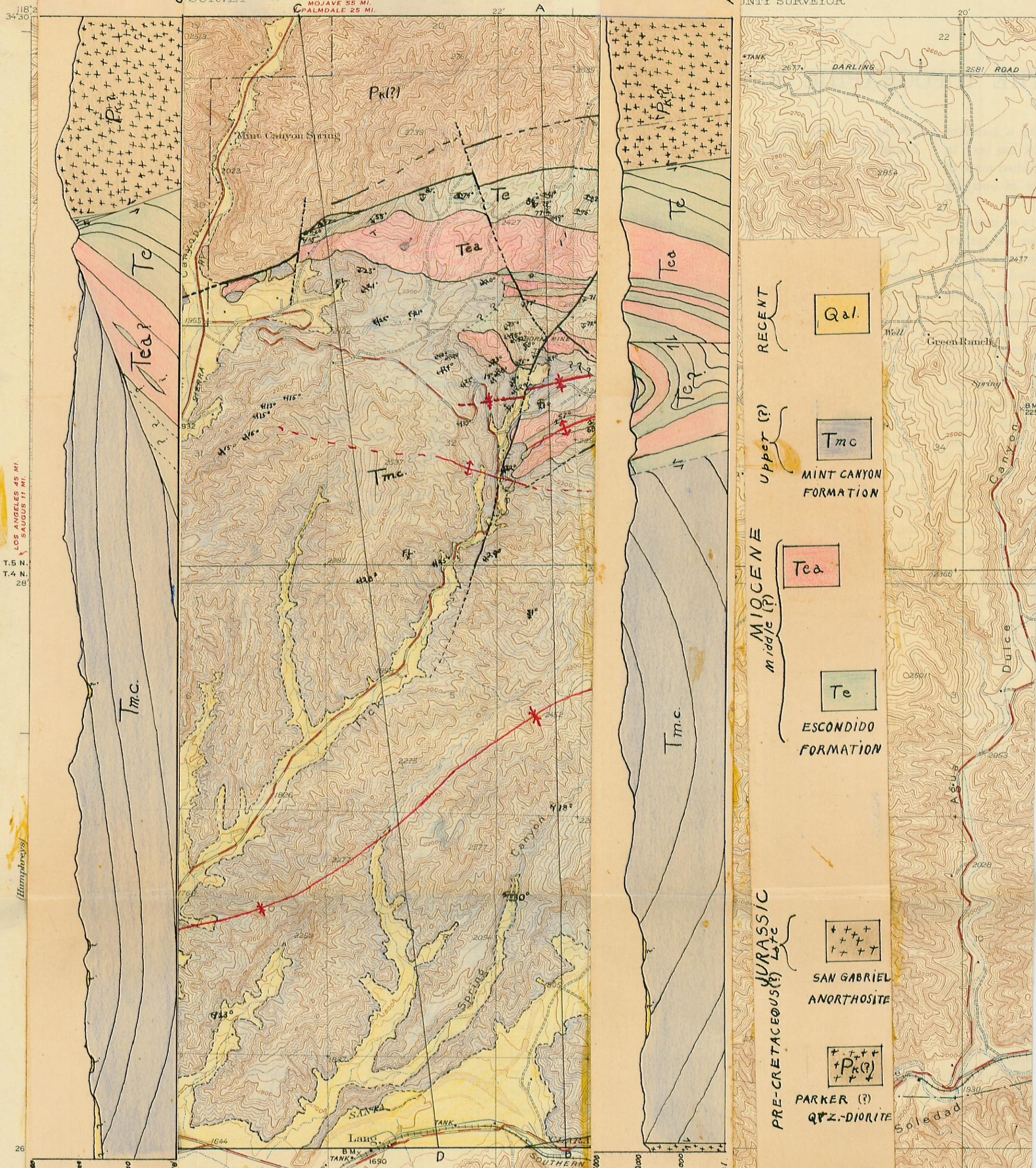


Smith - ct - 1938
BS

LOS ANGELES COUNTY, CALIFORNIA
BOARD OF SUPERVISORS
LARRY W. WRIGHT, CHAIRMAN
COUNTY SURVEYOR

DEPARTMENT OF THE INTERIOR
SURVEY



RECENT

Qal.

UPPER (?)

Tmc

MINT CANYON FORMATION

MIOCENE

Middle (?)

Tea

Te

ESCONDIDO FORMATION

JURASSIC

Late

PRE-CRETACEOUS (?)

San Gabriel Anorthosite

Parker (?)

Qtz-Diorite

Vertical Scale =
Horizontal Scale.
Scale = 1/24000

GEOLOGIC MAP of a PORTION
of
THE LANG QUADRANGLE
by
CLAY T. SMITH

FAULT ————— Fossil Locality - F.L.
CONTACT ————— CONCEALED CONTACT - - -
CONCEALED FAULT - - - -
AXIS of ANTICLINE ———+———
AXIS of SYNCLINE ———+———

Vertical Scale =
Horizontal Scale
Scale = 1/24000

118°24'R. 15 W. R. 14 W.
Topography by C.P. McKinley
Control by U.S. Geological Survey and
U.S. Coast and Geodetic Survey
Surveyed in 1929

TRUE NORTH
MAGNETIC NORTH
APPROXIMATE MEAN
DECLINATION, 1929

Scale 1/24000
1 1/2 0 1 Mile
5000 4000 3000 2000 1000 0 5000 Feet

Contour interval 25 feet
Datum is mean sea level