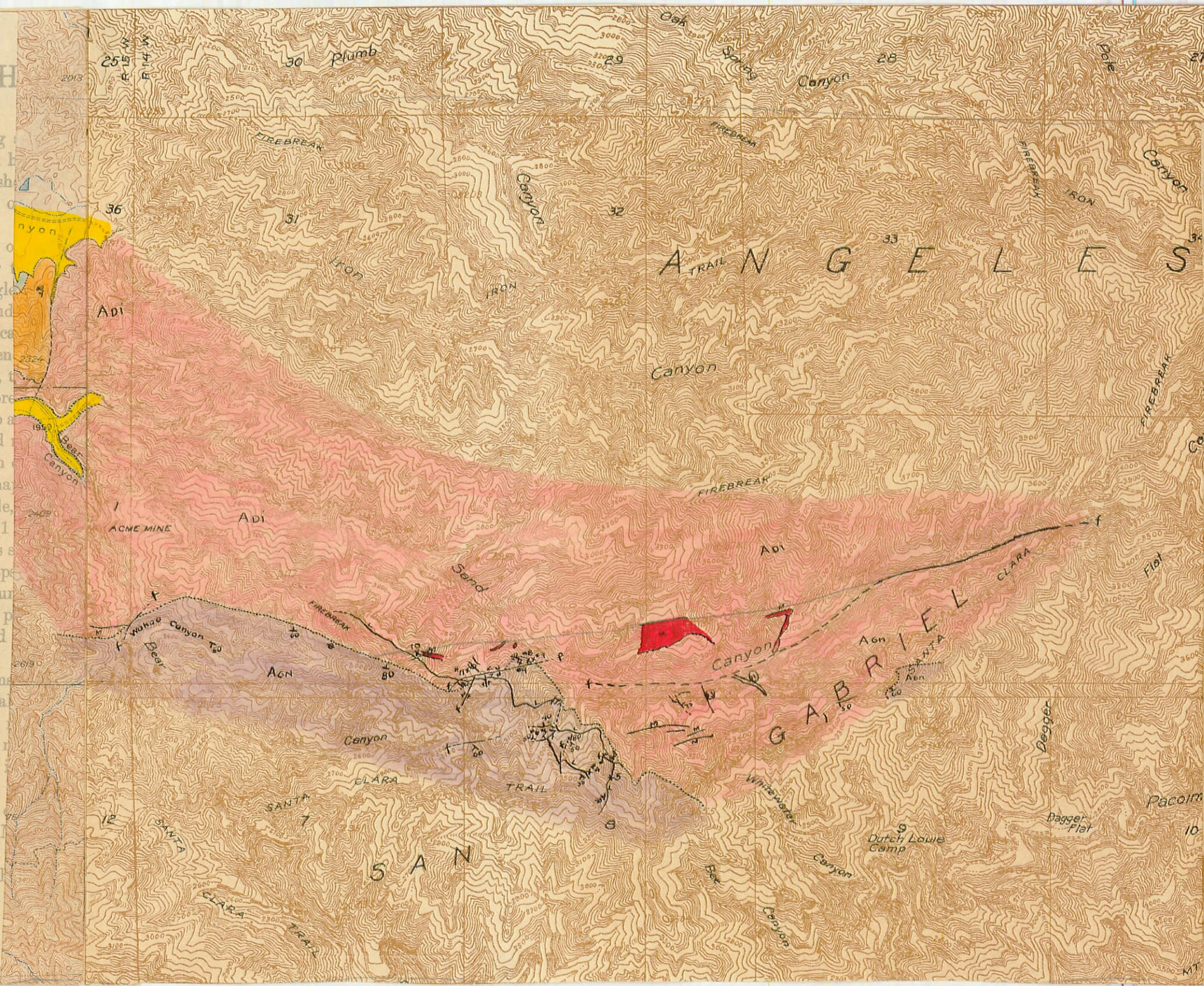


Carr, 1938
Carr-15-1938
BS

ological Survey is making
United States. This work
its results consist of publish
of the country, exclusive
is published in the form of
6 1/2 by 20 inches. Under
is divided into quadrangle
and meridians of longitud
on different scales, the sc
which is best adapted to gen
country, and consequently, t
rly uniform size, they repr
lower margin of each map a
stances in feet, meters, and
map is shown by a fraction
ar measurements on the ma
the ground. For example,
the map (such as 1 inch, 1
similar units on the earth's s
re surveyed and some maps
special scales for special pur
veys for the United States p
or many years been divided
lows:
which there are problem
ng, for example, to mineral
ation of swamp areas—are
used in the publication of
half mile), with a contour
which there are problems
s most of the basin of the
de with sufficient accuracy
ps on a scale of 1/62,500 (1 inch
terval of 10 to 25 feet.
which the problems are
as much of the mountain
w Mexico, are made with
ne publication of



GEOLOGY OF SAND CANYON

Scale - 1:24,000
Contour Interval - 25'
Datum is mean sea level

Topography by U.S.G.S. Geology by R.B.Carr.

LEGEND

- | | | | | |
|--------------|------|-----------------|--|------------------|
| Quaternary | QAI | Recent Alluvium | | Contact |
| | QOAI | Old Alluvium | | Fault |
| Miocene | TMC | Mint Canyon | | Lamprophyre Dike |
| | | | | Ore Bodies |
| | | | | Station |
| Pre-Cambrian | | | | Rock Specimen |
| | | | | Dip and Strike |
| | Aoi | Dioritic Phase | | |
| | Agn | Gneiss | | |