

PLATE I

TOPOGRAPHIC MAP
RED ROCK CANYON

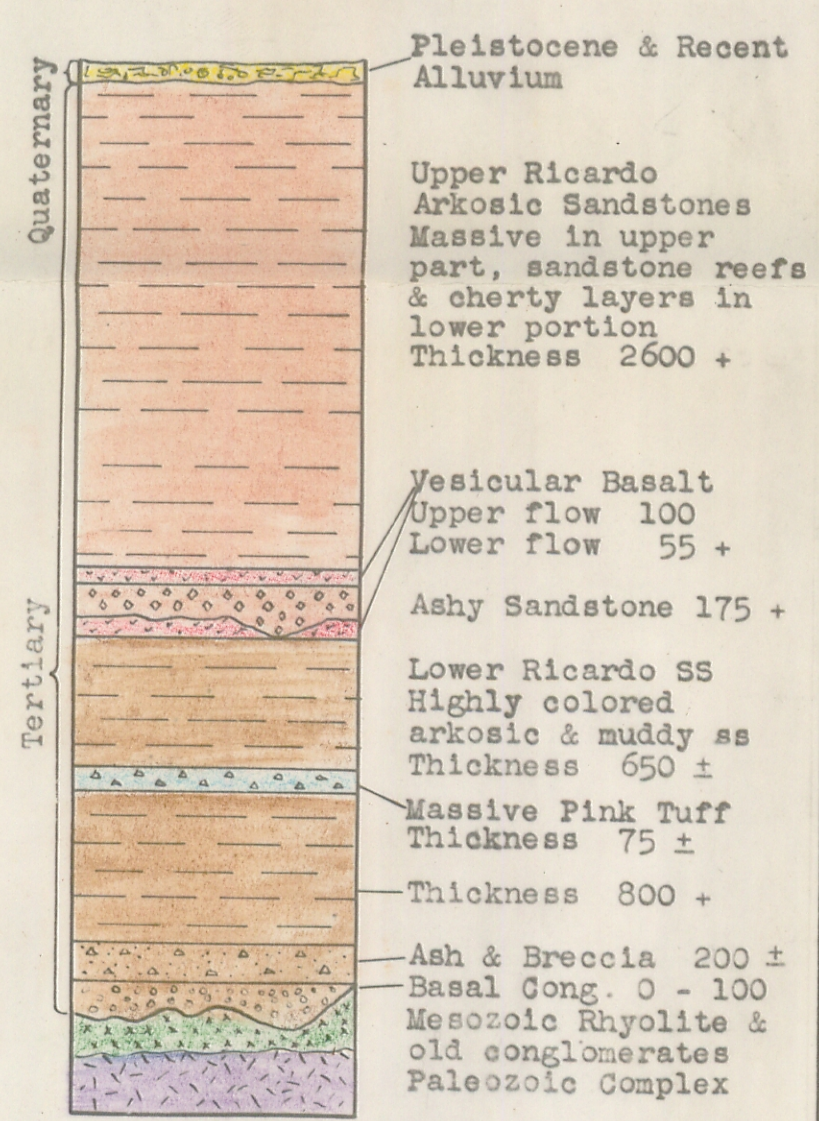
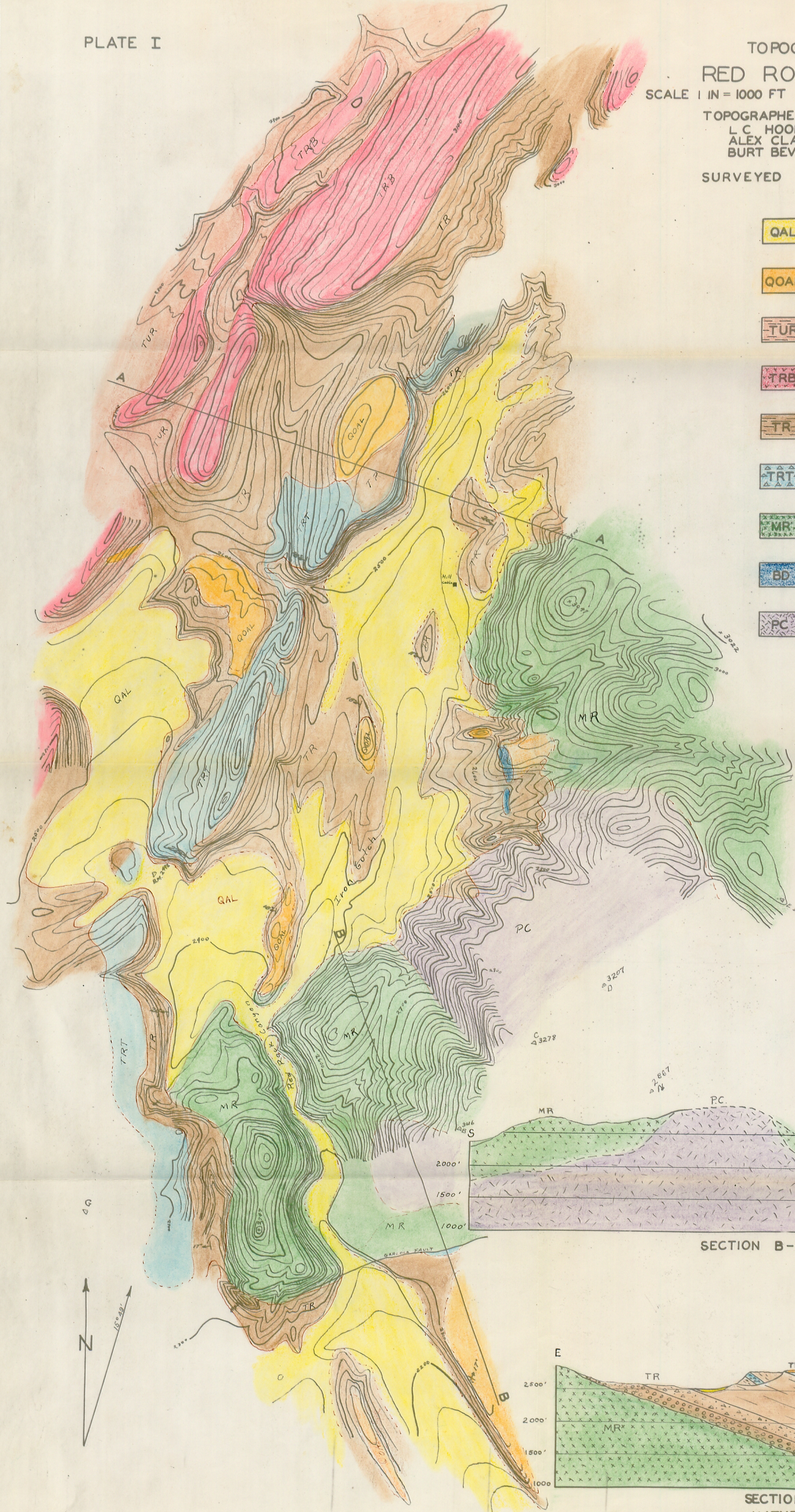
SCALE 1 IN = 1000 FT CONTOUR INTERVAL 25 FT

TOPOGRAPHERS
L C HOOKWAY
ALEX CLARK
BURT BEVERLY JR

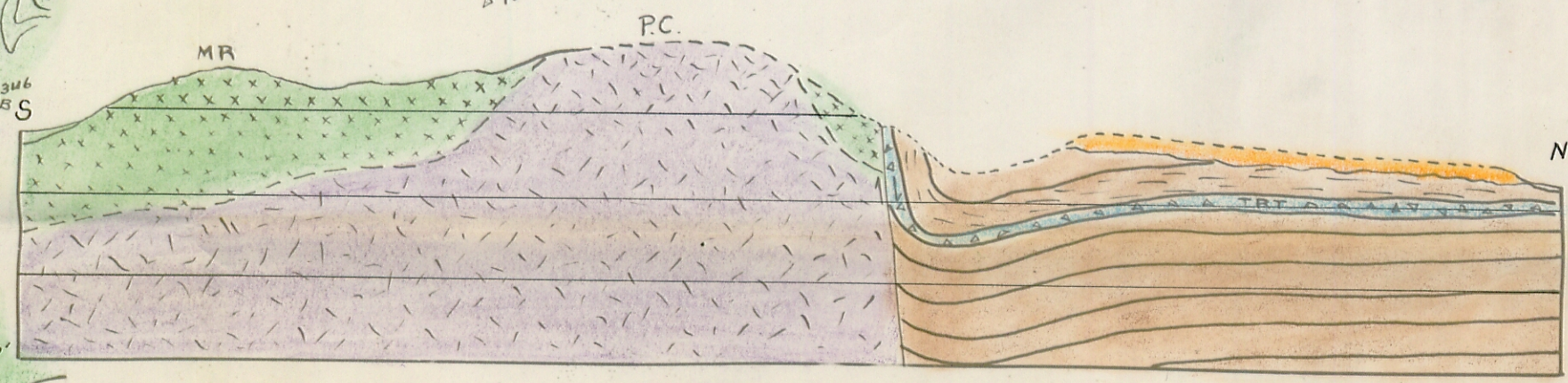
SURVEYED - JUNE 1928

LEGEND

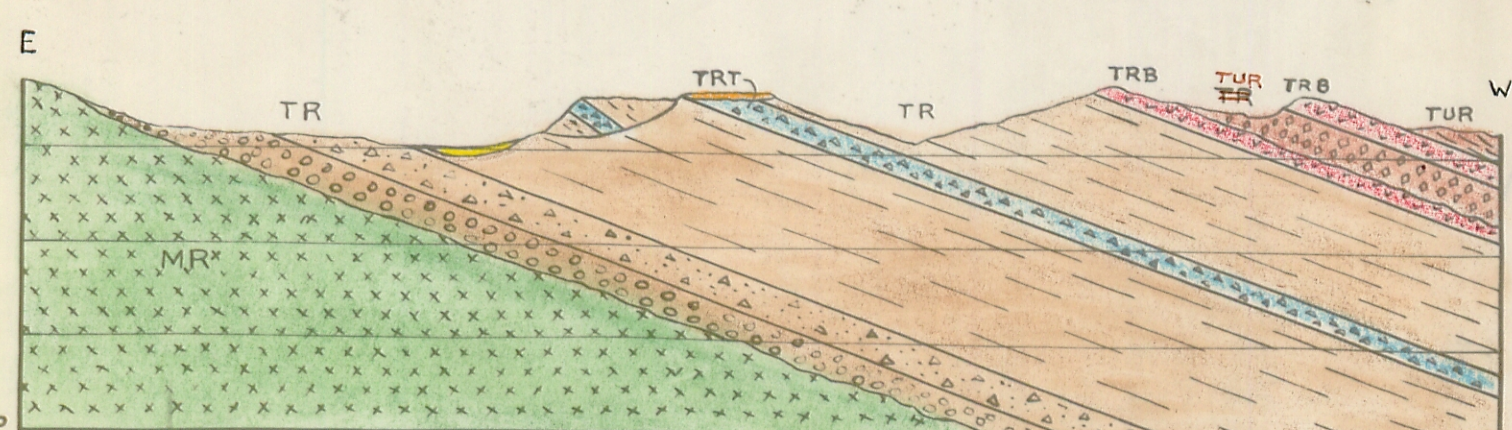
- QAL Quaternary & Recent Alluvium
- QOAL Pleistocene Alluvium
- TUR Upper Ricardo - Arkosic Sandstones
Massive in upper part, sandstone reefs & cherty layers in lower portion.
- TRB Vesicular Basalt
- TR Lower Ricardo - Basal cong., ash and breccia, highly colored arkosic ss, muddy ss, and ashy ss.
- TRT Massive Pink Tuff
- MR Mesozoic Rhyolite & Old Conglomerates
- BD Basalt Dike
- PC Paleozoic Complex - Diorite & Quartzite Conglomerate



COLUMNAR SECTION



SECTION B-B



SECTION A-A
NATURAL SCALE