

**EXPLANATION**

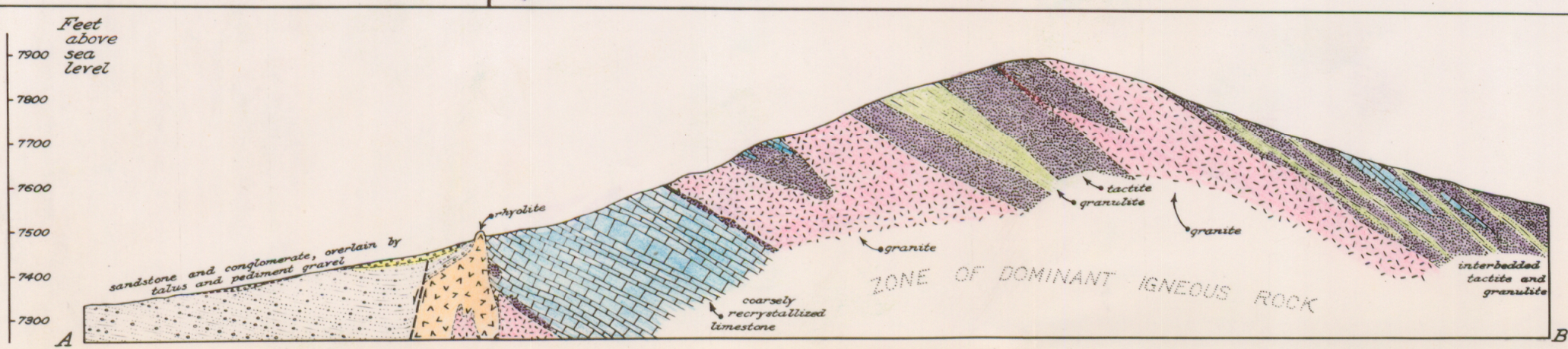
- Quaternary
  - Piled ore and dump material
  - Alluvium
- Tertiary
  - Sandstone and conglomerate of the Santa Fe (?) formation, veneered with talus and pediment gravel
  - Aplite and fine-grained granite
  - Rhyolite and rhyolite porphyry
  - Autochthonous rhyolite breccia
  - Abo sandstone
- Carboniferous (with Tertiary metamorphic effects)
  - Recrystallized limestone, locally partially silicated
  - Hornfels and pyroxene- or clinzoisite-rich granulite
  - Recrystallized limestone with interbedded granulite
  - Tactite
  - Tactite known to contain appreciable amounts of beryllium
  - Tactite known to contain appreciable amounts of tungsten
  - Tactite-granulite-hornfels complex, undifferentiated
  - Lower quartzite series
  - Basal conglomerate

Strike and dip of beds  
 Fault  
 Old exploratory workings  
 Area mapped in greater detail and shown on another map

0 100 200 500  
 Scale in feet  
 Contour interval: 25 feet  
 Datum is mean sea level

Topography by R.H. Jahns and W.P. Irwin; geology by R.H. Jahns  
 May-September, 1942.

- Index to mineralized areas:**
- 1 Lower Discovery Gulch
  - 2 West Slope
  - 3 Brown
  - 4 Jackpot No. 1
  - 4a Jackpot Extension
  - 5 Scheelemite
  - 6 Parker Strike
  - 7 Lucky Strike
  - 8 Tungsten Reef
  - 9 Scheelite Gem
  - 10 South Peak
  - 11 Backslope



0 100 200 500  
 Horizontal scale in feet

Beryllium-bearing tactite is not differentiated in the sections  
 All igneous contacts are hypothetical at depth

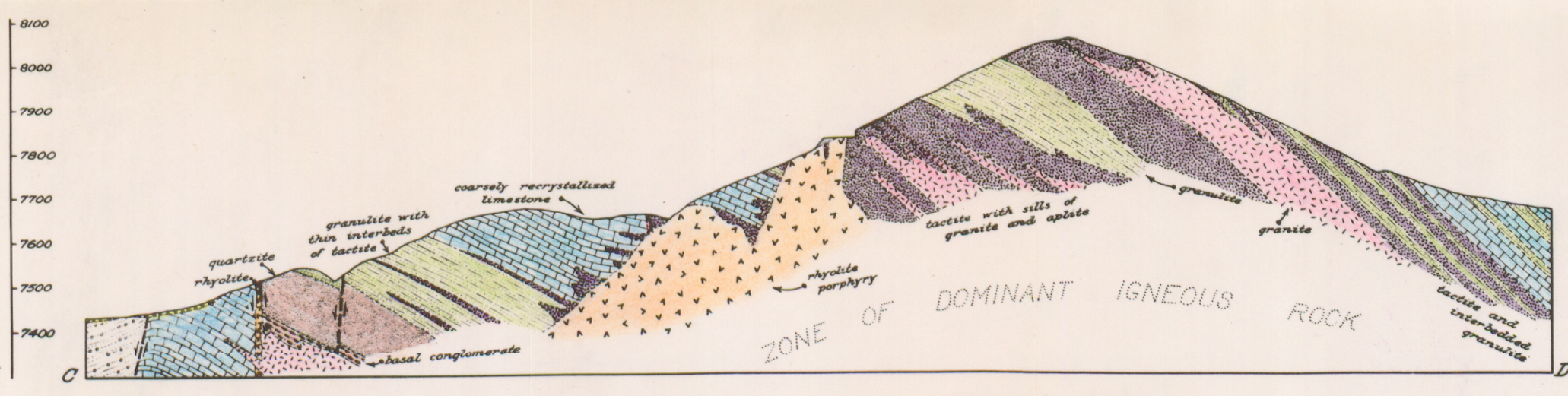


Plate 3  
 Geologic map of Iron Mountain, Sierra and Socorro Counties, New Mexico