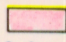
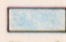
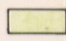
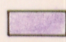
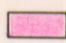
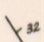
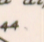
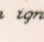


EXPLANATION

-  Aplite and fine-grained granite
-  Limestone, recrystallized and locally silicated
-  Quartzite and pyroxene-rich granulite
-  Massive magnetite-andradite tactite
-  "Ribbon rock" tactite
-  Strike and dip of beds
-  Strike and dip of primary flow-layering in igneous rocks
-  Exploratory trench

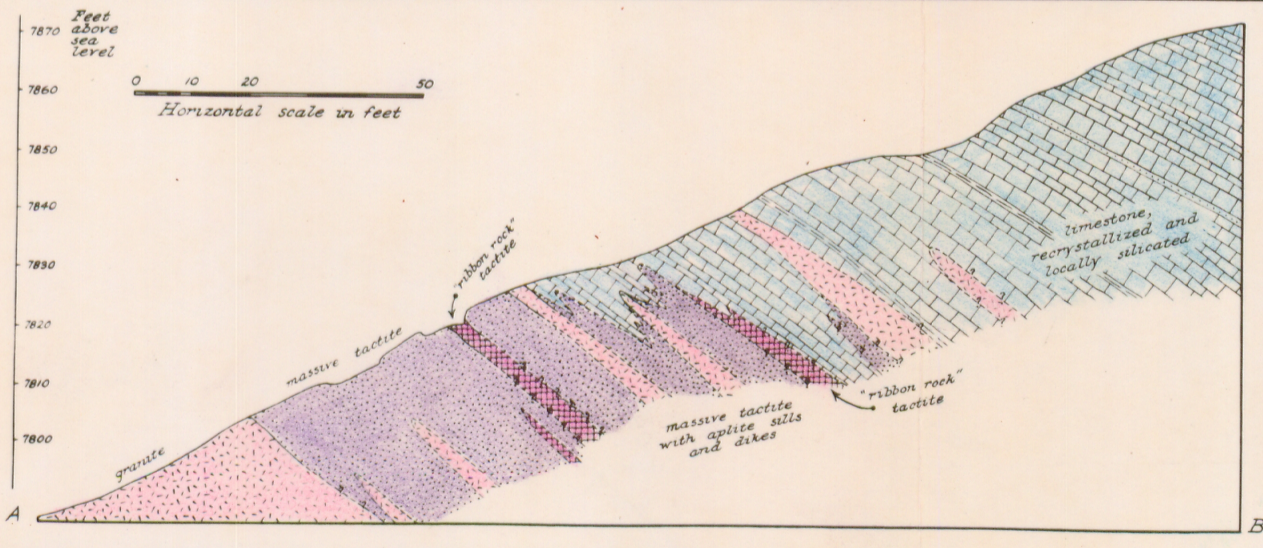
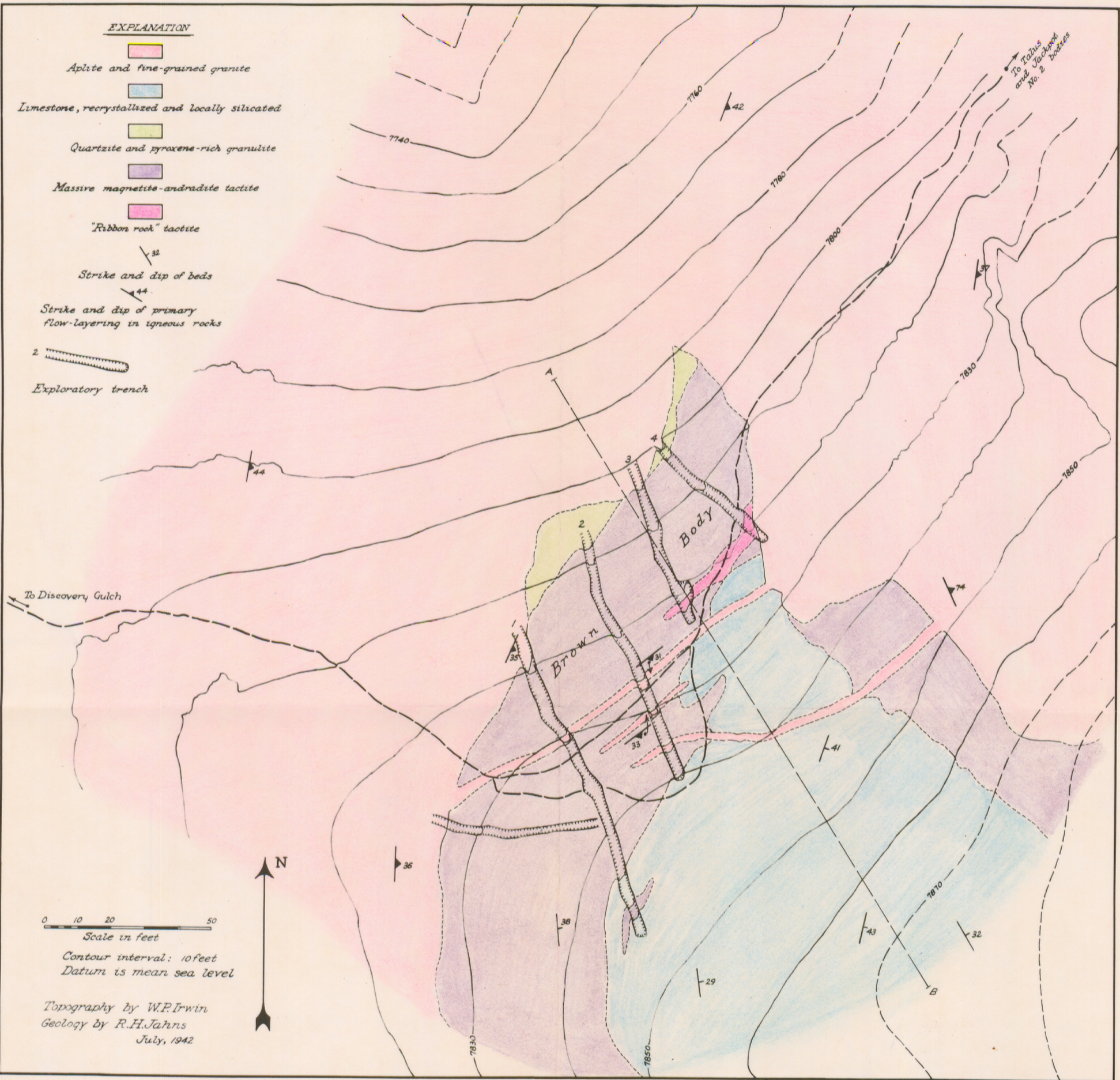


Plate 7

Geologic map of the Brown area, Iron Mountain, Sierra County, New Mexico