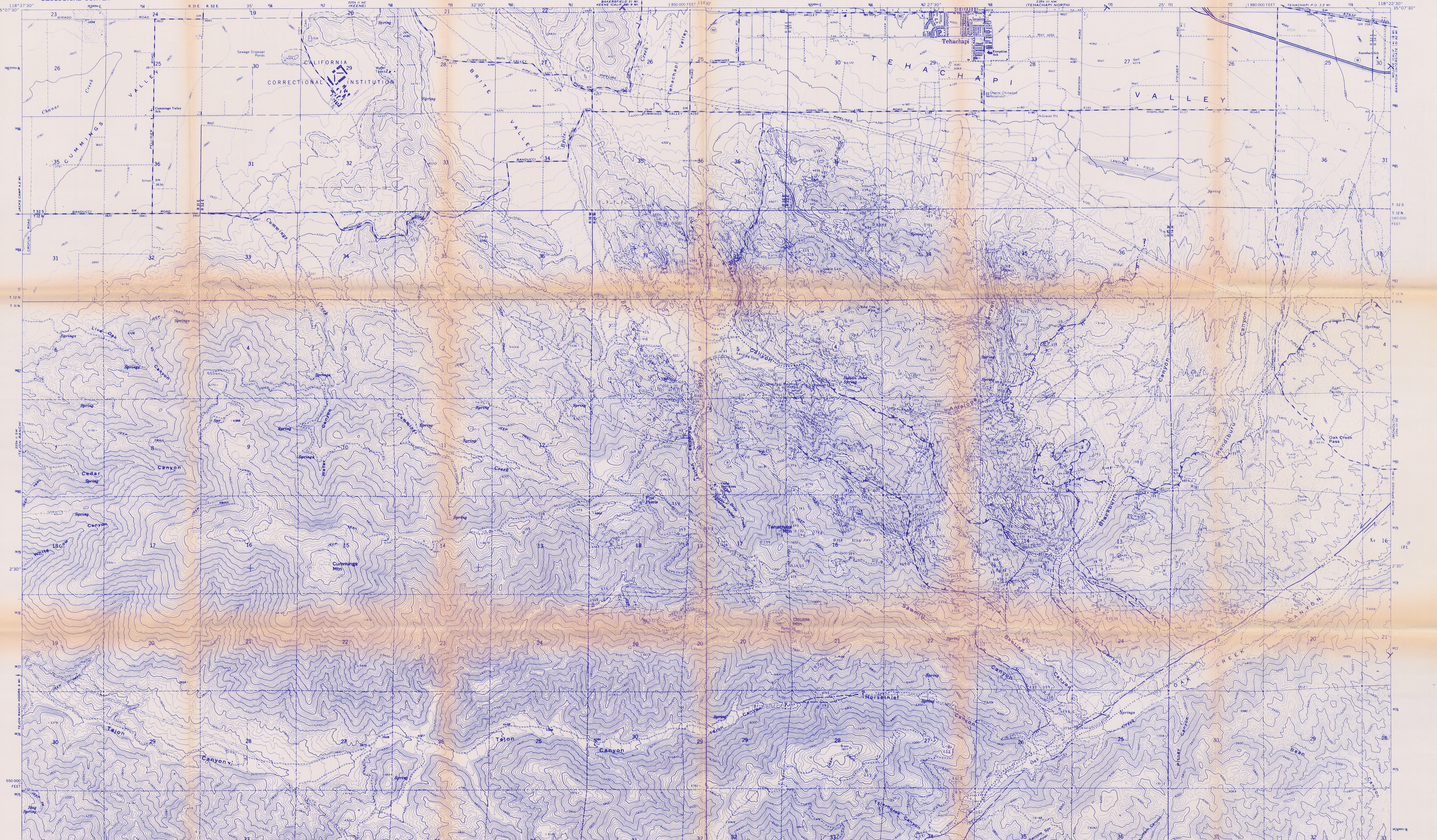


Wood, dj. 1997

Geology LIBRARY
California Institute of Technology



Mapped, edited, and published by the Geological Survey
Control by USGS and USC&GS
Topography by photogrammetric methods from aerial
photographs taken 1963. Field checked 1966

Polyconic projection. 1927 North American datum
10,000-foot grid based on California coordinate system, zone 5
1,000-meter Universal Transverse Mercator grid ticks,
zone 11, shown in blue
To place on the predicted North American Datum 1983,
move the projection lines 6 meters north and
85 meters east as shown by dashed corner ticks

Fine red dashed lines indicate selected fence lines
Map photorevised 1973
No major culture or drainage changes observed

UTM GRID AND 1984 MAGNETIC NORTH
DECLINATION AT CENTER OF SHEET

SCALE 1:24,000

CONTOUR INTERVAL 40 FEET
DOTTED LINES REPRESENT 20 FOOT CONTOURS
NATIONAL GEODETIC VERTICAL DATUM OF 1929

QUADRANGLE LOCATION

THIS MAP COMPLIES WITH NATIONAL MAP ACCURACY STANDARDS
FOR SALE BY U. S. GEOLOGICAL SURVEY, DENVER, COLORADO 80225, OR RESTON, VIRGINIA 22092
A FOLDER DESCRIBING TOPOGRAPHIC MAPS AND SYMBOLS IS AVAILABLE ON REQUEST

CUMMINGS MTN., CALIF.
N3500-111830/7.5

1966
PHOTOINSPECTED 1973
DMA 2254 II SE-SERIES V895

Mapped, edited, and published by the Geological Survey
Control by USGS and USC&GS
Topography by photogrammetric methods from aerial
photographs taken 1963. Field checked 1966

Polyconic projection. 1927 North American datum
10,000-foot grid based on California coordinate system, zone 5
1,000-meter Universal Transverse Mercator grid ticks,
zone 11, shown in blue
Fine red dashed lines indicate selected fence lines
Revisions shown in purple compiled from aerial photographs
taken 1973. This information not field checked

UTM GRID AND 1973 MAGNETIC NORTH
DECLINATION AT CENTER OF SHEET

SCALE 1:24,000

CONTOUR INTERVAL 40 FEET
DOTTED LINES REPRESENT 20 FOOT CONTOURS
NATIONAL GEODETIC VERTICAL DATUM OF 1929

QUADRANGLE LOCATION

THIS MAP COMPLIES WITH NATIONAL MAP ACCURACY STANDARDS
FOR SALE BY U. S. GEOLOGICAL SURVEY, DENVER, COLORADO 80225, OR RESTON, VIRGINIA 22092
A FOLDER DESCRIBING TOPOGRAPHIC MAPS AND SYMBOLS IS AVAILABLE ON REQUEST

TEHACHAPI SOUTH, CALIF.
N3500-111822.5/7.5

1966
PHOTOREVISED 1973
AMS 2254 III SE-SERIES V895

ROAD CLASSIFICATION
Primary highway, all weather. Light duty road, all weather, hard surface. Improved surface.
Secondary highway, all weather. Unimproved road, fair or dry hard surface. weather

State Route

GEOLOGIC SAMPLE LOCATION MAP
FOR 9X-TH-1-1-1 SAMPLES
@XXX = Sample Location and Number

This plot is part of Ph.D. thesis
in geology by David J. Wood at the
California Institute of Technology,
Pasadena, CA.