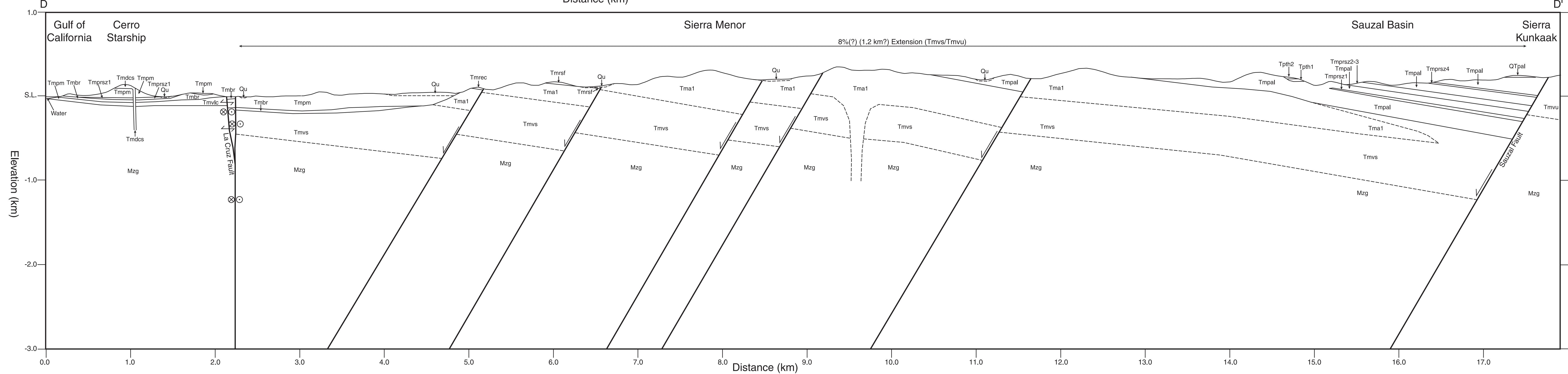
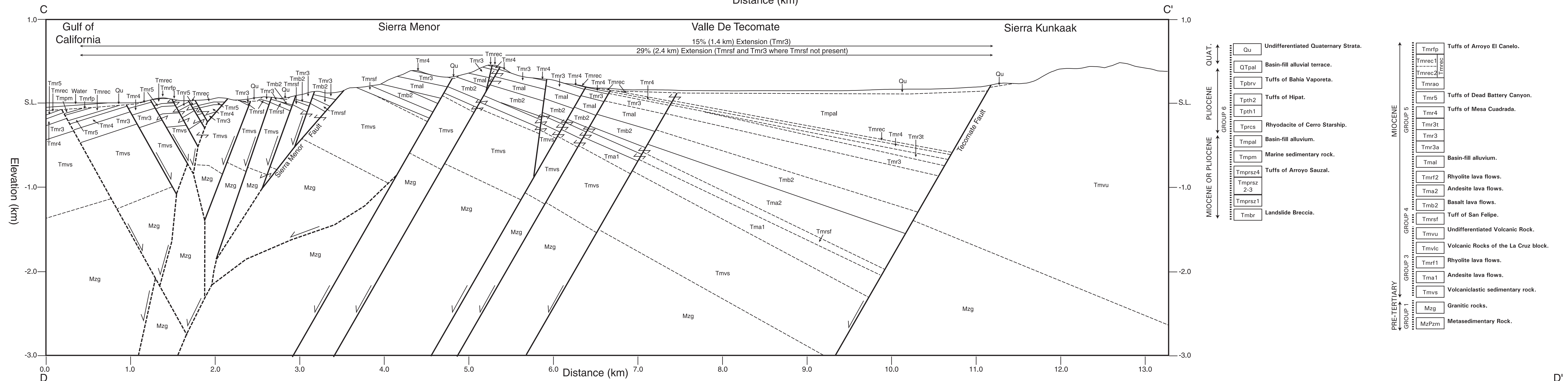
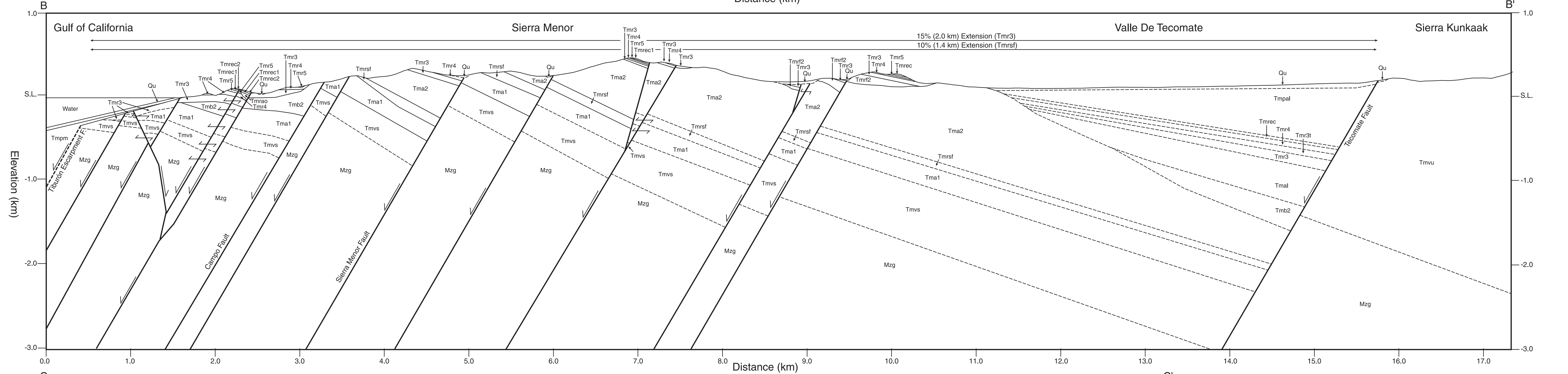
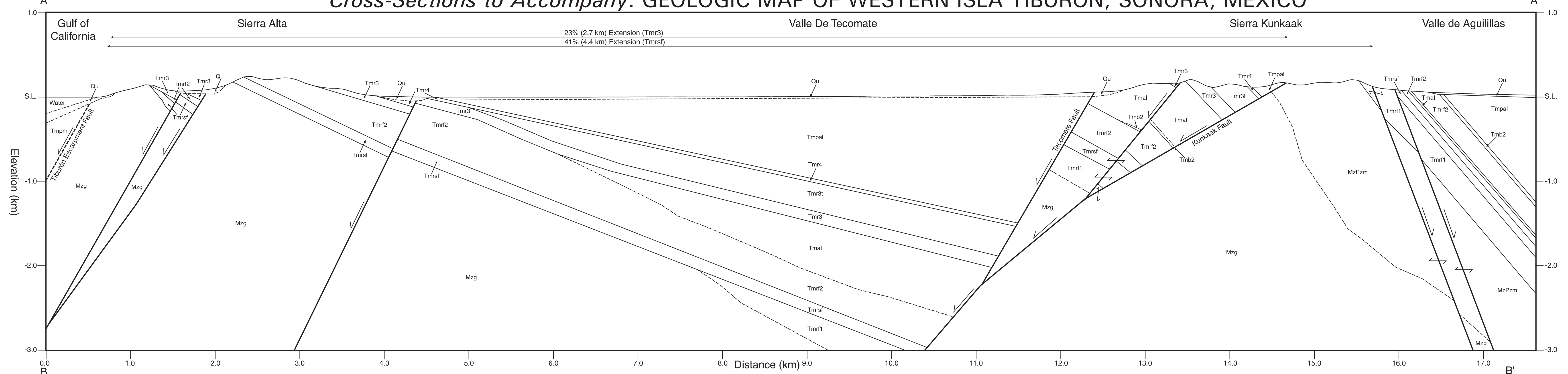


Cross-Sections to Accompany: GEOLOGIC MAP OF WESTERN ISLA TIBURÓN, SONORA, MEXICO



QUAT.	Qu	Undifferentiated Quaternary Strata.
PLIOCENE	QTpal	Basin-fill alluvial terrace.
	Tpbrv	Tuffs of Bahía Vaporeta.
	Tpth2	Tuffs of Hipat.
MIOCENE OR PIOCENE	Tprcs	Rhyodacite of Cerro Starship.
	Tmpal	Basin-fill alluvium.
MIOCENE OR PIOCENE	Tmpm	Marine sedimentary rock.
	Tmprs24	Tuffs of Arroyo Sauzal.
	Tmprs2-3	Tuffs of Arroyo Sauzal.
	Tmprs1	Tuff of San Felipe.
	Tmbr	Landslide Breccia.
MIOCENE	Tmrf6	Tuffs of Arroyo El Canelo.
	Tmrec1	Tuffs of Bahia Vaporeta.
	Tmrec2	Tuffs of Bahia Vaporeta.
	Tmrao	Tuffs of Dead Battery Canyon.
	Tmr5	Tuffs of Mesa Cuadrada.
MIOCENE	Tmr4	Tuffs of Mesa Cuadrada.
	Tmr3t	Tuffs of Mesa Cuadrada.
	Tmr3	Tuffs of Mesa Cuadrada.
MIOCENE	Tmr3a	Basin-fill alluvium.
	Tmal	Basin-fill alluvium.
	Tmrf2	Rhyolite lava flows.
MIOCENE	Tma2	Andesite lava flows.
	Tmb2	Basalt lava flows.
MIOCENE	Tmrsf	Tuff of San Felipe.
	Tmvu	Undifferentiated Volcanic Rock.
MIOCENE	Tmvlc	Volcanic Rocks of the La Cruz block.
	Tmf1	Rhyolite lava flows.
MIOCENE	Tma1	Andesite lava flows.
	Tmvs	Volcaniclastic sedimentary rock.
MIOCENE	Mzq	Granitic rocks.
	MzPzm	Metasedimentary Rock.