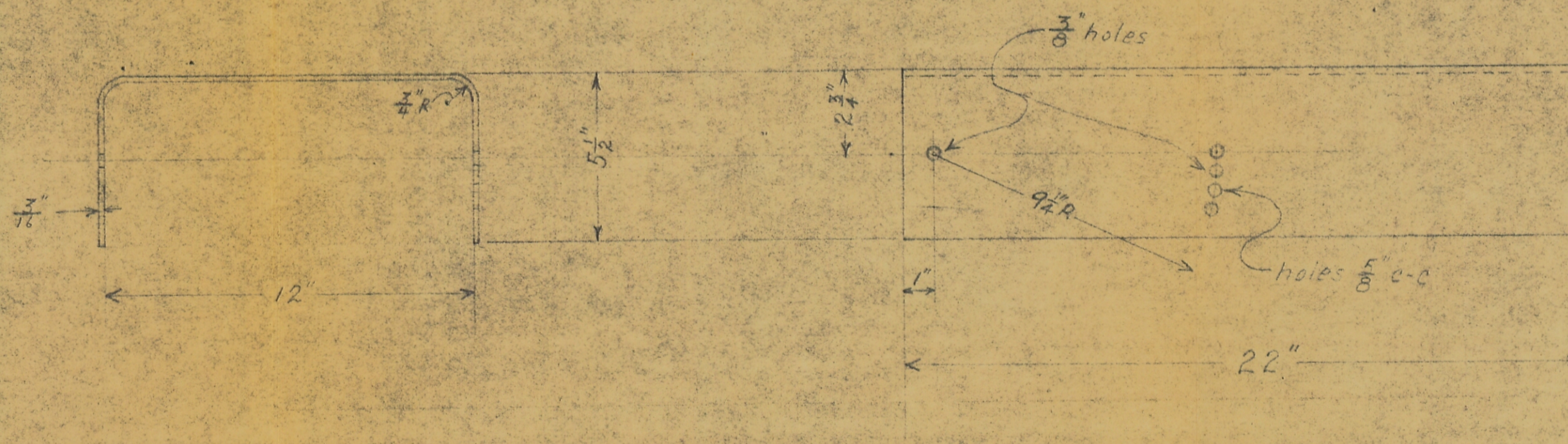




Location, number and size of holes to be determined at time of installation of bracket on wing.



MOUNTING BRACKET - TWO REQD

3/16" STEEL PLATE							TOLERANCES ±.010 OR 1/16" UNLESS OTHERWISE NOTED	
							SCALE - 1/2" = 1"	
MATERIAL	FINISH	HEAT TREAT	DRAFTSMAN	CHECKED	APPROVED	ENGINEER		
GUGGENHEIM AERONAUTICAL LABORATORY CALIFORNIA INSTITUTE OF TECHNOLOGY			JET PROPULSION PROJECT				4-265-P-17-3 No. 2 DRAWING NO.	