

Spotila - ju - 1999

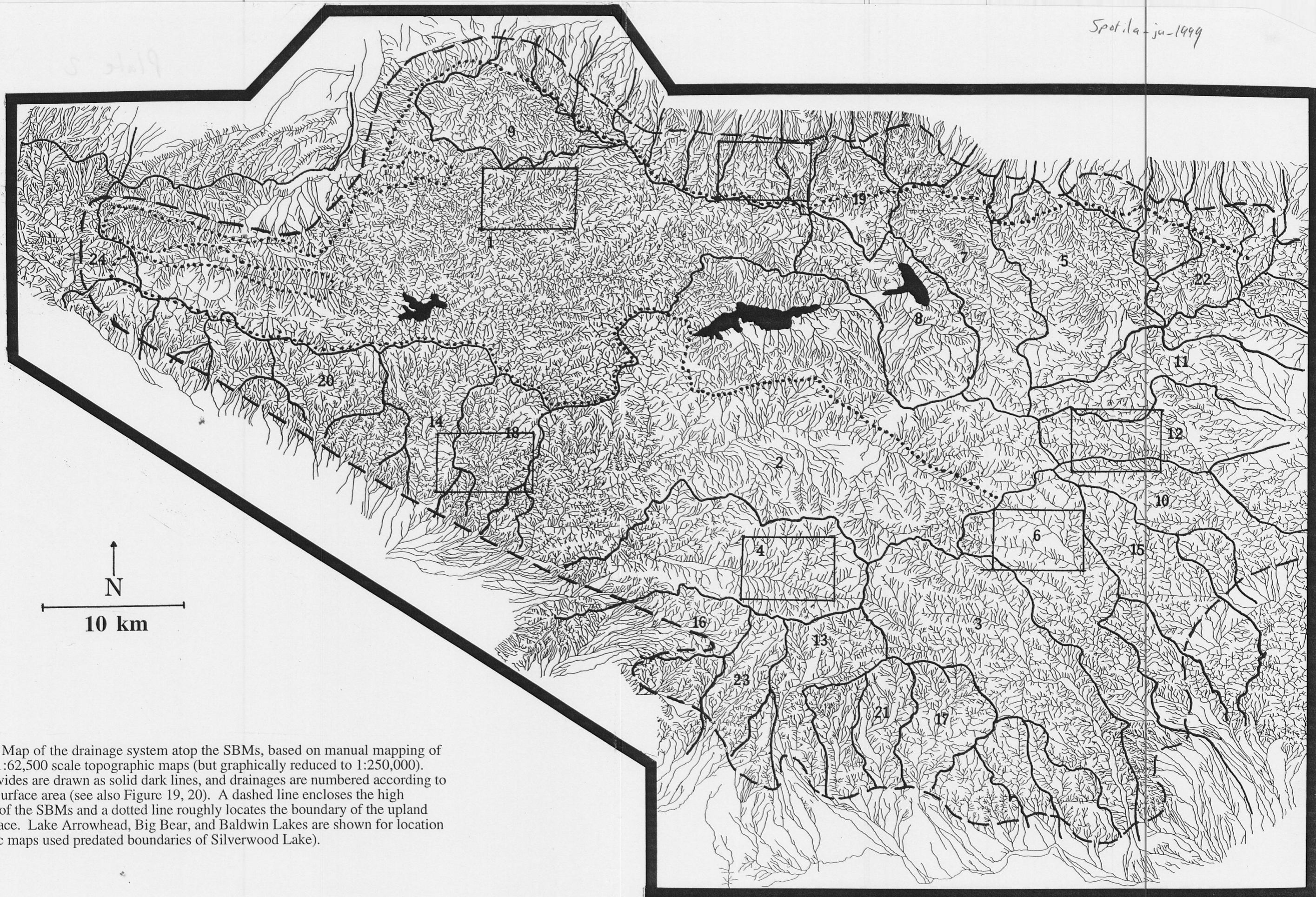


Figure 17: Map of the drainage system atop the SBMs, based on manual mapping of streams on 1:62,500 scale topographic maps (but graphically reduced to 1:250,000). Drainage divides are drawn as solid dark lines, and drainages are numbered according to decreasing surface area (see also Figure 19, 20). A dashed line encloses the high topography of the SBMs and a dotted line roughly locates the boundary of the upland plateau surface. Lake Arrowhead, Big Bear, and Baldwin Lakes are shown for location (topographic maps used predated boundaries of Silverwood Lake).