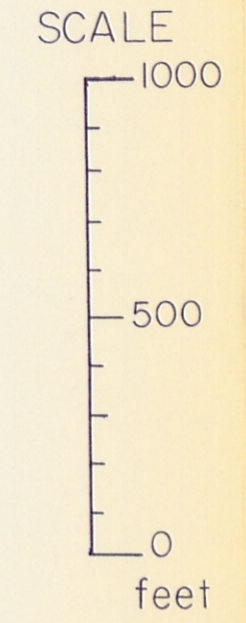
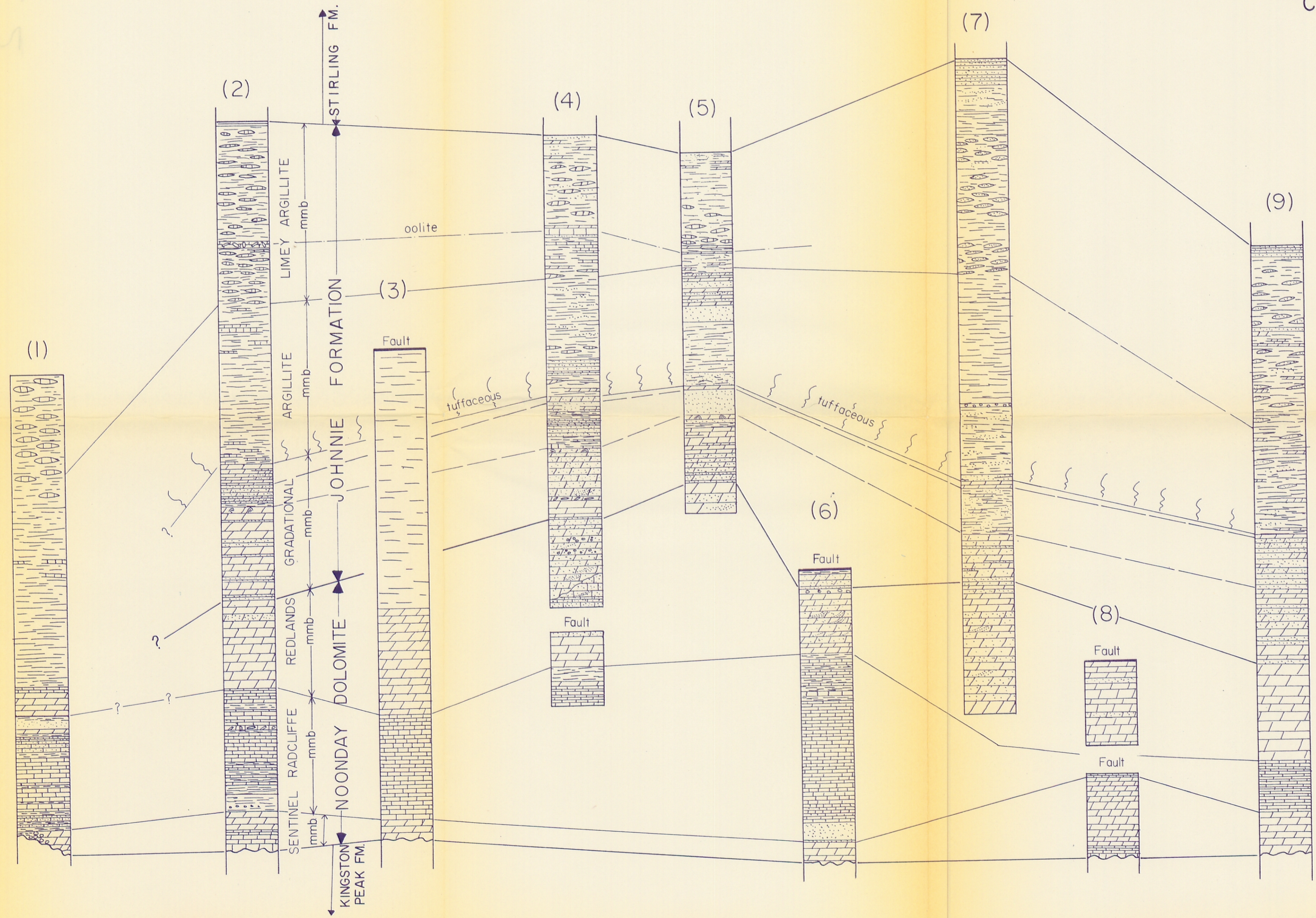


STRATIGRAPHIC CORRELATIONS CENTRAL & SOUTHERN PANAMINT RANGE



- (1) ROGER'S PEAK
LANPHERE (1962), STEWART (1965)
- (2) HANAUPAH CANYON
- (3) SURPRISE CANYON
MURPHY (1932)
- (4) UPPER JOHNSON CANYON
- (5) SIX SPRINGS—LOWER JOHNSON CAN.
STEWART (1965)
- (6),(7),(8) HAPPY CANYON-PLEASANT
CANYON AREA
ALBEE (1963)
- (9) NORTH BUTTE VALLEY
JOHNSON (1957)