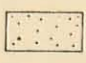
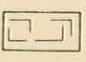
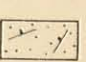
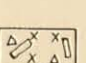
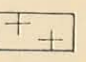

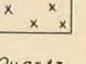
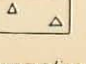
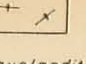
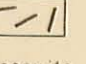

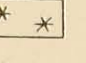
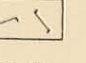
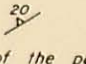
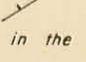
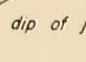
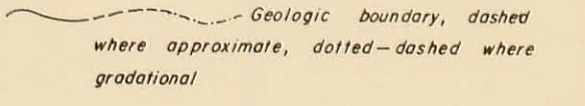
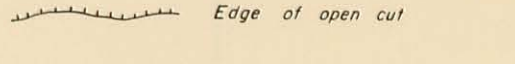
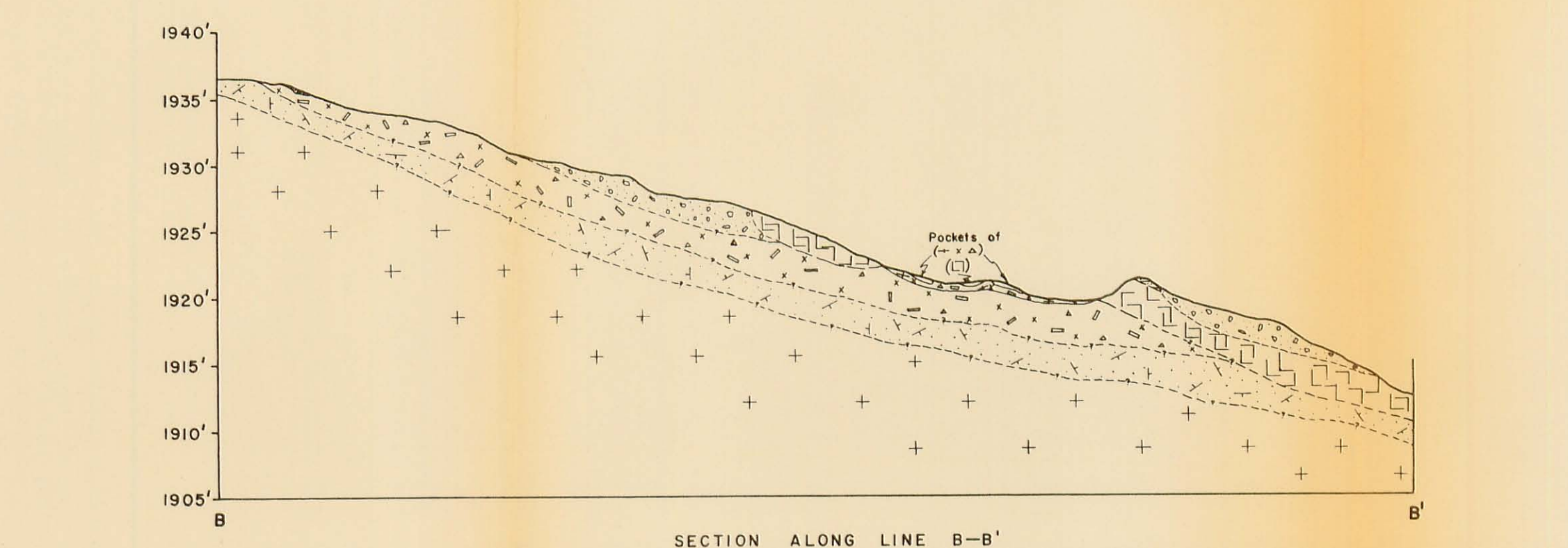
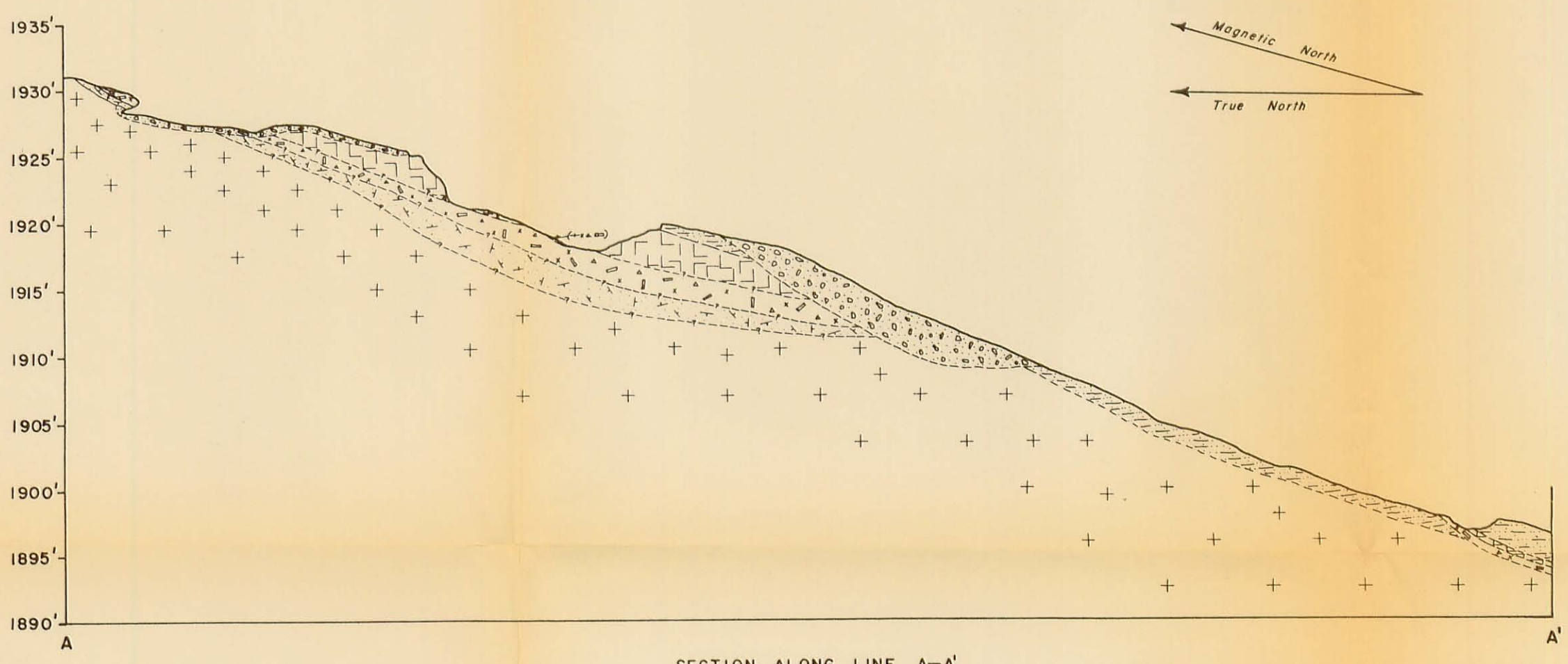


EXPLANATION

-  Alluvium, talus, and artificial fill, undivided
 -  Graphic granite, medium- to coarse-grained microcline perthite-quartz pegmatite with minor tourmaline
 -  Layered aplite, fine- to medium-grained, sugary textured albite-quartz-microcline-tourmaline pegmatite
 -  Quartz-perthite-tourmaline pegmatite, fine- to coarse-grained
 -  Green Valley tonalite
 -  Coarse blocky perthite
 -  Quartz
 -  Tourmaline
 -  Cleavelandite
 -  Muscovite
 -  Garnet
 -  Topaz
 -  Biotite
 -  Strike and dip of the pegmatite dike
 -  Strike and dip of layering in the layered aplites
 -  Strike and dip of joints
 -  Geologic boundary, dashed where approximate, dotted-dashed where gradational
 -  Edge of open cut
- 0 5 10 15 20 25 30
Scale in feet
Contour interval 5 feet — Datum is mean sea level



GEOLOGIC MAP AND CROSS SECTIONS OF THE LITTLE THREE MINE, SAN DIEGO COUNTY, CALIFORNIA

Mapped by
Dale R. Simpson
1957 — 1959