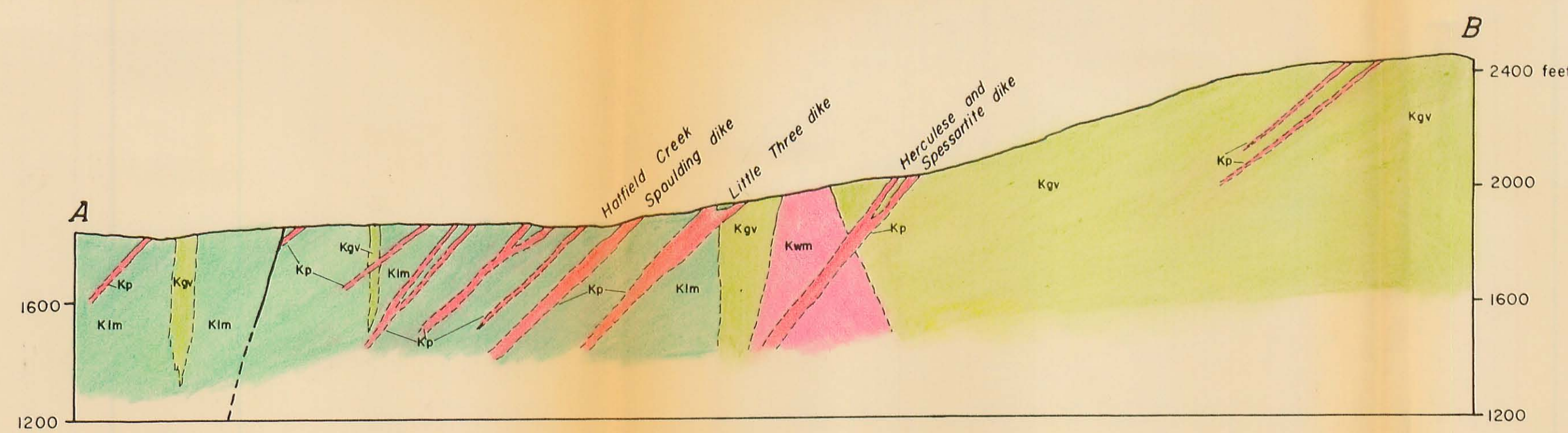


Topography from Ramona quadrangle, 7.5 minute series, U. S. Geol. Survey

Geology by Dale R. Simpson 1957-1960



Section along line A-B

EXPLANATION

Kp

Pegmatite undivided

Kp

Layered Aplite

fine- to medium- grained, sugary textured albite-
quartz-microcline-tourmaline pegmatite

Kp

Graphic granite

medium- to coarse- grained, microcline perthite-
quartz pegmatite with minor tourmaline

Kwm

Woodson Mountain granodiorite

Klm

Lakeview Mountain tonalite

Kgv

Green Valley tonalite

40

Strike and dip of the pegmatite dike

40 30

Strike and dip of the pegmatite dike showing
direction and plunge of surface undulation

40

Strike and dip of layering in the layered aplites

40

Strike and dip of joints

40

Strike of vertical joint

80 60

Strike and dip of fault plane showing direction and
plunge of slickenside on the fault plane

Contact, dashed where approximate

Fault, dashed where approximate

Contour interval 20 feet

Datum is mean sea level

0 400 800 1200 1600 2000

Scale in feet

