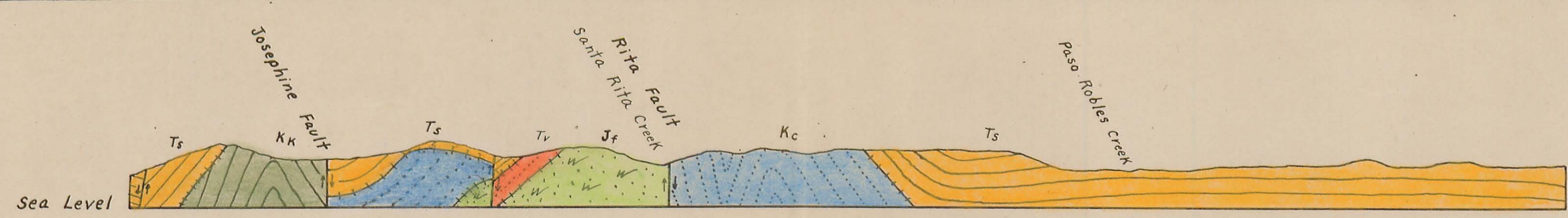
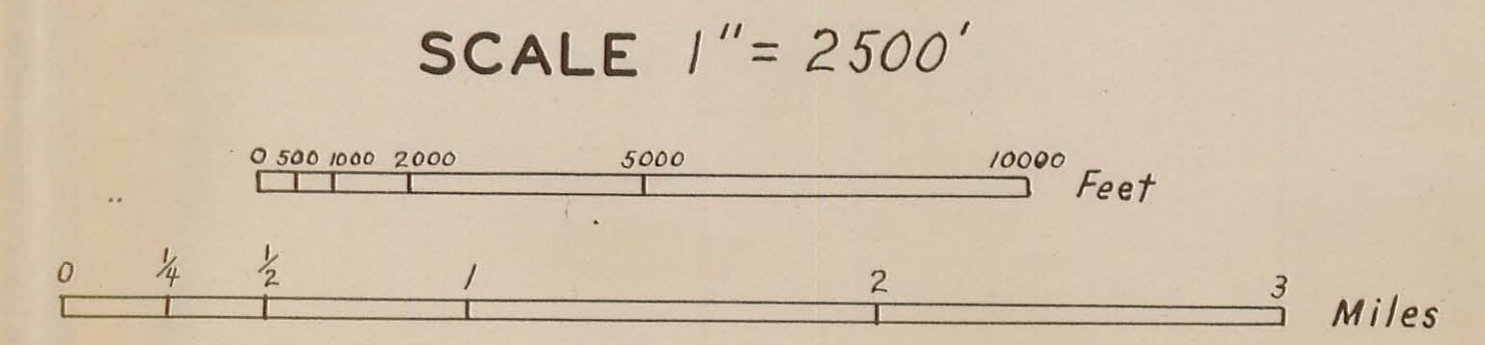


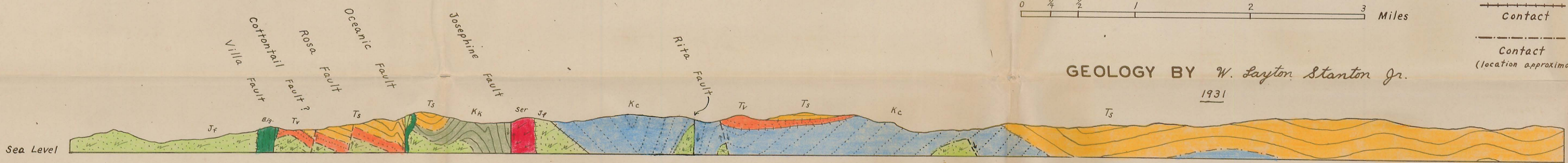
GEOLOGIC SECTIONS ACROSS THE ADELAIDA QUADRANGLE, CALIF.



SECTION A-A

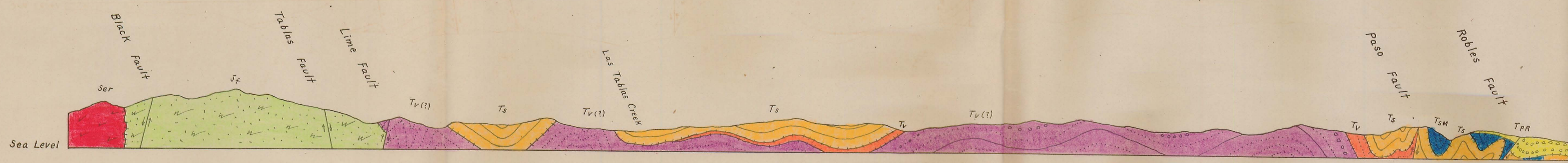


- Fault
- Possible Fault
- Contact
- Contact (location approximate)

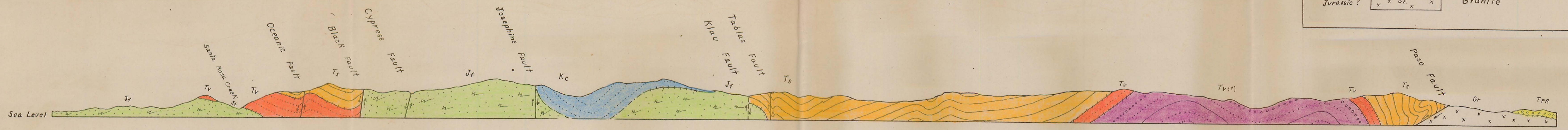


SECTION B-B

GEOLOGY BY *W. Layton Stanton Jr.*
1931



SECTION C-C



SECTION D-D

LEGEND

SEDIMENTARY ROCKS	
Pliocene	Paso Robles
	Santa Margarita
	Salinas
Miocene	Vaqueros
	Vaqueros (?)
Cretaceous	Chico
	Knoxville
Jurassic?	Franciscan
IGNEOUS ROCKS	
Pliocene	Basic Intrusives
Post-Franciscan	Serpentine
Jurassic?	Granite

(Note: Tertiary and Mesozoic groupings are indicated by brackets on the right side of the legend.)