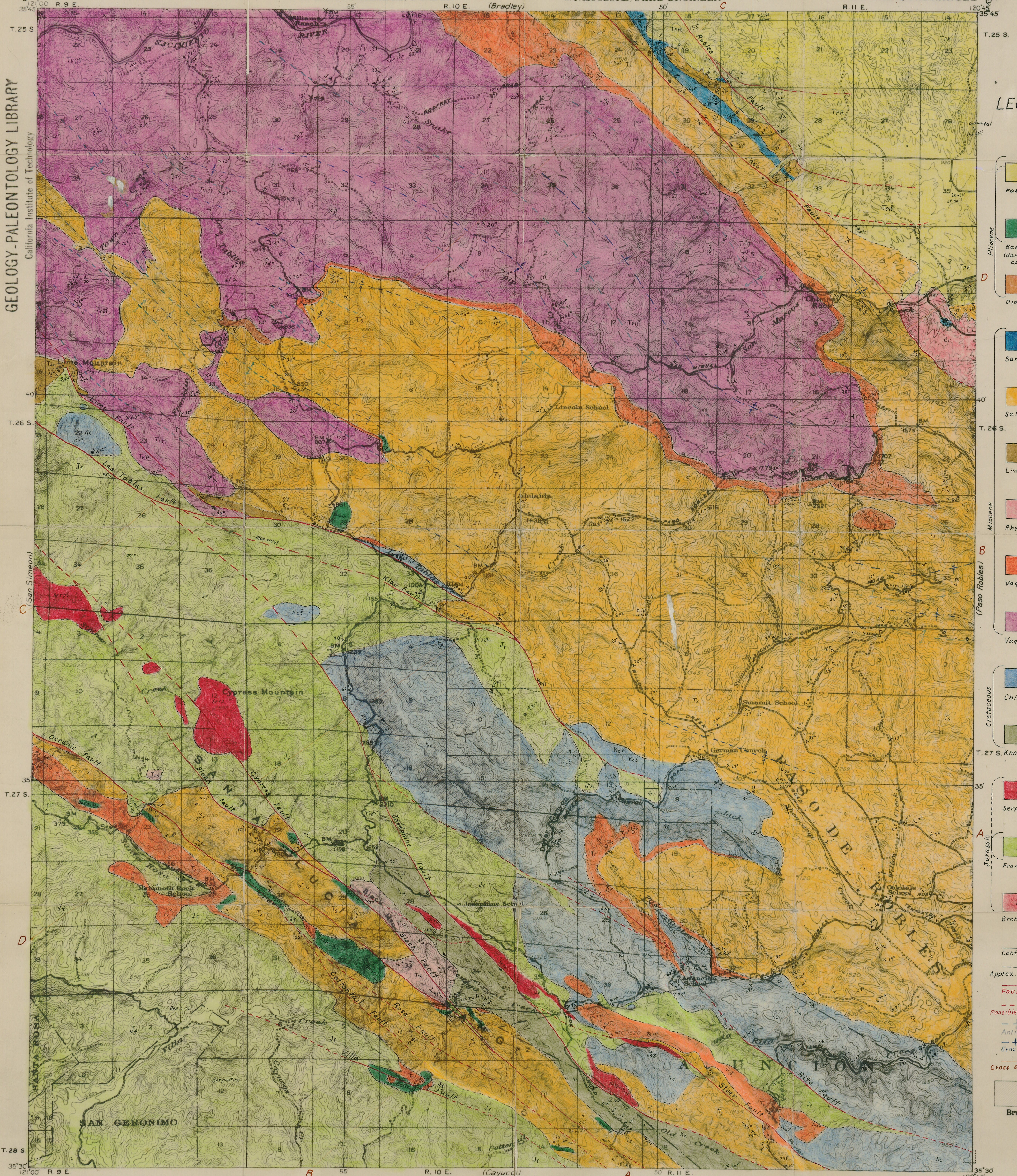


GEOLOGY - PALEONTOLOGY LIBRARY
California Institute of Technology

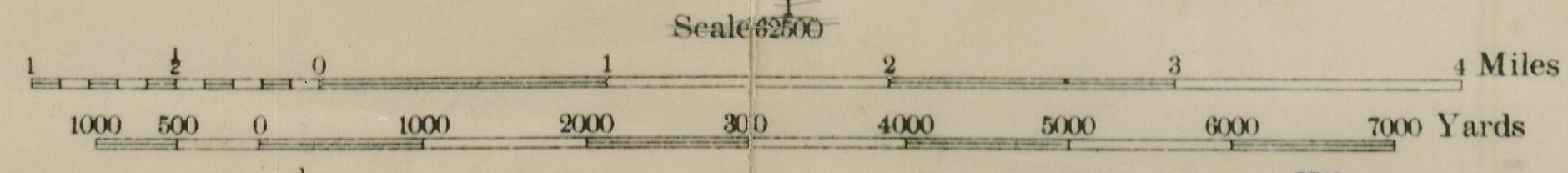


LEGEND

- Tpa
Paso Robles
- Tsm
Santa Margarita
- Ts
Salinas
- Tla
Limestone
- Tra
Rhyolite
- Tv
Vaqueros
- Tve
Vaqueros (?)
- Kc
Chico
- Kk
Knoxville
- Ser
Serpentine
- Jf
Franciscan
- Gr
Granite
- Contact
- Approx. Contact
- Fault
- Possible Fault
- Anticline
- Syncline
- Cross section Line
- Brush

R. B. Marshall, Chief Geographer.
Geo. R. Davis, Geographer in charge.
Topography by N. E. Ballmer, W. G. Carson,
E. G. Hamilton, and N. A. Huth.
Control by R. C. Seitz and C. F. Urquhart.
Surveyed in 1918.

Geology by *W. Layton Stanton Jr.*



Contour interval 50 feet.
Datum is mean sea level.

GEOLOGIC MAP

TRUE NORTH
MAGNETIC NORTH
APPROXIMATE MEAN DECLINATION, 1918
ADELAIDA
Note: In joining Cayucos use dotted projection corners

SURVEYED IN COOPERATION WITH THE WAR DEPARTMENT AND THE STATE OF CALIFORNIA