

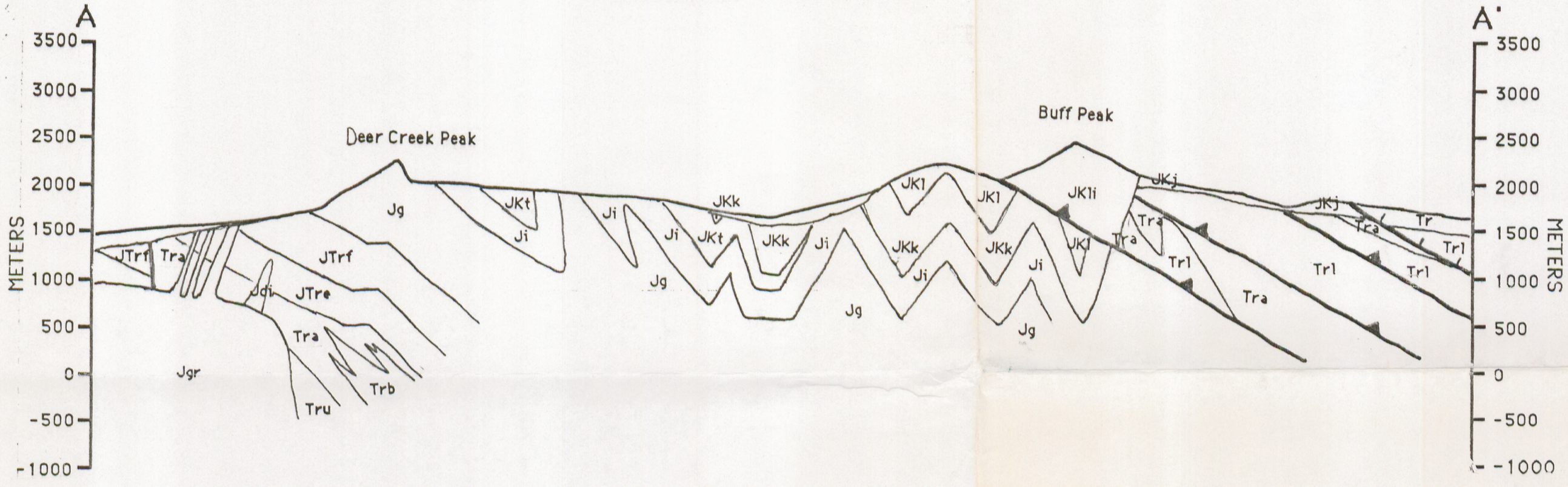
# PLATE 2

## GEOLOGIC CROSS-SECTIONS FROM THE JACKSON MOUNTAINS

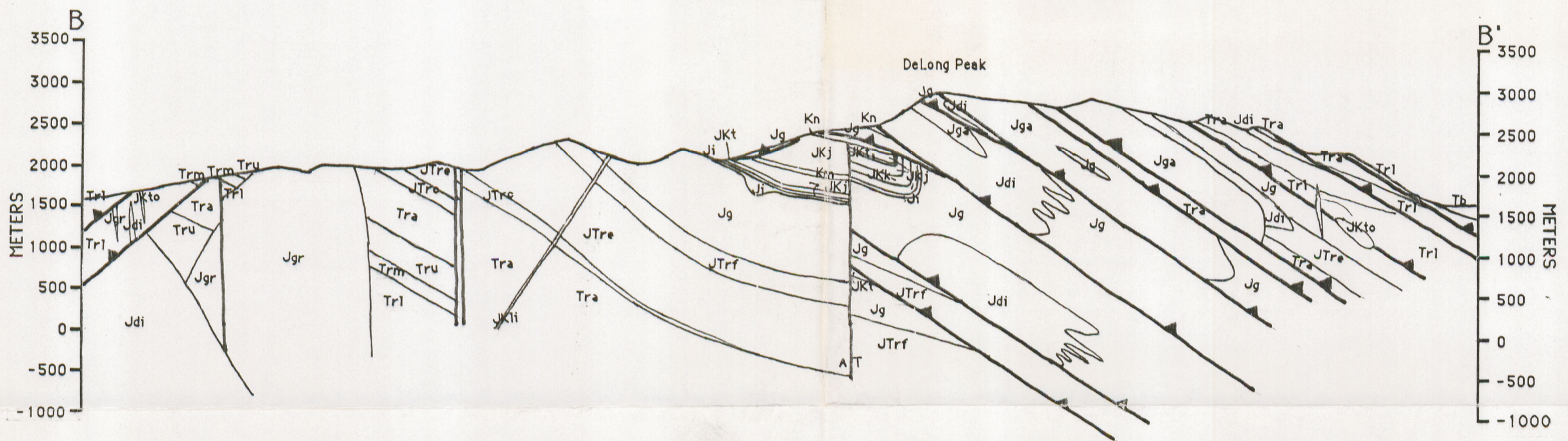
Kevin A. Maher, Ph.D. Thesis, 1989, California Institute of Technology  
(see geologic map, plate 1, for lithostratigraphic units, symbols, and section placement)

SCALE 1:50,000  
1 cm = 500 m

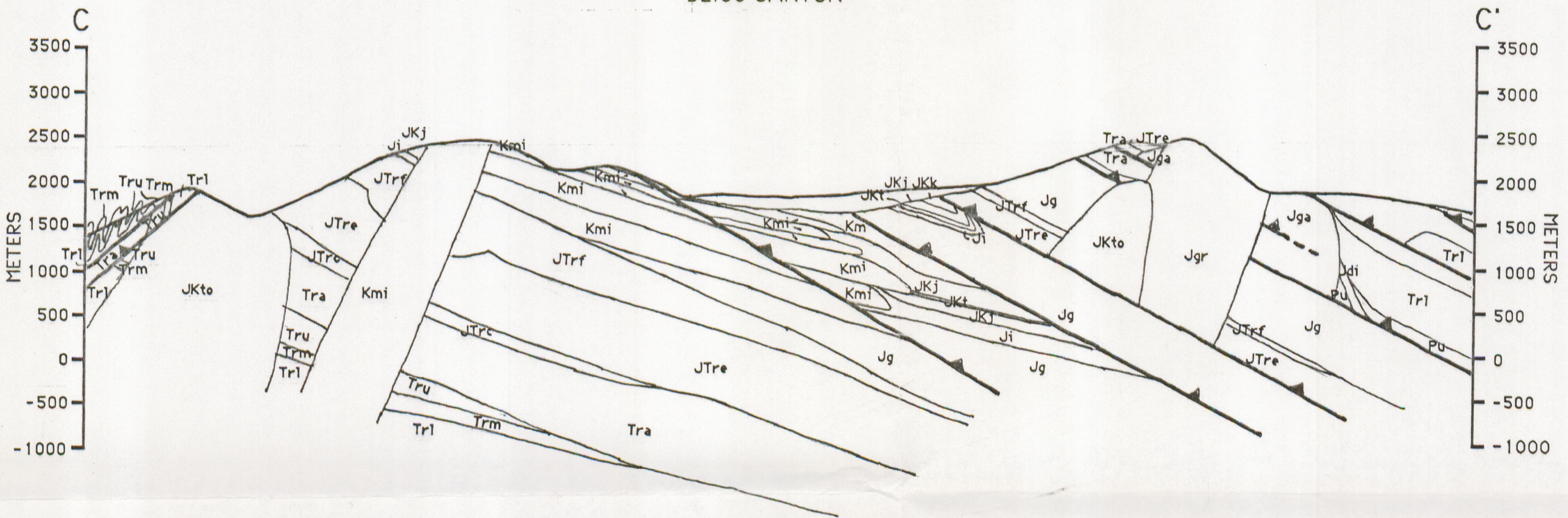
BUFF PEAK



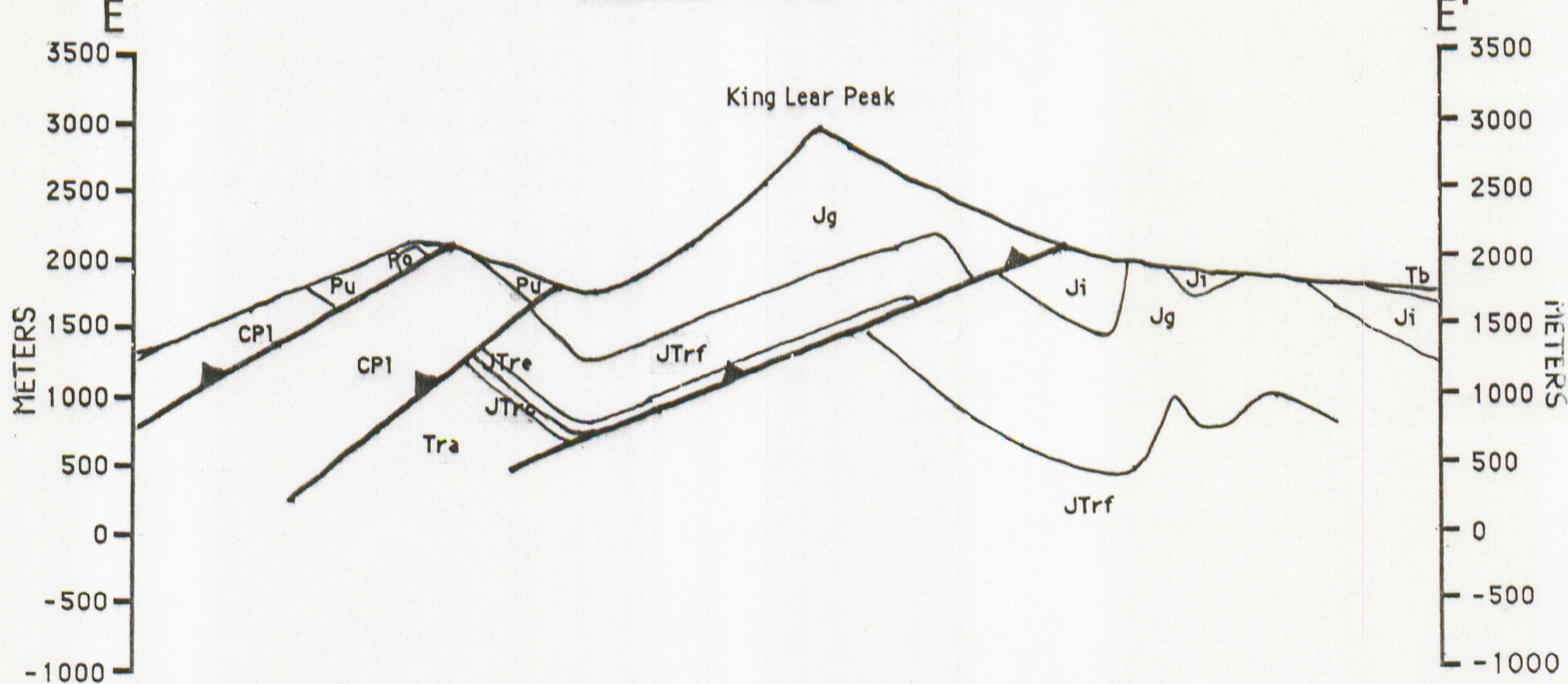
JACKSON CREEK



BLISS CANYON



KING LEAR PEAK



NAVAJO PEAK

