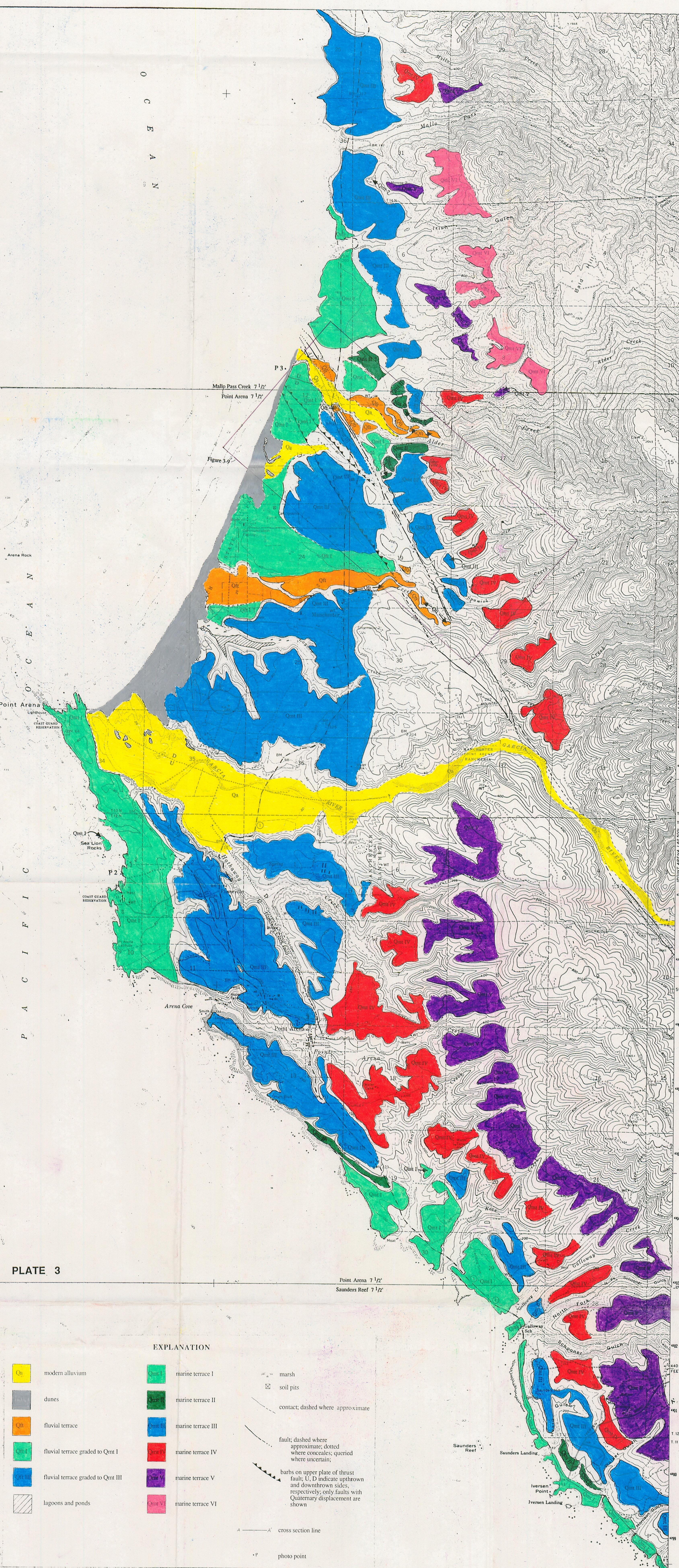


O  
C  
E  
A  
N

P  
A  
C  
I  
F  
I  
C

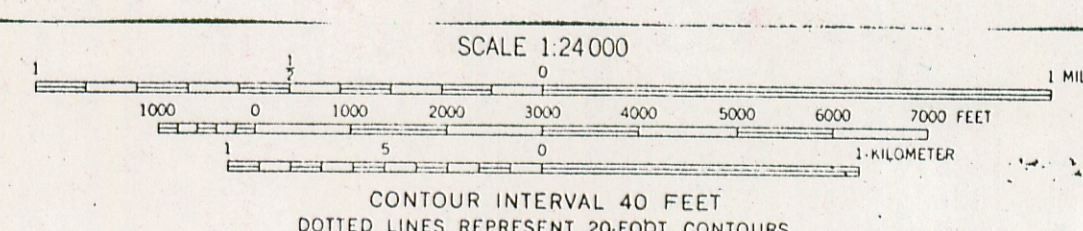
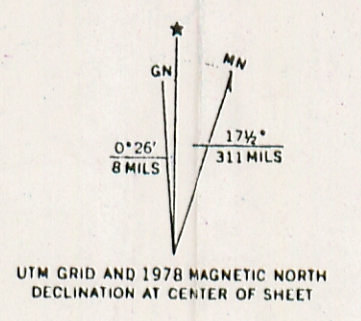
PLATE 3



**EXPLANATION**

modern alluvium	marine terrace I	marsh
dunes	marine terrace II	soil pits
fluvial terrace	marine terrace III	contact; dashed where approximate
fluvial terrace graded to Qm1	marine terrace IV	fault; dashed where approximate; dotted where concealed; queried where uncertain
fluvial terrace graded to Qm3	marine terrace V	bars on upper plate of thrust fault; U, D indicate upthrown and downthrown sides, respectively; only faults with Quaternary displacement are shown
lagoons and ponds	marine terrace VI	cross section line
		photo point

Mapped, edited and published by the Geological Survey  
 Control by USGS, NOS/NOAA and USCE  
 Topography from aerial photographs by photogrammetric methods  
 Aerial photographs taken 1957. Field check 1960  
 Selected hydrographic data compiled from NOS/NOAA surveys (1929)  
 This information is not intended for navigational purposes  
 Polycone projection. 1927 North American datum  
 10,000-foot grid based on California coordinate system, zone 2  
 1000-meter Universal Transverse Mercator grid ticks  
 zone 10, shown in blue  
 To place on the predicted North American Datum 1983  
 move the projection lines 18 meters north and  
 58 meters east as shown by dashed corner ticks  
 Dashed land lines indicate approximate locations  
 There may be private inholdings within the boundaries of  
 the National or State reservations shown on this map



CONTOUR INTERVAL 20 FEET  
 DOTTED LINES REPRESENT 40 FEET  
 NATIONAL GEODETIC VERTICAL DATUM OF 1929  
 DEPTH CURVES AND SOUNDINGS IN FEET - DATUM IS MEAN LOWER LOW WATER  
 SHORELINE SHOWN REPRESENTS THE APPROXIMATE LINE OF MEAN HIGH WATER  
 THE MEAN RANGE OF TIDE IS APPROXIMATELY 4 FEET



**ROAD CLASSIFICATION**  
 Medium duty ——— Light duty ———  
 Unimproved dirt - - - - -  
 State Route ○

**POINT ARENA, CALIF.**  
 NW 4 POINT ARENA 15 QUADRANGLE  
 38123-H6-1F-024

1960  
 PHOTO REVISSED 1978  
 DMA 1261 1 NW-SERIES V895

Revisions shown in purple compiled from aerial photographs  
 taken 1976. This information not field checked. Map edited 1978