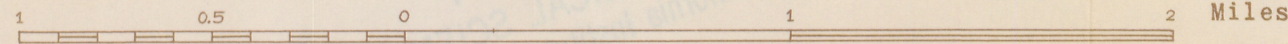


Base map modified from Corps of Engineers, U. S. Army, 1943-1944

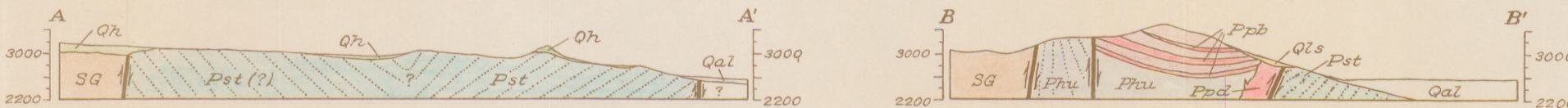
Geology by C. R. Allen, 1952-1954



Contour interval 100 feet



GEOLOGIC MAP AND STRUCTURE SECTIONS OF THE FOOTHILLS NORTH OF BANNING



EXPLANATION

- Qal
Alluvium
- UNCONFORMITY
- Qls
Landslide material
- UNCONFORMITY
- Qh
Heights fanglomerate
- UNCONFORMITY
- Pst
San Timoteo(?) formation
- CONTACT NOT EXPOSED
- Ppc
Pp
Ppb
Ppd
Painted Hill formation
- Resistant conglomerate bed, Ppc; interlayered flows of olivine basalt, Ppb, and associated dikes of olivine basalt, Ppd.
- Phu
Phl
Hathaway formation
- Upper member, Phu; Lower member, Phl
- CONTACT NOT EXPOSED
- SG
San Gorgonio igneous-metamorphic complex

Pliocene-Pleistocene

Lower Pliocene(?)

QUATERNARY

TERTIARY

MESOZOIC AND OLDER

- Contact
Dashed where approximately located
- Fault, showing dip
Dashed where approximately located; dotted where concealed. U, upthrown side; D, downthrown side
- Syncline
Dashed where approximately located; dotted where concealed
- 87
Strike and dip of beds
- 78
Strike and dip of overturned beds