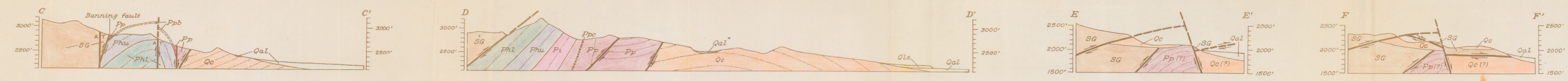
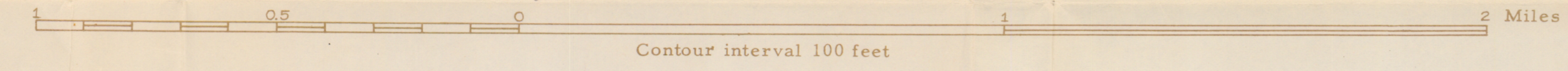


Base map modified from Corps of Engineers, U. S. Army, 1943-1944

Geology by C. R. Allen, 1952-1954

GEOLOGIC MAP AND STRUCTURE SECTIONS OF THE FOOTHILLS BETWEEN MILLARD AND COTTONWOOD CANYONS



EXPLANATION

- Qal Alluvium UNCONFORMITY
- Qls Landslide material UNCONFORMITY
- Qc Fanlomerates and terrace gravels of unknown correlation UNCONFORMITY
- Qh Heights fanlomerate UNCONFORMITY
- Qc Cabazon fanlomerate UNCONFORMITY
- Painted Hill formation
Resistant conglomerate bed, Ppc; interlayered flows of olivine basalt, Ppb, and associated dikes of olivine basalt, Ppd.
- Pi Imperial formation
- Hathaway formation
Upper member, Phu; lower member, Phl UNCONFORMITY
- San Geronimo igneous-metamorphic complex

QUATERNARY

Middle Pliocene(?)

Lower Pliocene(?)

TERTIARY

MESOZOIC AND OLDER

--- Contact approximately located
 - - - Fault, showing dip
 Dashed where approximately located; dotted where concealed; U, upthrust side; D, downthrust side.
 - - - Thrust fault
 Dashed where approximately located; dotted where concealed. 1, overthrust plane.
 - - - Anticline, showing plunge
 Dashed where approximately located; dotted where concealed.
 - - - Syncline
 Dashed where approximately located; dotted where concealed.

90° Overturned anticline
 87° Overturned syncline

Strike of vertical beds Strike and dip of beds

Strike and dip of overturned beds