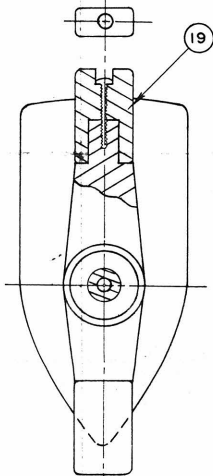


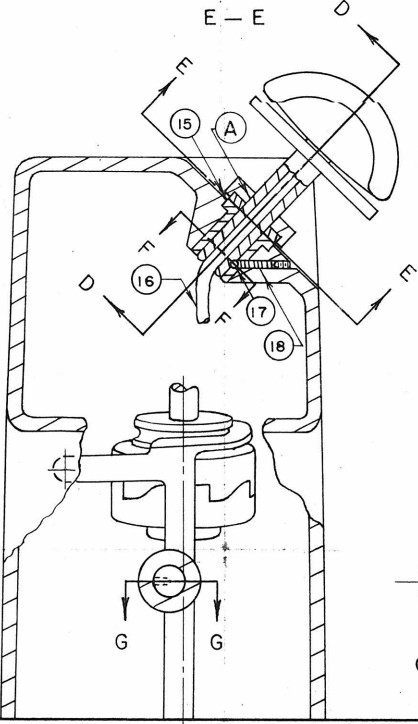
- (17) STEEL BALL
- (18) COIL SPRING
- (19) PHENOLIC HANDLE



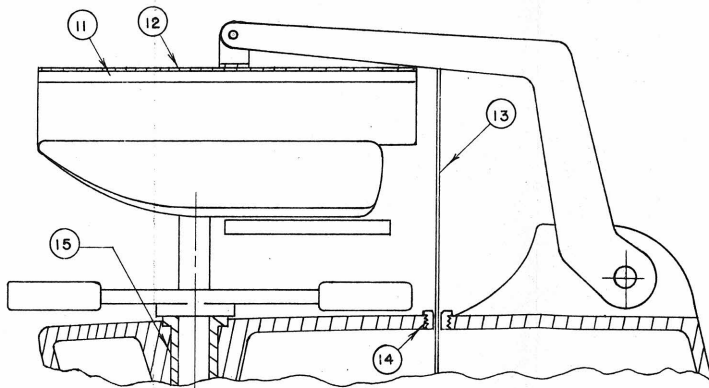
F—F FULL SCALE



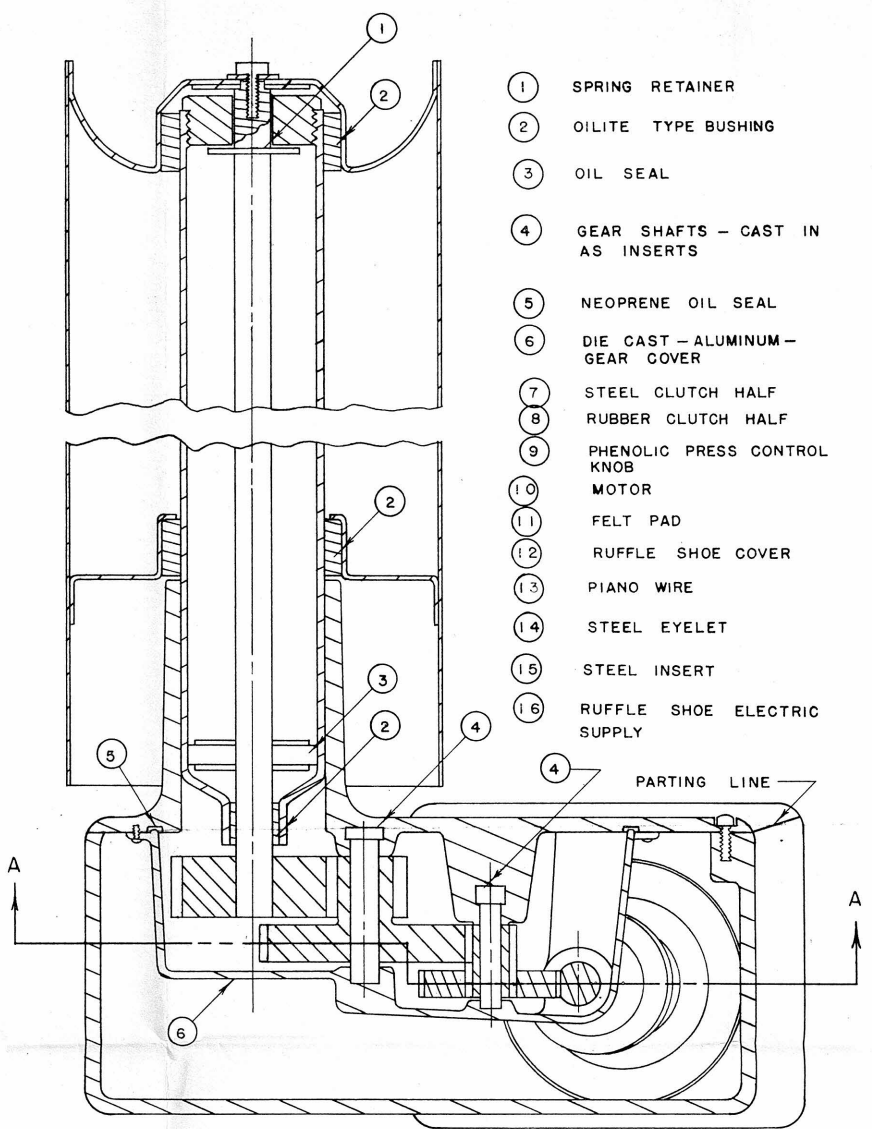
E—E



C—C

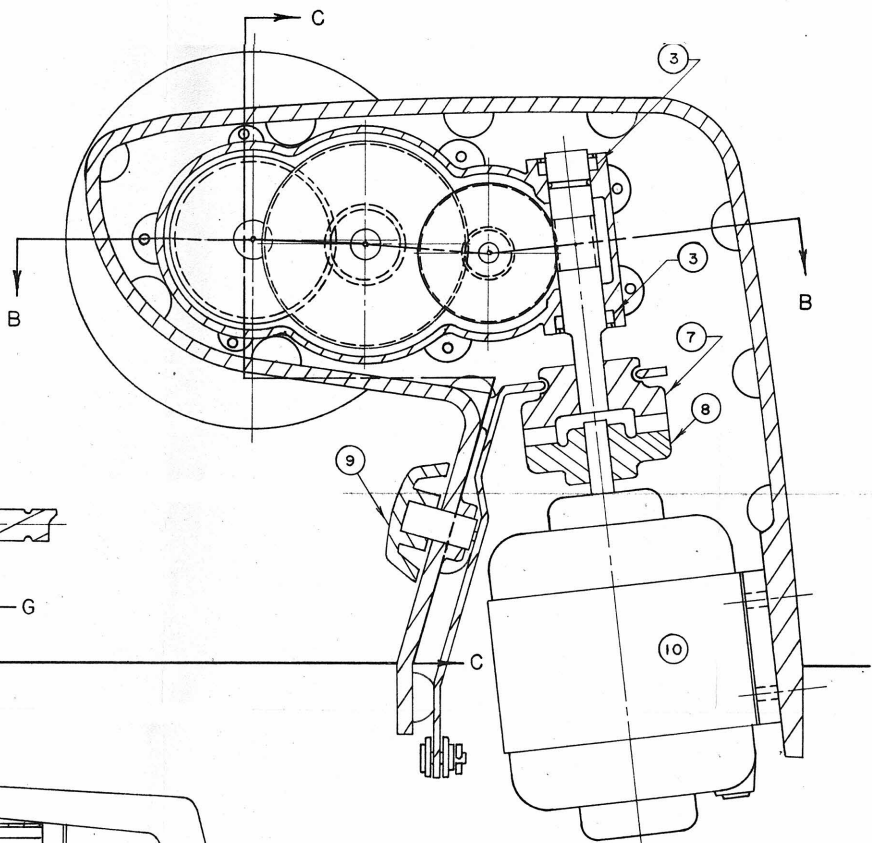


D—D  
RUFFLE SHOE COVER ASSEMBLY



B—B  
GEAR HOUSING — ALUMINUM DIE CASTING

- (1) SPRING RETAINER
- (2) OILITE TYPE BUSHING
- (3) OIL SEAL
- (4) GEAR SHAFTS — CAST IN AS INSERTS
- (5) NEOPRENE OIL SEAL
- (6) DIE CAST — ALUMINUM — GEAR COVER
- (7) STEEL CLUTCH HALF
- (8) RUBBER CLUTCH HALF
- (9) PHENOLIC PRESS CONTROL KNOB
- (10) MOTOR
- (11) FELT PAD
- (12) RUFFLE SHOE COVER
- (13) PIANO WIRE
- (14) STEEL EYELET
- (15) STEEL INSERT
- (16) RUFFLE SHOE ELECTRIC SUPPLY



A—A

FIGURE 23 GEAR HOUSING & ROLL ASSEMBLY

HALF SCALE