

Hard steel fulcrum riveted to I-beam with 1/4" rivets

Steel plate 2 1/4" x 1/2" x 8"
5.5 lb. I-Beam 3" deep

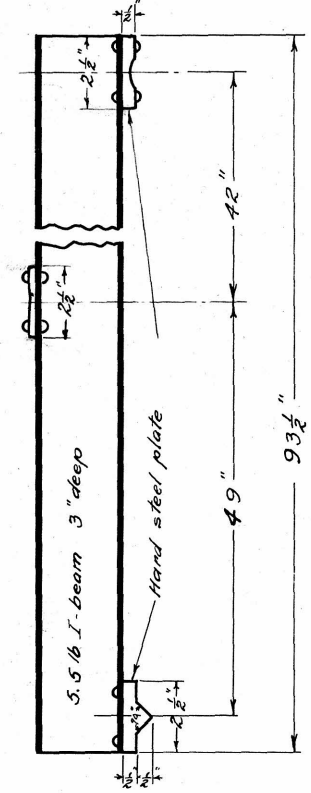
7.5 lb. I-Beam 4" deep
Rivets 1/2" except where specified.

Driving fit for 1 3/4" dia. pin.

22 1/4" 7.5 lb. I-Beam 4" deep
8" drill

Built-up with 1/8" plate steel
x 2 3/8"

SECTION A-B



CROSS BEAM
1- Required material steel.

DRAW BAR FRAME ASSEMBLY

1- Required

DRAWING N° 11

DRAW BAR FRAME ASSEMBLY

AUTO TESTING PLANT

THROOP COLLEGE OF TECHNOLOGY

Pasadena California

Scale 1/4" = 1" May 5, 14.

Drawn and traced by H.B. Gerckens.