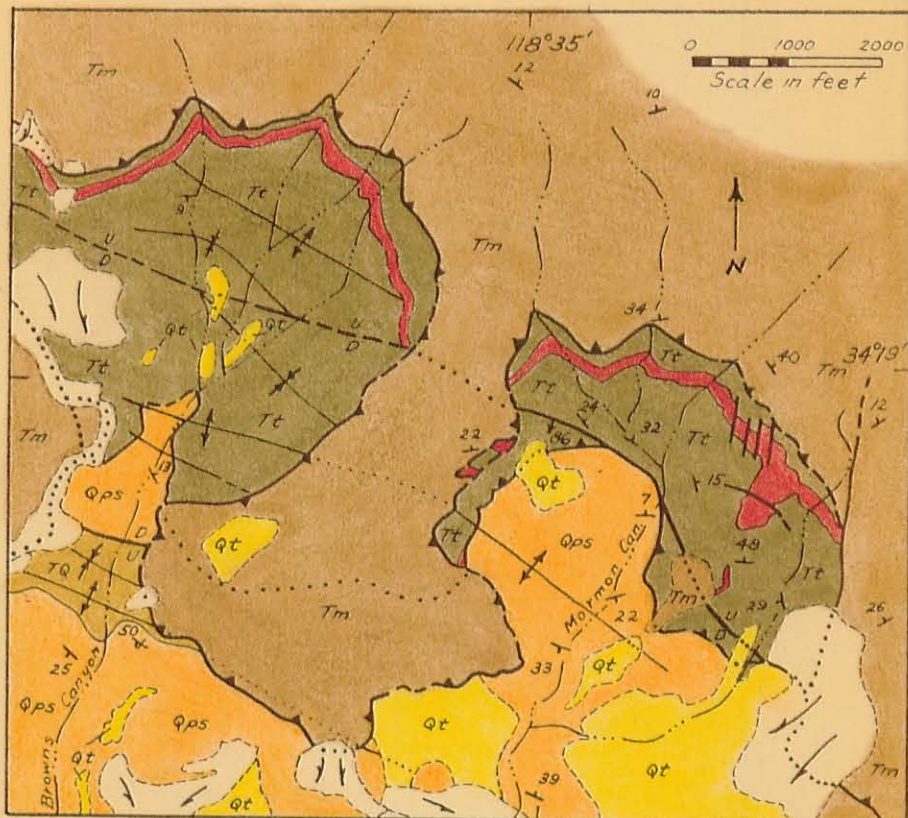


Eaton - gr - 1957



Geology by W.C. Bishop

SYMBOLS

- Fault, showing relative movement
- Approximate location of fault
- Concealed fault
- Thrust fault
- Formational contact
- Margin of unconsolidated sediments

SEDIMENTARY ROCKS

Recent
Pleistocene
Pliocene
Miocene
Middle Miocene Upper Miocene

- Landslide mass
- Quaternary terrace deposit
- Saugus formation
- Pico formation
- Modelo formation
- Topanga formation

IGNEOUS ROCKS

- Olivine diabase

PLATE II. GEOLOGIC MAP OF THE MIOCENE VOLCANIC ROCKS IN THE EASTERN SANTA SUSANA MOUNTAINS. (Geology from (Bishop, 1950.) For location of this area relative to the Los Angeles basin see Figure I or Plates VII and VIII.