

SEDIMENTARY ROCKS		IGNEOUS ROCKS	
Qtf	Talus and artificial fill, undivided	Tvu	Volcanic rocks, undivided
Qls	Landslide or slump mass	Tvb	Olivine basalt
Qsl	Slide or tectonic breccia	Tvfi	Intrusive breccia of basaltic andesite
Qal	Alluvium	Tvba	Olivine-bearing basaltic andesite
Qm	Mudflow deposit	Tvf	Fragmental basaltic andesite; includes pyroclastic rocks, mudflows, and avalanche breccias of Miocene age
qt	Alluvial terrace remnant	pTbc	Pre-Tertiary basement complex
Qat	Alluvium & alluvial terrace deposit, undivided		
Qps	Saugus formation		
Tm	Modelo formation, undivided		
Tms	Modelo sandstone and shale		
Tmc	Modelo conglomerate and sandstone		
Te	Topanga formation		
Tcu	Tertiary conglomerate of unknown age; that in Figure A may be middle Miocene, that in Figure D may be Pliocene.		

FOSSIL LOCALITIES

M Microfossil locality; M=Mohman, L=Luisian, etc. Identifications by paleontologists of Standard Oil of Calif.

t Megafossil locality. t=Topanga fauna. Identifications by L.G. Hertlein.

SYMBOLS

--- Fault, dashed where approximately located
 - - - - - Concealed fault

- - - - - Contact, dashed where approximately located
 - - - - - Alluvial contact

37 Flow foliation of volcanic rocks
 48 Platy parting of volcanic rocks

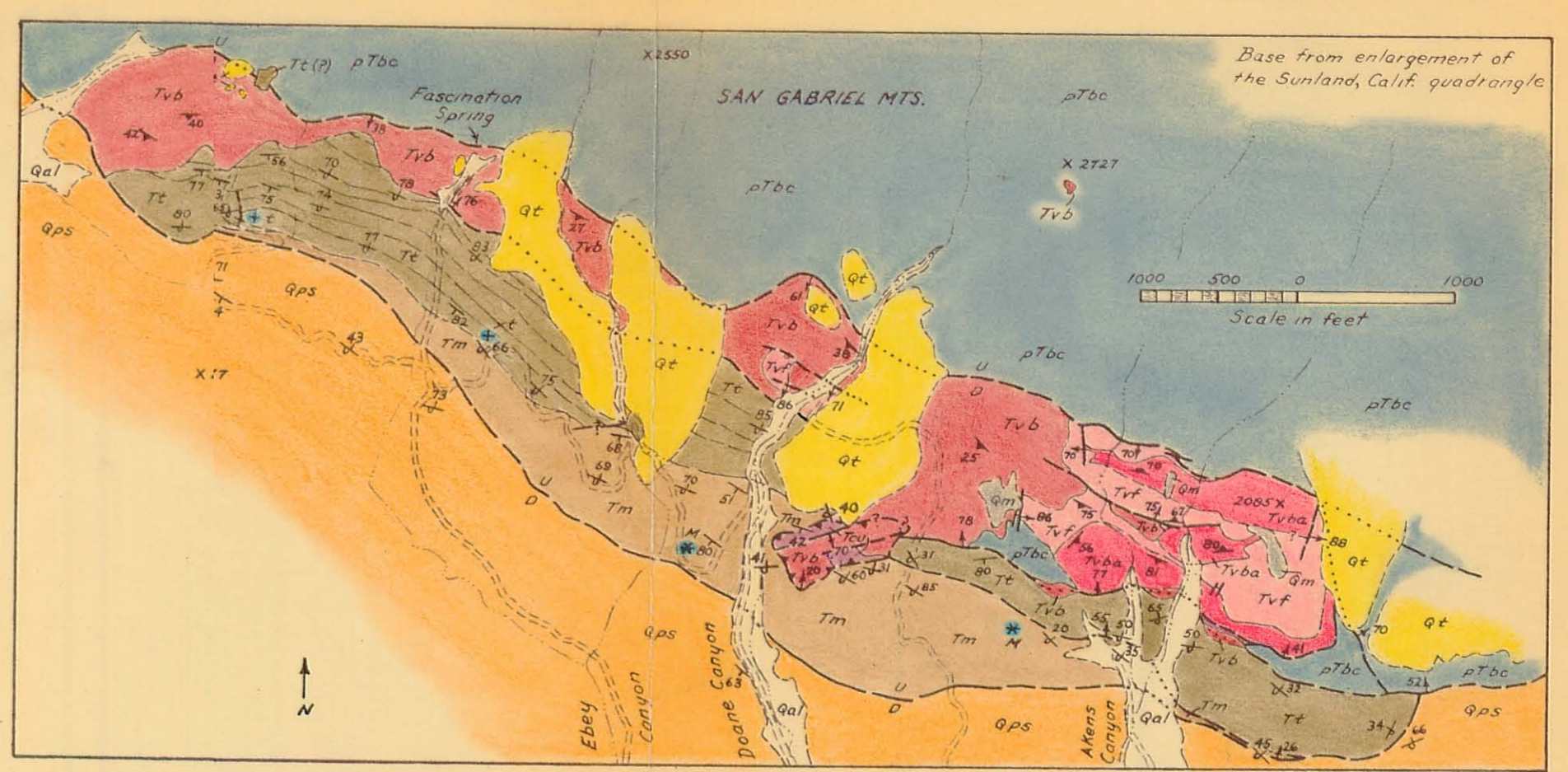
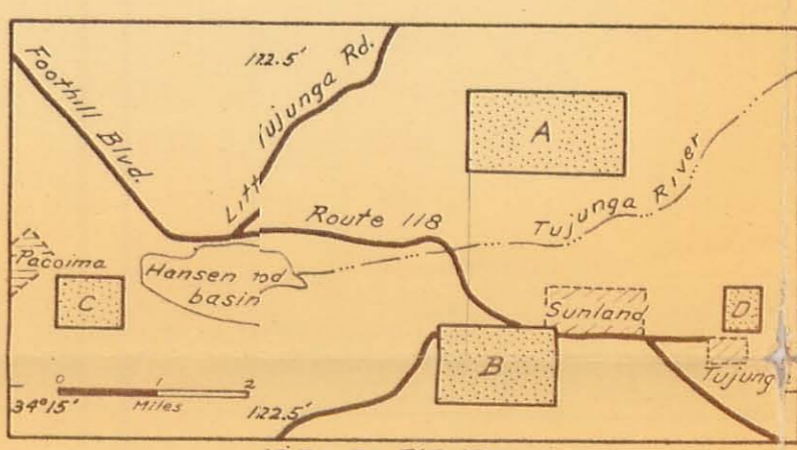


FIGURE A



INDEX TO FIGURES

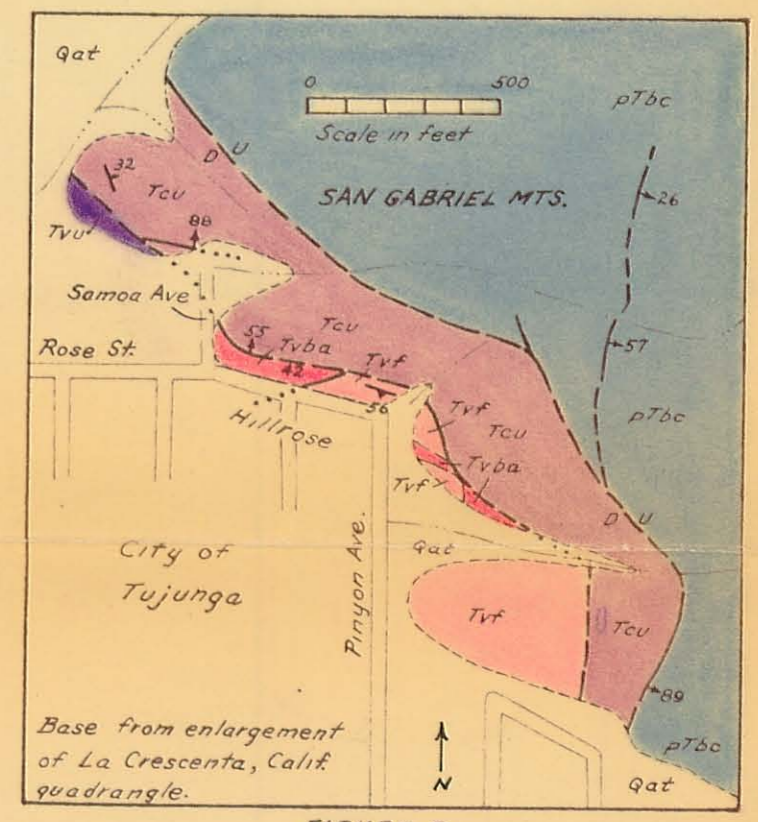


FIGURE D

PLATE I. GEOLOGIC MAP OF THE MIOCENE VOLCANIC ROCKS NEAR SUNLAND, CALIFORNIA.

Geology by G.R. Eaton, 1954; southwestern one-third of Figure C by R.H. Jahns.

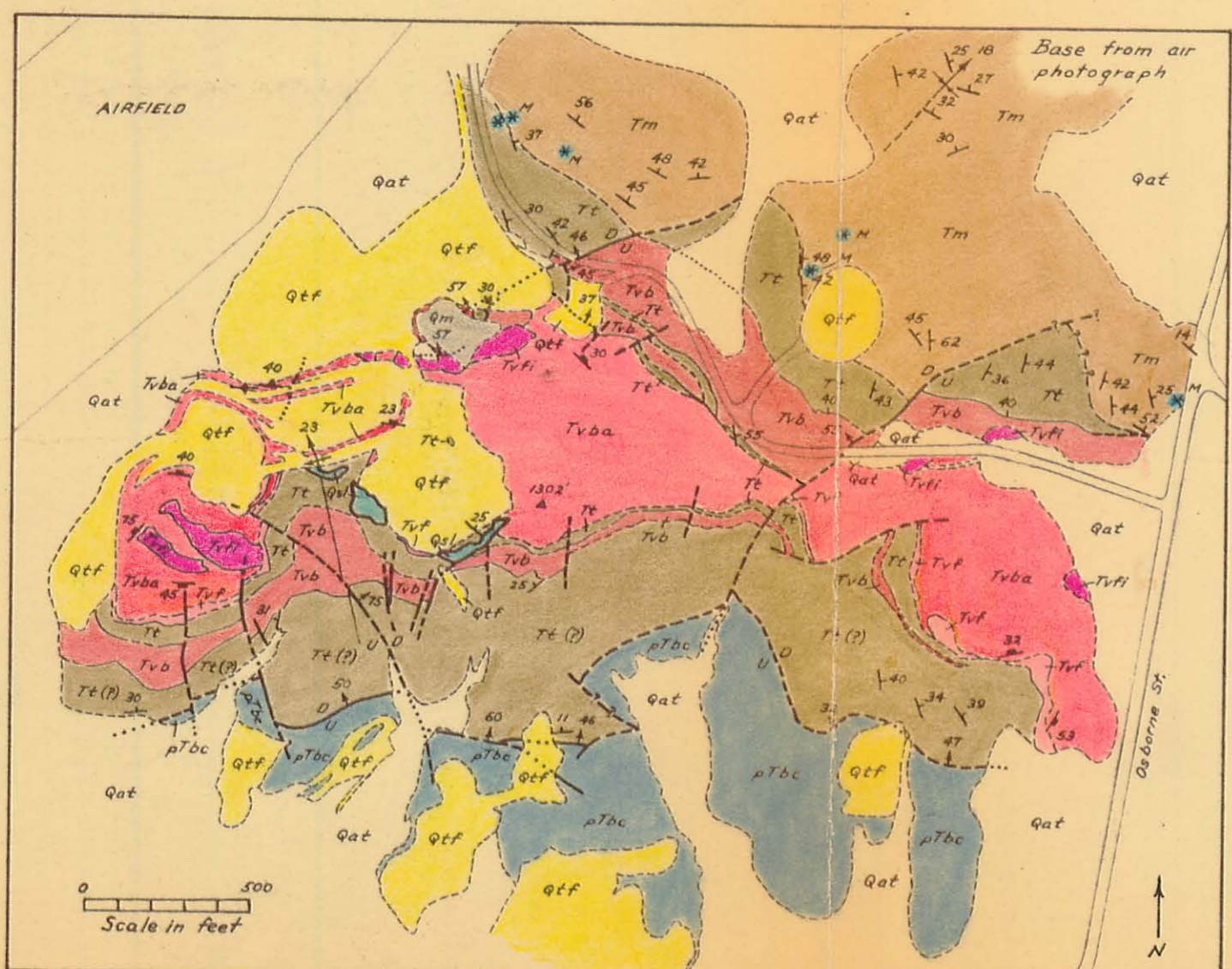


FIGURE C

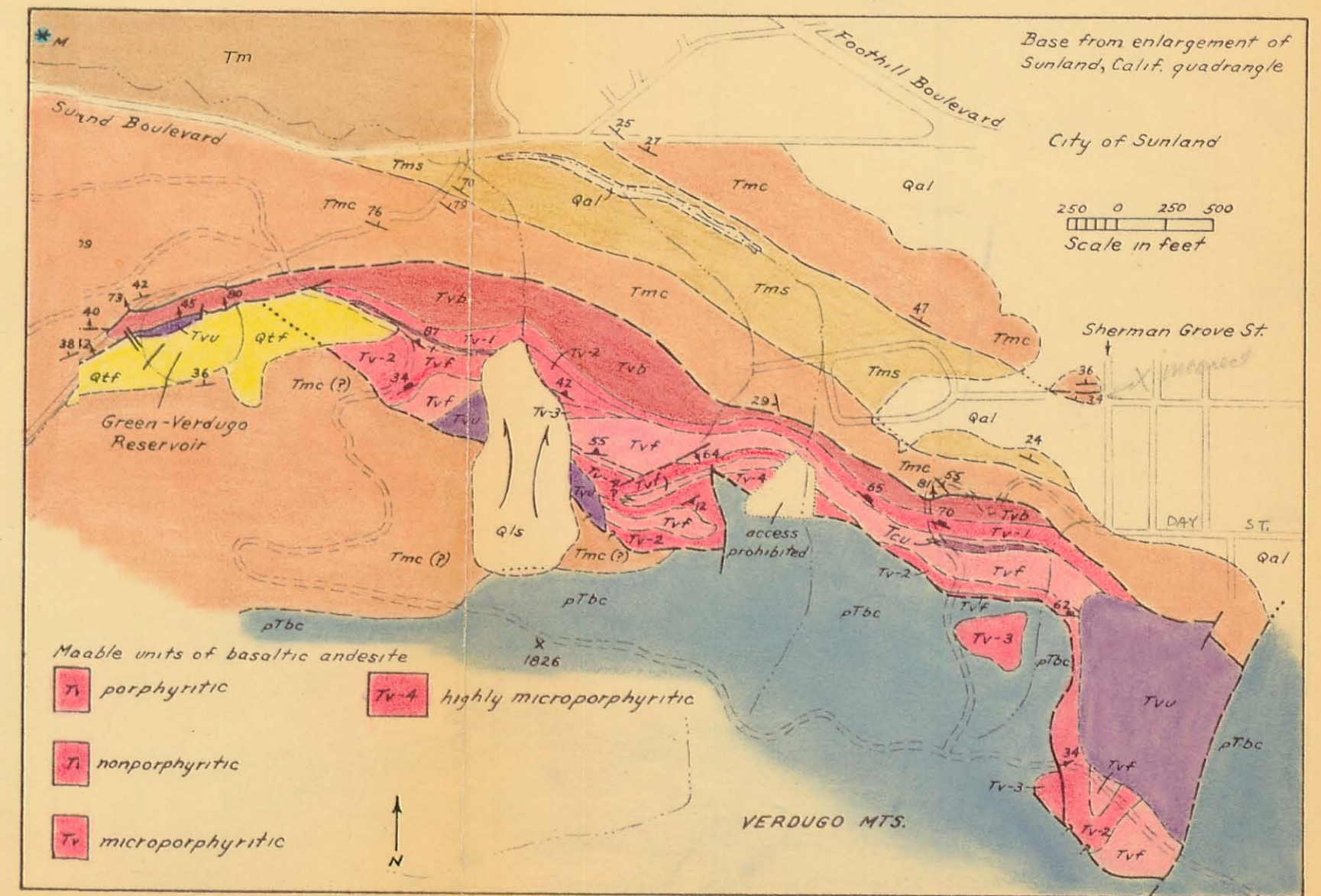


FIGURE B