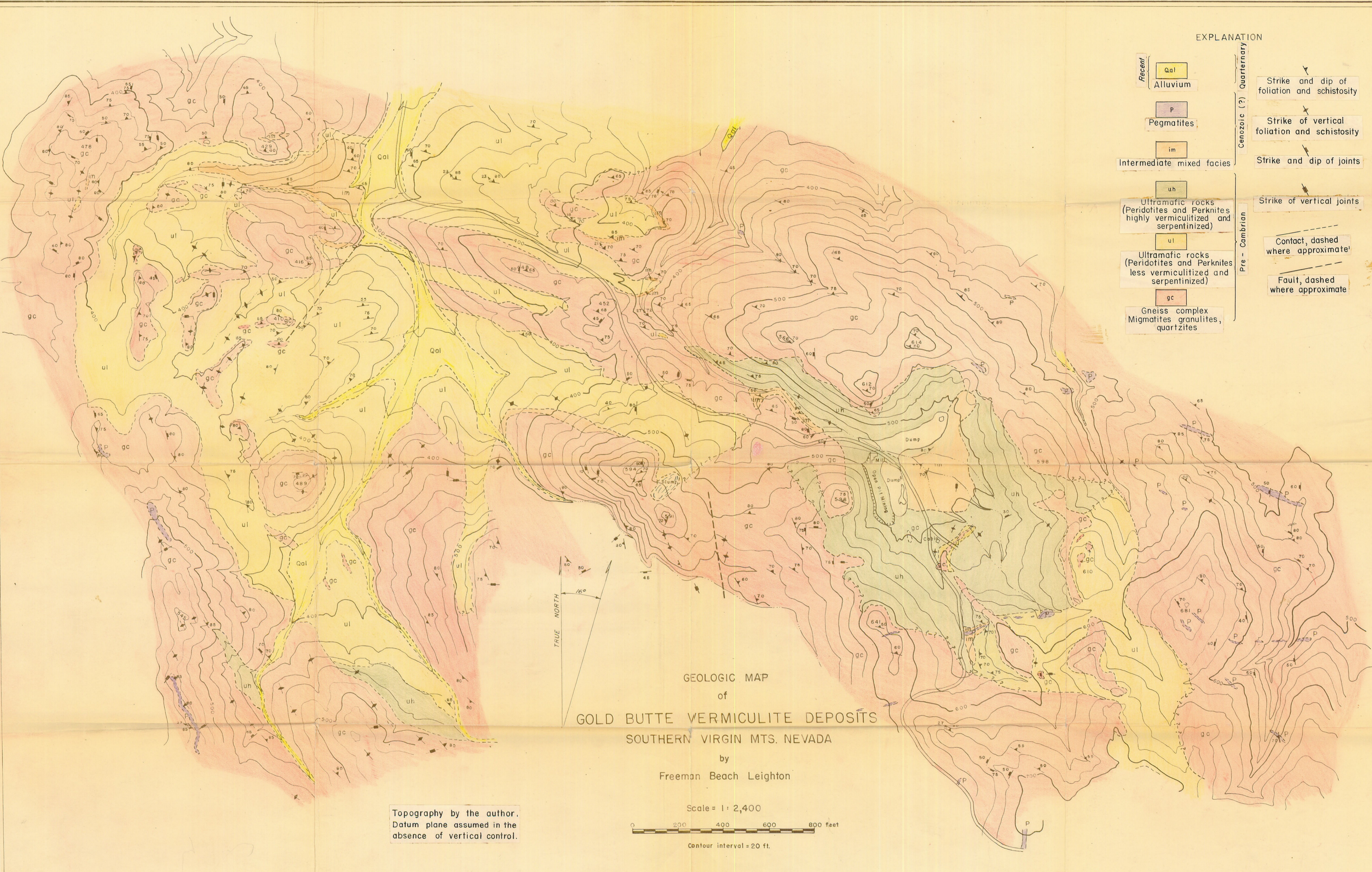


EXPLANATION

- | | | | | |
|----------------|---|----------------|--|--------------------------------------|
| Recent | Qal | Quaternary | Strike and dip of foliation and schistosity | |
| | Alluvium | | | |
| Cenozoic (?) | P | Cenozoic (?) | Strike of vertical foliation and schistosity | |
| | Pegmatites | | | |
| | im | | | Strike and dip of joints |
| Pre - Cambrian | uh | Pre - Cambrian | Strike of vertical joints | |
| | Ultramafic rocks
(Peridotites and Perknites
highly vermiculitized and
serpentinized) | | | |
| | ul | | | Contact, dashed
where approximate |
| | Ultramafic rocks
(Peridotites and Perknites
less vermiculitized and
serpentinized) | | | Fault, dashed
where approximate |
| | gc | | | |
| | Gneiss complex
Migmatites granulites,
quartzites | | | |



GEOLOGIC MAP
of
GOLD BUTTE VERMICULITE DEPOSITS
SOUTHERN VIRGIN MTS. NEVADA
by
Freeman Beach Leighton

Scale = 1 : 2,400
0 200 400 600 800 feet
Contour interval = 20 ft.

Topography by the author.
Datum plane assumed in the
absence of vertical control.