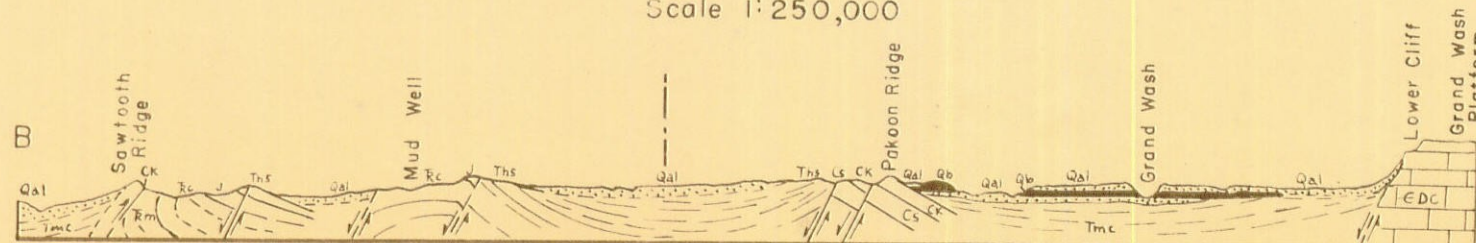


Geologic map and section across northern portion of Southern Virgin Mountains, from Virgin River to Upper Grand Wash Cliff. (From C. R. Longwell, 1928, plate I.)

Scale 1:250,000



EXPLANATION

| Geological Period | Rock Unit / Feature | Symbol |
|-------------------------|---|--------|
| Recent and Pleistocene | Sedimentary Rocks | Qal |
| | Alluvial deposits | Qal |
| Tertiary | Unconformity | — |
| | Muddy Creek formation | Tmc |
| | Unconformity | — |
| | Ths | Ths |
| Jurassic(?) | Horse Spring formation (Including Overton conglomerate in places) | Ths |
| | Great Unconformity | — |
| Triassic | J | J |
| | Cross-bedded sandstone | J |
| | Chinle formation (Underlain by Shinarump conglomerate probably Upper Triassic) | Rc |
| Lower Triassic | Unconformity | — |
| | Rm | Rm |
| Permian | Moenkopi formation | Rm |
| | Unconformity | — |
| Carboniferous | Ck | Ck |
| | Kaibab limestone (With some Cocomino sandstone at base in Grand Wash and Grand Wash cliffs) | Ck |
| | Unconformity | — |
| Pennsylvanian(?) | Cs | Cs |
| | Supai formation | Cs |
| Cambrian | Cc | Cc |
| | Callville limestone | Cc |
| Cambrian(?) and younger | Emb | Emb |
| | Muav (?) limestone, Bright Angel (?) shale, and Tapeats (?) sandstone | Emb |
| Pre-Cambrian | EDC | EDC |
| | Paleozoic undifferentiated METAMORPHIC ROCKS | EDC |
| Quaternary and Pliocene | gsg | gsg |
| | Gneiss, schist, and granite | gsg |
| IGNEOUS ROCKS | Qb | Qb |
| | Basaltic flows | Qb |

