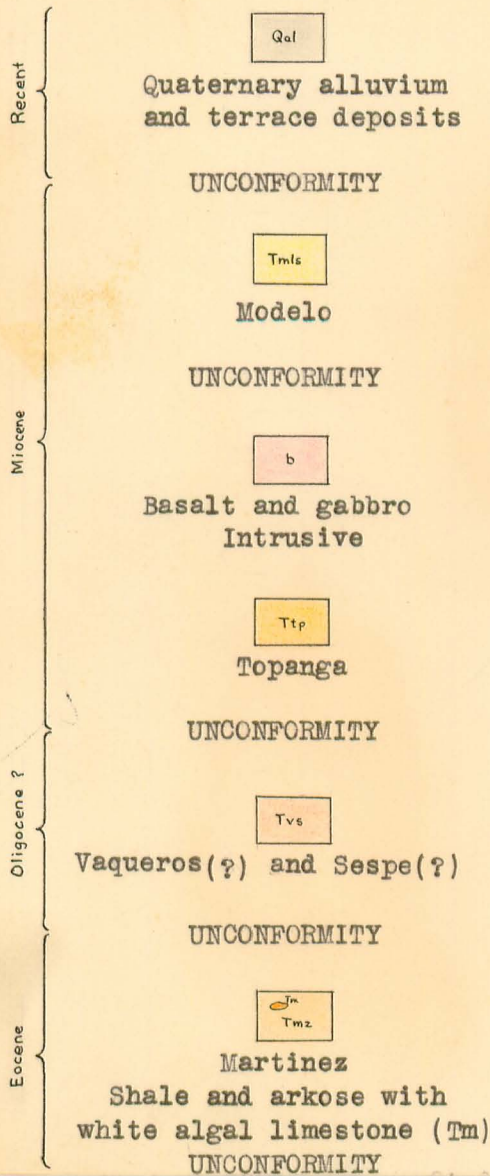
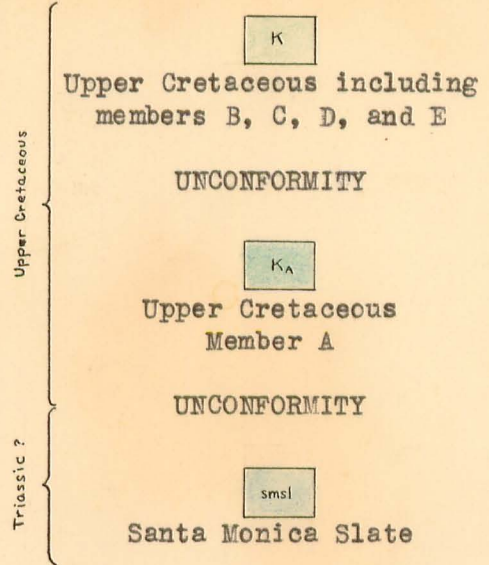
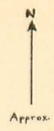
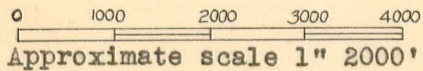


EXPLANATION



CRETACEOUS AND EOCENE GEOLOGY
OF A PORTION OF
THE SANTA MONICA MOUNTAINS
Geology by H. D. B. Wilson
1941



- ↘ Strike and dip of strata
- x 17 Fossil locality
- Contact, accurately located
- - - Contact, approximately located
- Fault, accurately located
- - - Fault, approximately located
- Bedding