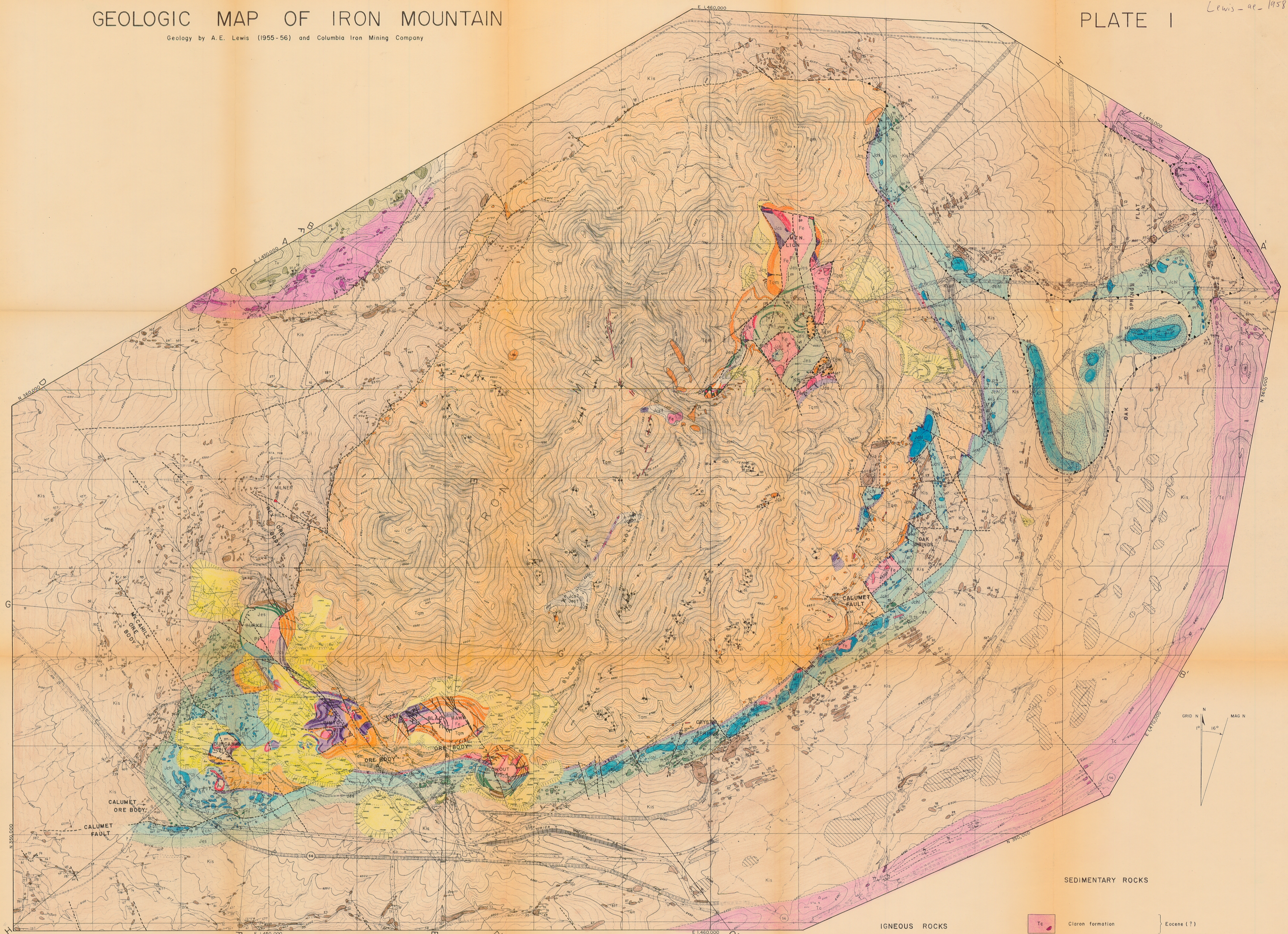


# GEOLOGIC MAP OF IRON MOUNTAIN

Geology by A.E. Lewis (1955-56) and Columbia Iron Mining Company

PLATE I

Lewis - ae - 1958



## EXPLANATION

SCALE: 1 INCH = 825 FEET

Contour Interval: 10 Feet

- |    |   |    |  |   |
|----|---|----|--|---|
| 20 | Strike and dip of beds, question marks indicate degree of doubt | 70 | Strike and dip of joints   | Contact, dashed where approximately located         |
| 80 | Strike and dip of overturned beds                               | 50 | Strike of vertical joints  | Inferred contact, dotted where covered              |
| 40 | Strike of vertical beds   | 30 | Joint or fissure filled with mineralization, showing dip and approximate thickness | Outcrop   |
| 30 | Strike of beds, determined from air photos                      | 25 | Foliation; alignment of minerals in dikes  | Float, shown only in critical areas                 |
| 20 | Horizontal beds   | 20 | Foliation in volcanic rocks  | Outcrop or distinctive soil, mapped from air photos |
|    |   | 15 | Fault, showing dip, dashed where approximately located                             | Spring  |
|    |   | 10 | Inferred fault, dotted where covered   | Drill hole  |
|    |   | 5  | Early intrusive thrust fault   |   |

## IGNEOUS ROCKS

- |           |                           |
|-----------|---------------------------|
| INTRUSIVE |                           |
| Tqm       | Quartz monzonite porphyry |
| EXTRUSIVE |                           |
| Tv        | Volcanic rocks            |
| Fe        | Iron mineralization       |

## SEDIMENTARY ROCKS

- |                |                            |                      |
|----------------|----------------------------|----------------------|
| Tc             | Claron formation           | Eocene (?)           |
| Unconformity ? |                            |                      |
| Kis            | Iron Springs formation     | Upper (?) Cretaceous |
| Kmc            | Marshall Creek breccia     |                      |
| Unconformity ? |                            |                      |
| Jes            | Entrada formation          | Jurassic             |
| Jch            | Homestake limestone member |                      |
| Jcs            | Sandy member               |                      |