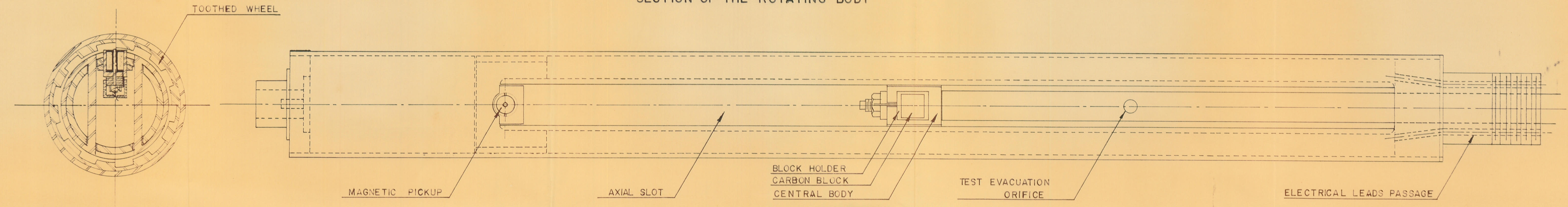
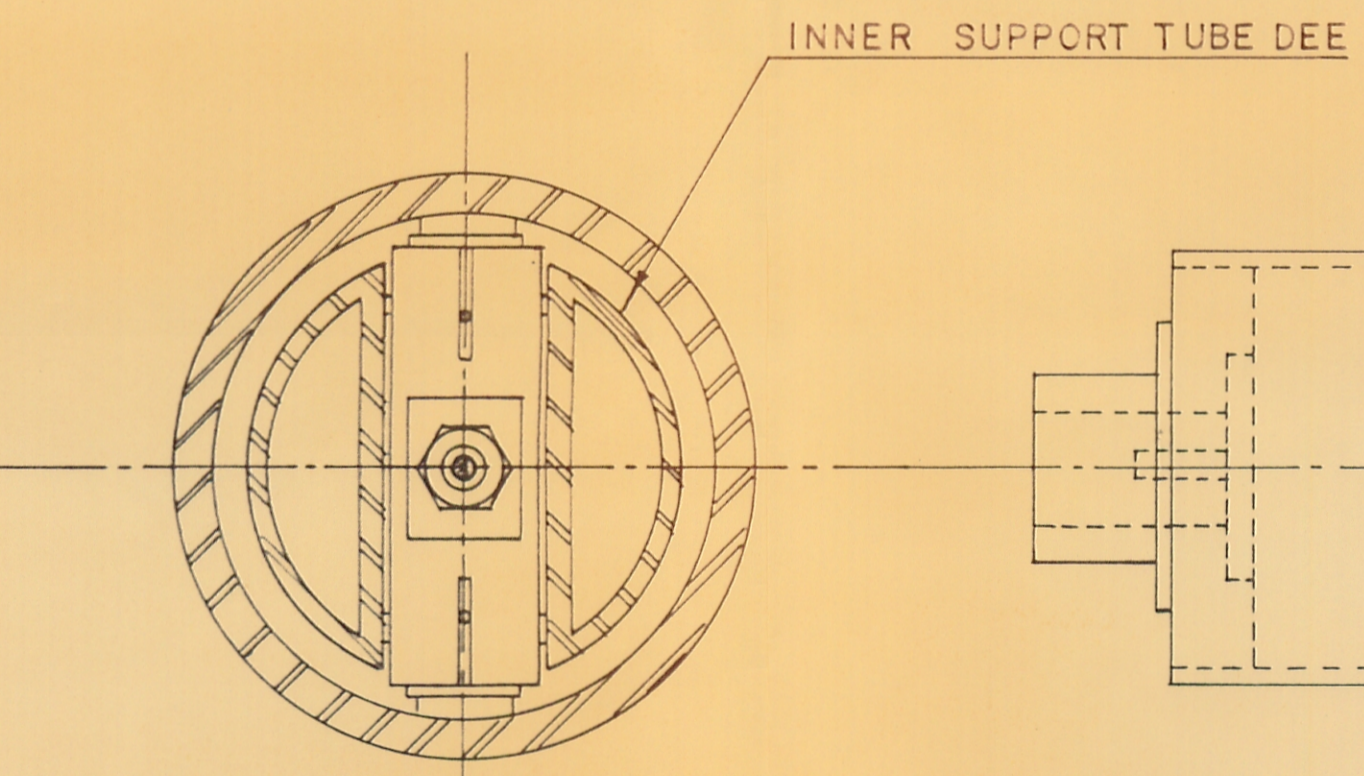


SECTION OF THE ROTATING BODY



INNER SUPPORT TUBE

SECTION A-A



SECTION B-B

Plate 1

							TOLERANCES ± .010 OR ± .015 UNLESS OTHERWISE NOTED	
LARSEN							SCALE 1" = 1"	
MATERIAL	FINISH	HEAT TREAT	DRAFTSMAN	CHECKED	APPROVED	ENGINEER	REF.	
GUGGENHEIM AERONAUTICAL LABORATORY CALIFORNIA INSTITUTE OF TECHNOLOGY							55-81-1	
SECTION OF THE ROTATING BODY AND INNER SUPPORT TUBE							DRAWING NO.	