

**EXPLANATION**

Qcg  
QUATERNARY (?) CONGLOMERATE

Pss  
FELDSPATHIC SANDSTONE AND ARGILLACEOUS LIMESTONE

Psh  
Psf  
DARK GRAY CALCAREOUS SHALE; fusulinid zone in lower two feet

Sh  
SHALES AND SILTSTONES  
inter-reef and off-reef facies

Rl  
Rr  
Ri  
DETITAL LIMESTONE (four members)

Zone 4  
Zone 3  
Zone 2  
Zone 1  
REEF LIMESTONE  
Algal, accretionary; recrystallized upper zone

Prl  
Prs  
FELDSPATHIC SANDSTONE AND DOLOMITIC LIMESTONE

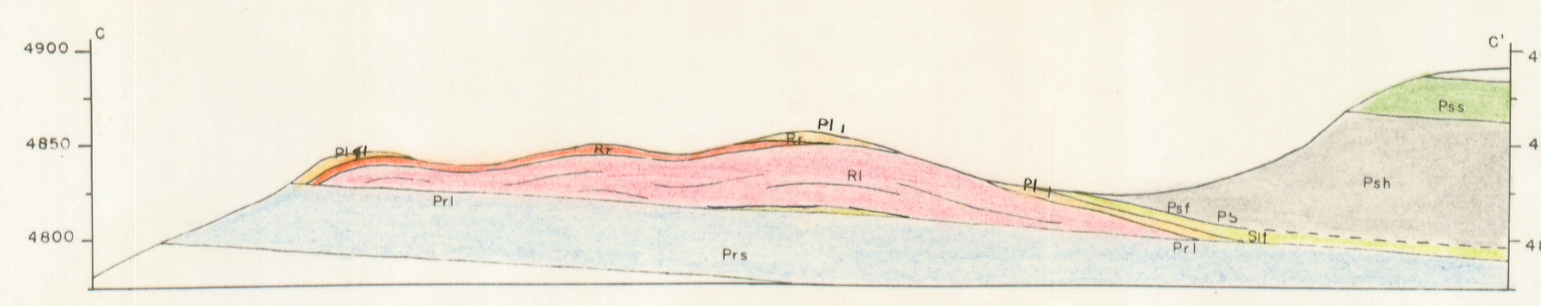
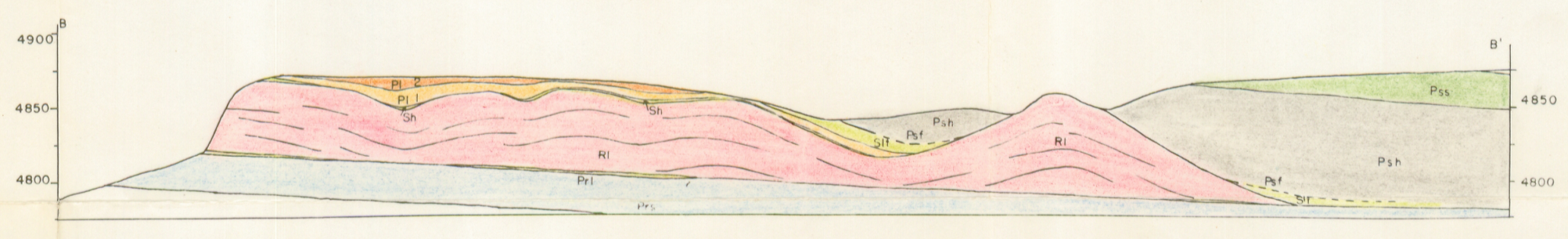
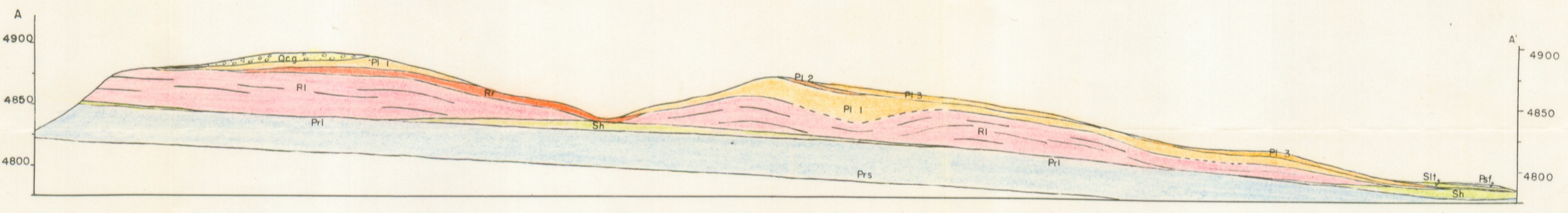
--- CONTACT; dashed where approximately located

- - - FAULT; dashed where approximately located

5  
STRIKE AND DIP  
stratified rocks and present surface of reefs

A-A'  
LOCATION OF STRUCTURE SECTION

TRUE NORTH  
10° MAGNETIC NORTH



GEOLOGIC MAP AND STRUCTURE SECTIONS OF A REEF COMPLEX IN THE NORTHERNMOST

SACRAMENTO MOUNTAINS, NEW MEXICO

TOPOGRAPHY BY C. OTTE AND R. F. SCHMALZ  
GEOLOGY BY C. OTTE

ELEVATION ABOVE SEA LEVEL  
IS APPROXIMATE

