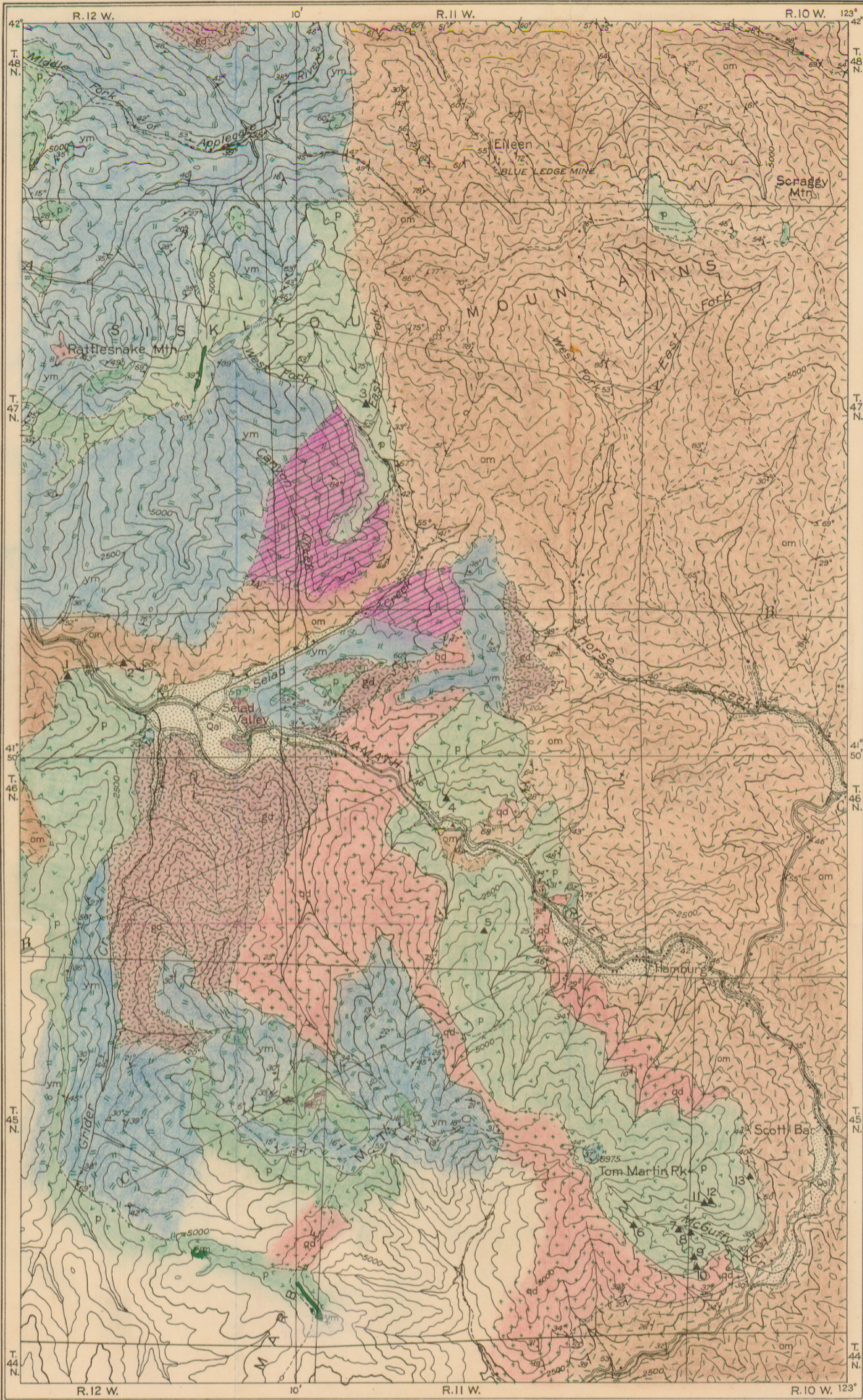


Smith - of 1943 Smith '43
plate 1

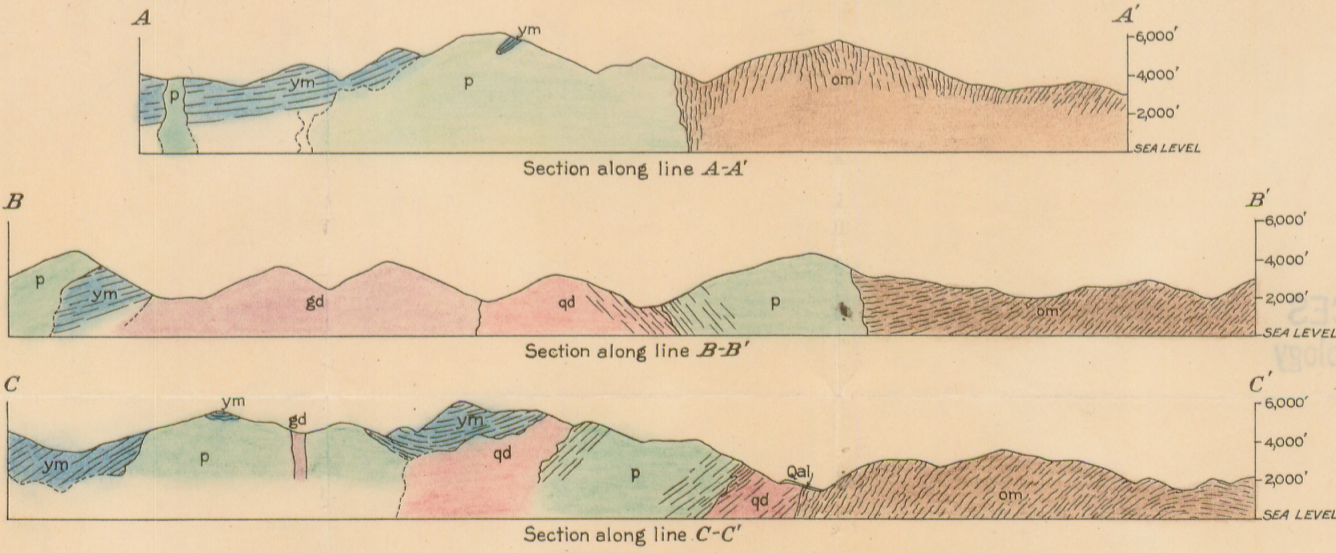


- EXPLANATION**
- QUATERNARY**
- Qal: Alluvium and gravel terraces (Gravel, sand, silt, and slightly water-worn colluvium)
- MESOZOIC (?)**
- gd: Granodiorite (Light-colored, medium-grained rock with plagioclase, quartz, orthoclase, and biotite)
 - p: Peridotite and serpentine (Mostly dunite, slightly serpentinized)
 - qd: Quartz diorite (Gray, medium-grained rock with plagioclase, quartz, hornblende, and biotite)
- PRE-MESOZOIC**
- METAMORPHIC ROCKS**
- ym: Younger metamorphic rocks and quartz diorite (Undifferentiated)
 - ym: Younger metamorphic rocks (Undifferentiated metavolcanics, shale, quartzite, and marble)
 - om: Older metamorphic rocks (Mica, chlorite, and hornblende schist)
- Contacts**
- Approximate contacts
 - Hidden contacts
 - Slide contacts
 - Strike and dip of bedding
 - Strike and dip of schistosity, foliation, and banding or doubtful bedding
 - Strike of vertical schistosity or foliation
 - Chromite mines and prospects

- LIST OF MINES AND PROSPECTS**
- 1 Barton claim
 - 2 (Name unknown)
 - 3 Seiad Creek deposit
 - 4 Dolbear mine
 - 5 Fairview group of claims
 - 6 Neptune (Napatama?) claim
 - 7 Liberty claim
 - 8 Jumbo claim
 - 9 Red Butte claim
 - 10 Octopus claim
 - 11 Black Spot No. 1
 - 12 Black Spot No. 2
 - 13 (Name unknown)

Base from U.S. Geological Survey topographic map

Geology by G.A. Rynearson and C.T. Smith



PRELIMINARY GEOLOGIC MAP AND SECTIONS OF THE NORTHEASTERN PART OF THE SEIAD QUADRANGLE, SISKIYOU COUNTY, CALIF.

