

EXPLANATION

Quaternary

- Qal: Alluvium: landslide, talus, fan, and valley-fill deposits
- Qt: Terrace deposits

Tertiary

- Ts: Torrey sand (P) member of La Jolla formation

Jurassic (P)

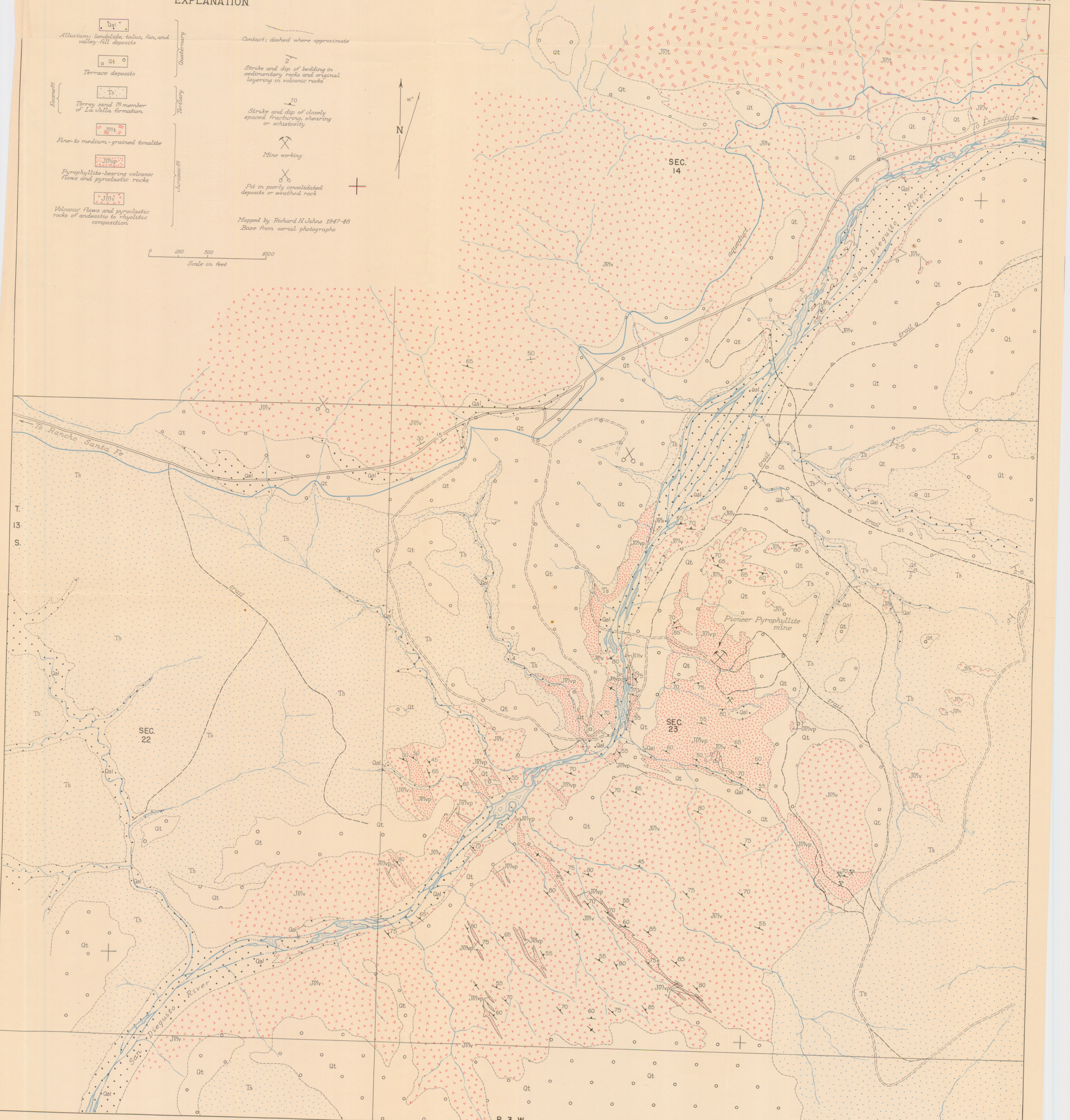
- JMt: Fine- to medium-grained tonalite
- JMvp: Pyrophyllite-bearing volcanic flows and pyroclastic rocks
- JTv: Volcanic flows and pyroclastic rocks of andesitic to rhyolitic composition

Structural Symbols:

- Contact; dashed where approximate
- Strike and dip of bedding in sedimentary rocks and original layering in volcanic rocks
- Strike and dip of closely spaced fracturing, shearing or schistosity
- Mine working
- Ft in poorly consolidated deposits or weathered rock

Mapped by Richard H. Johns 1947-48
Base from aerial photographs

Scale in feet: 0, 250, 500, 1000



GEOLOGIC MAP OF THE SAN DIEGUITO PYROPHYLLITE AREA, SAN DIEGO COUNTY, CALIFORNIA