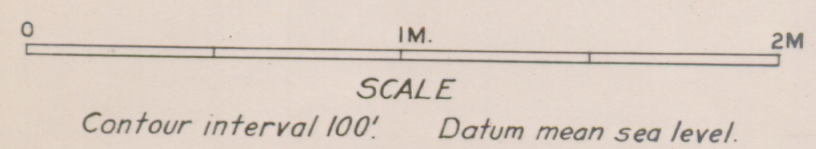


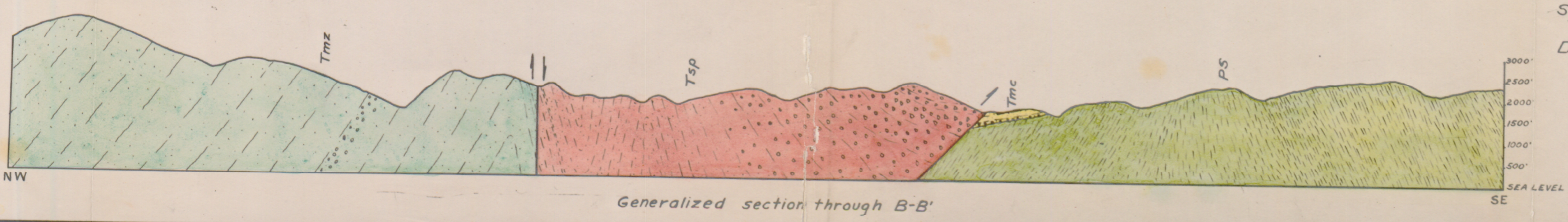
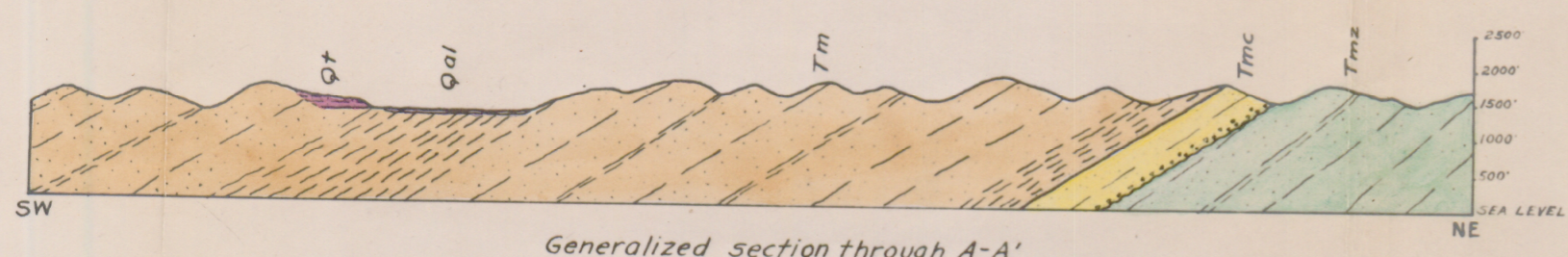
GEOLOGIC MAP OF A PORTION OF THE TEJON QUADRANGLE LOS ANGELES COUNTY, CALIFORNIA

Topography after United States Geological Survey's map.
Geology by Thomas Clements.
May 1929.



EXPLANATION

QUATERNARY		
Recent	Alluvium	Qal
Pleistocene	Terrace	Qt
	Saugus	Ts
TERTIARY		
Miocene	Modelo	Tm
	Mint Canyon	Tmc
Oligocene(?)	Sespe	Tsp
Eocene	Martinez(?)	Tmz
PRE-JURASSIC		
Metamorphics	Pelona Schist	PS
EXTRUSIVES		
Miocene(?)	Acidic Lava	Tr



Boundaries between geologic formations ————

Faults (solid line accurate; dotted line approximate) ————

Anticlines ————

Synclines ————

Dip of beds ————

Abandoned oil wells ○

Abandoned mines ×

Horizontal beds ⊕