

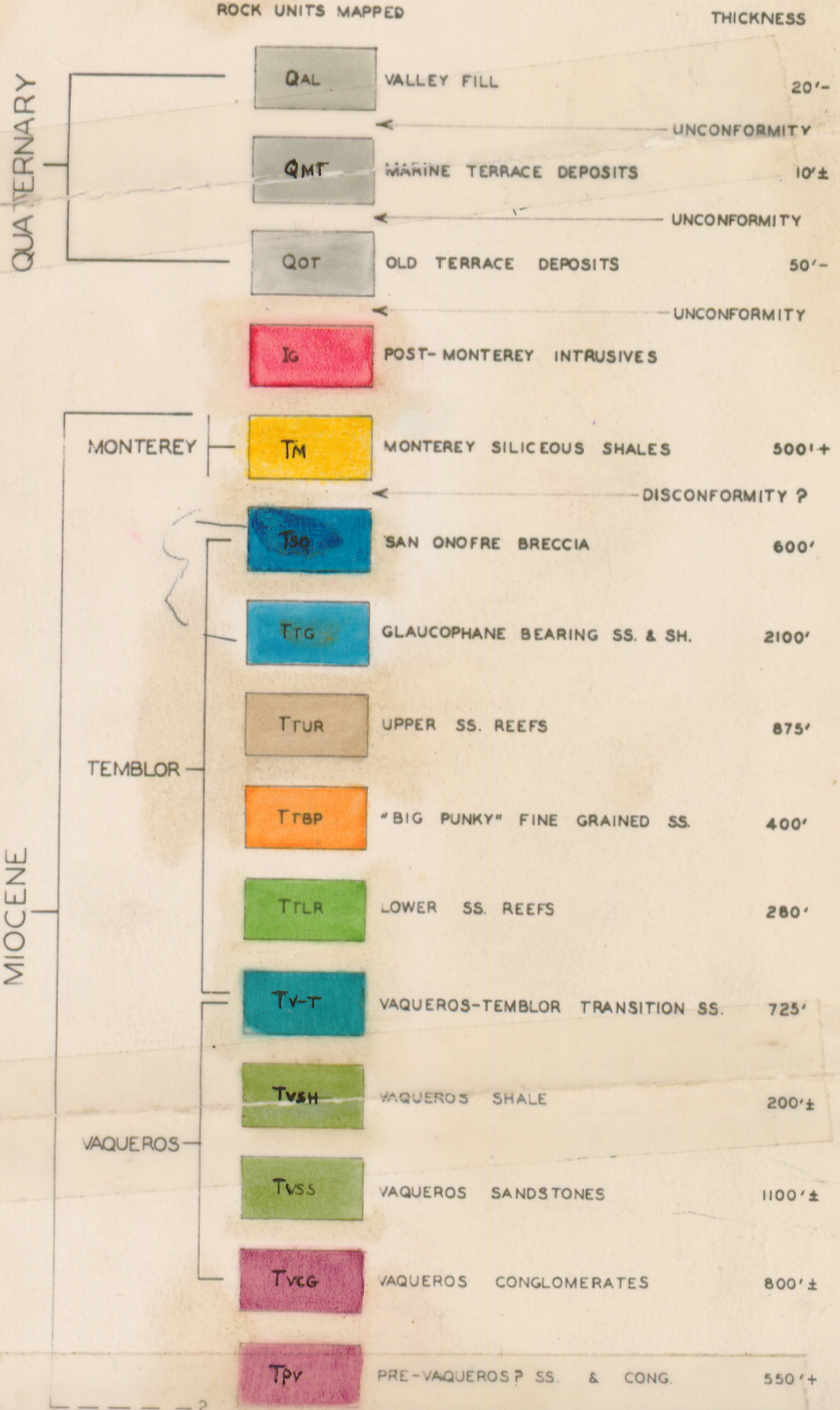
Bode -
F1-1934

29

GEOLOGIC MAP
OF A PART OF THE
SAN JOAQUIN HILLS
ORANGE COUNTY, CALIFORNIA

GEOLOGY BY F. D. BODE & W. A. FINDLAY

GEOLOGIC COLUMN & LEGEND



FAULTS: U=UP SIDE, D=DOWN.

ACCURATE APPROXIMATE PROBABLE

BOUNDARY BETWEEN GEOLOGIC UNITS
ACCURATE APPROXIMATE PROBABLE

ANTICLINE

SYNCLINE

STRUCTURE SECTION LINE

30° DIP & STRIKE

APPROXIMATE DIP & STRIKE

PROBABLE DIP & STRIKE