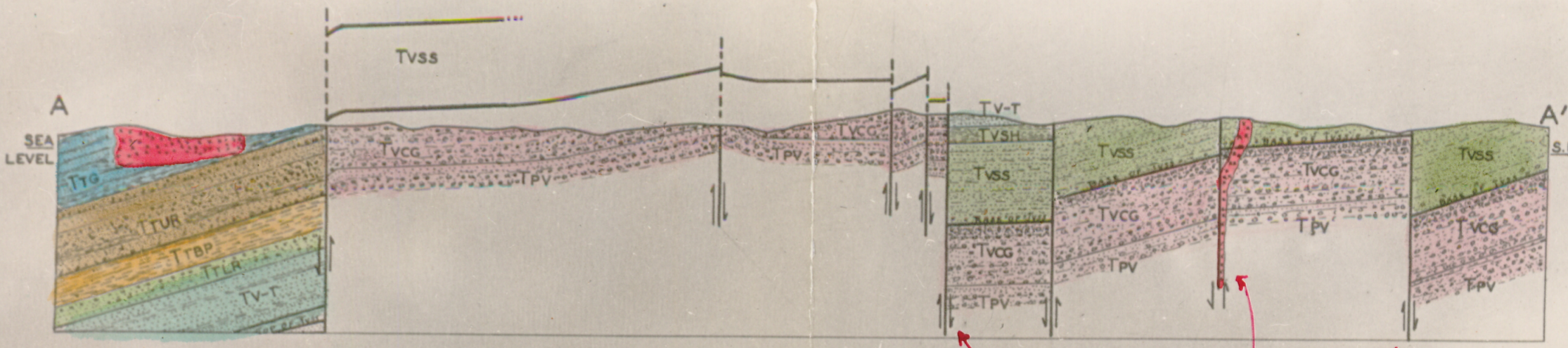
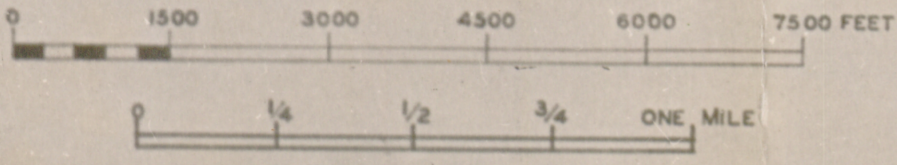
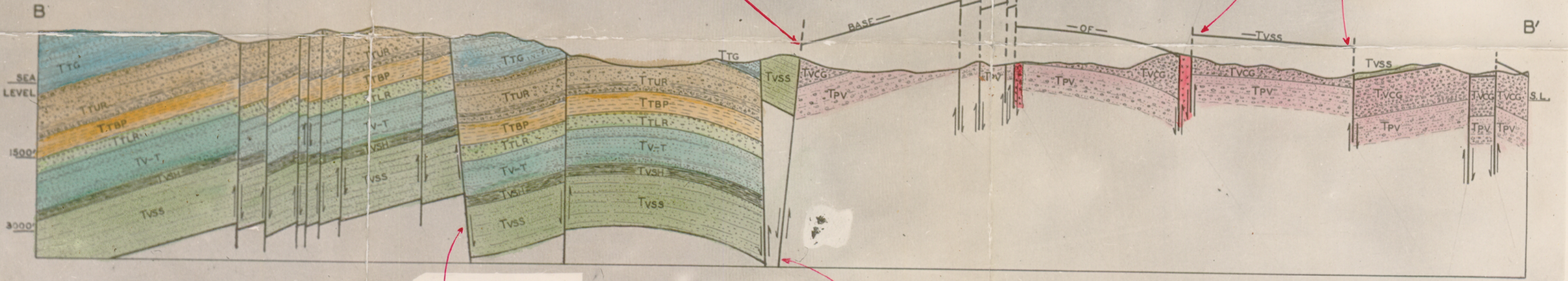


GEOLOGIC STRUCTURE SECTIONS
ACROSS PARTS OF THE
SAN JOAQUIN HILLS
ORANGE COUNTY CALIFORNIA

SCALE
VERTICAL & HORIZONTAL



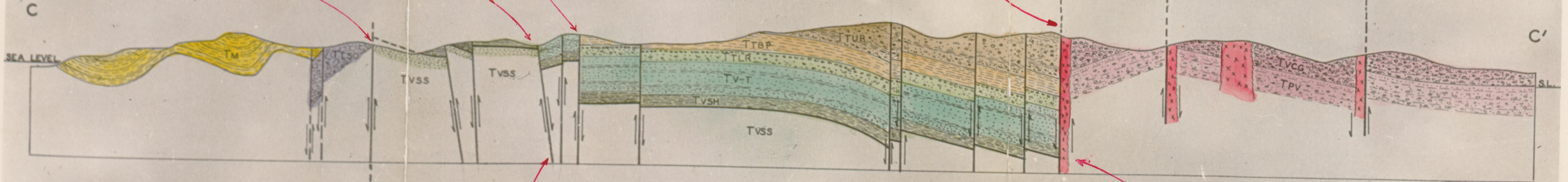
RED BED FAULTS



SIGNAL PEAK FAULT

IRVINE FAULT

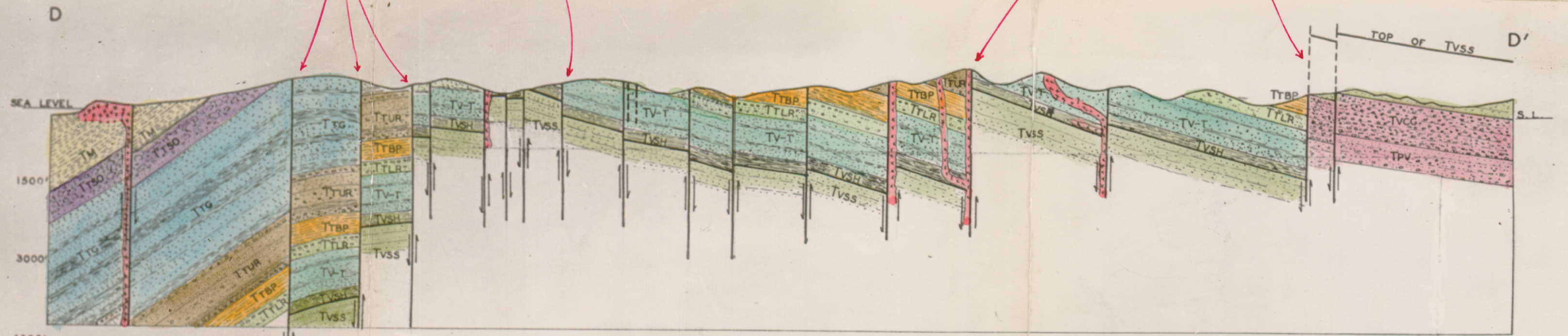
SAN ONOFRE FAULT
SLIVER FAULT



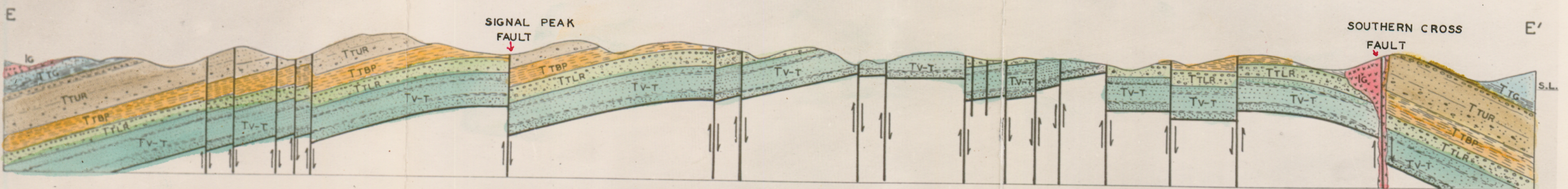
SLIVER FAULT

LAGUNA FAULT

PROBABLE DEPTH - TOP OF TVSS

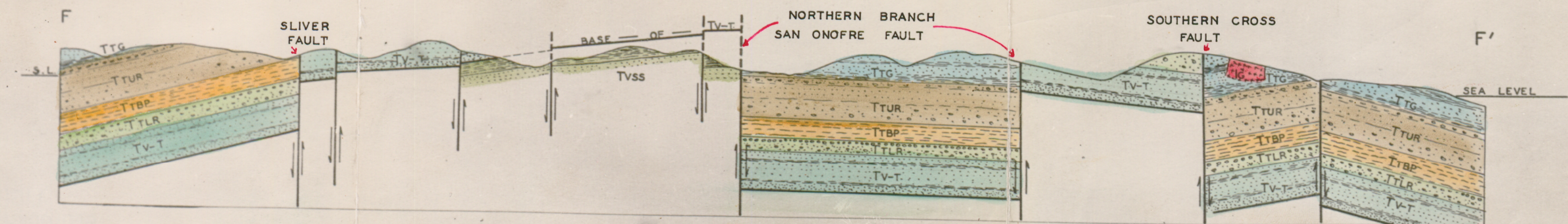


PROBABLE DEPTH - TOP OF TVSS



SIGNAL PEAK FAULT

SOUTHERN CROSS FAULT



SLIVER FAULT

NORTHERN BRANCH SAN ONOFRE FAULT

SOUTHERN CROSS FAULT

SEA LEVEL