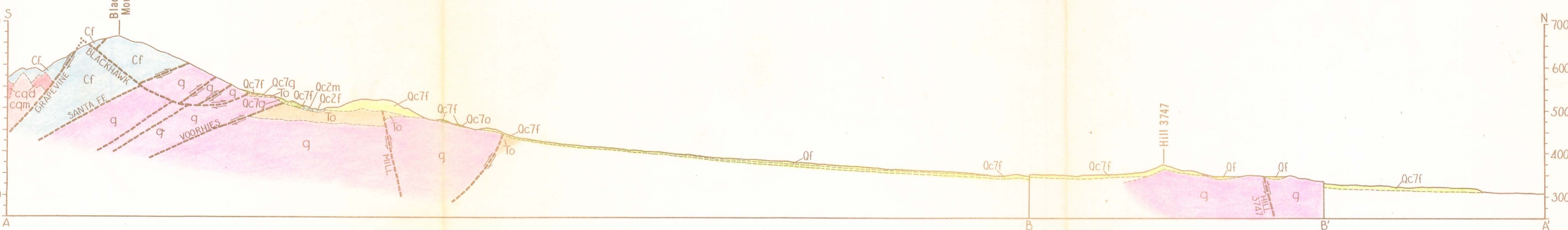


Geology by R. L. Shreve, 1957



Recent
 Alluvium
 Fan gravels, stream gravels, and alluvium, Qf;
 landslides, Qs.

Pleistocene (?)
 Qc7o
 Qc7f
 Qc7g
 Qc6
 Qc5
 Qc4g
 Qc4f
 Qc4m
 Qc3
 Qc2f
 Qc2g
 Qc1

Tertiary
 Cushman Springs formation
 Member 1: fanglomerate, Qc1. Member 2: Furnace limestone breccia, Qc2f; quartzite breccia, Qc2g. Member 3: fanglomerate, Qc3. Member 4: Furnace limestone breccia, Qc4f; Old Woman sandstone "breccia," Qc4g; "mixed breccia," Qc4m. Member 5: landslide debris, Qc5. Member 6: fanglomerate, Qc6. Member 7: Furnace limestone breccia, Qc7f; Old Woman sandstone "breccia," Qc7o; gneiss breccia, Qc7g; "mixed breccia," Qc7m.
 Old Woman sandstone
 UNCONFORMITY
 Cactus granite
 Quartz-monzonite, cqm; quartz-diorite, cqd.
 INTRUSIVE CONTACT
 Furnace limestone
 FAULT CONTACT
 Gneiss and quartz-monzonite undifferentiated

QUATERNARY
CARBONIFEROUS
CRETACEOUS (?)

Contact
 Solid where exposed; long-dashed where accurately inferred; short-dashed where approximately inferred; dotted where concealed.

Fault
 Showing dip and relative movement. Solid where exposed; long-dashed where accurately inferred; short-dashed where approximately inferred; dotted where concealed. U, upthrown side; D, downthrown side; single-barbed arrows indicate relative horizontal movement. Diamond-pointed arrow indicates plunge of slickensides; double-barbed arrow indicates plunge of drag-fold axes.

Trace of fissure
 Hachures indicate downthrown side.

Anticline and syncline
 Showing plunge. Solid where accurately inferred; dashed where approximately inferred; dotted where concealed.

Monocline
 Arrows indicate direction of downdropped limb. Solid where accurately inferred; dashed where approximately inferred; dotted where concealed.

Strike and dip of beds
 Strike and dip of color bands