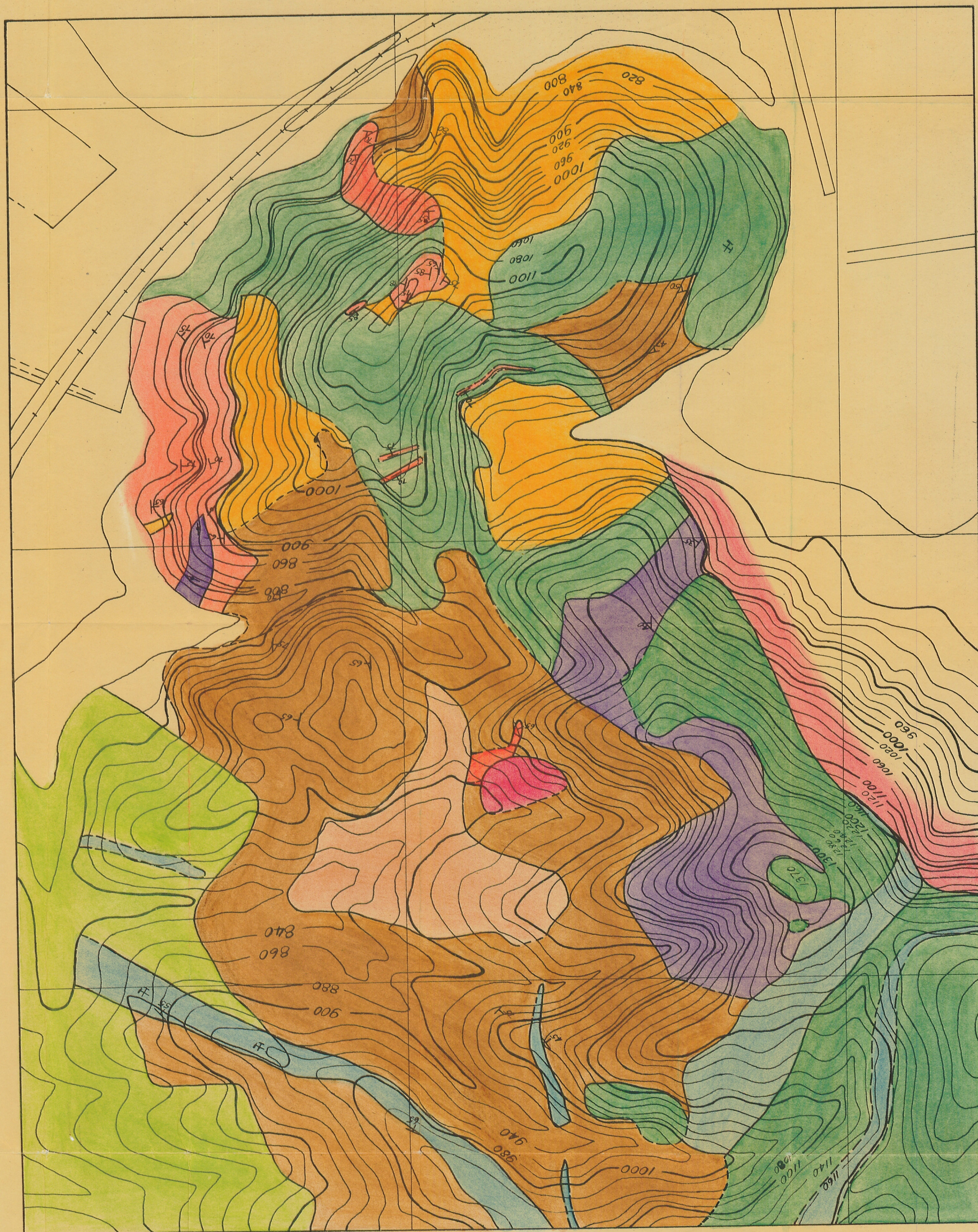


LEGEND

- PLEISTOCENE
- INTRUSIVE CALCITE
 - CONGLOMERATE
 - IRREGULARLY BEDDED AND BRECCIATED RHYOLITIC FLOW
- UPPER MIOCENE
- RHYOLITIC FLOW BRECCIA
 - IRREGULARLY BEDDED RHYOLITIC FLOW
 - REGULARLY BEDDED RHYOLITIC FLOW
 - MASSIVE RHYOLITIC FLOW
- MIOCENE
- TUFFACEOUS SEDIMENTS
- JURASSIC
- BASEMENT COMPLEX
- CONTACTS—
- EXACT
 - APPROXIMATE
- DIRECTION OF STRIKE AND DIP
- CULTURE—
- QUARRY
 - RAILROAD
 - PAVED ROAD
 - UNIMPROVED ROAD

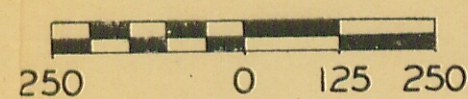


GEOLOGIC MAP OF AREA SOUTH OF SPADRA

PUENTE HILLS LOS ANGELES COUNTY CALIFORNIA

SCALE - 1 INCH = 250 FEET

CONTOUR INTERVAL = 20 FEET



GEOLOGY BY M.S. AKMAN

APRIL 1943

TOPOGRAPHY FROM LOS ANGELES METROPOLITAN WATER SUPPLY PUENTE HILLS AREA MAP