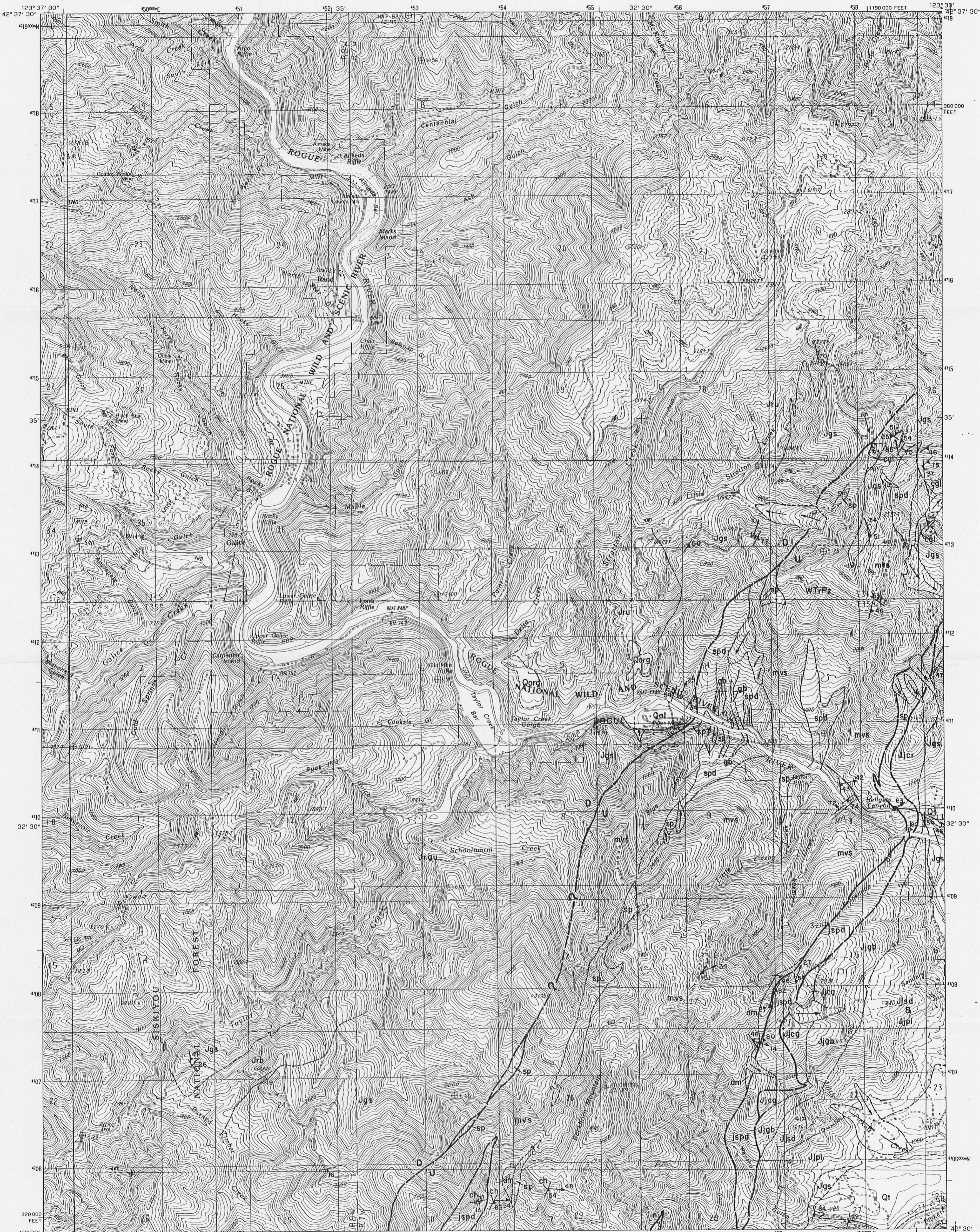
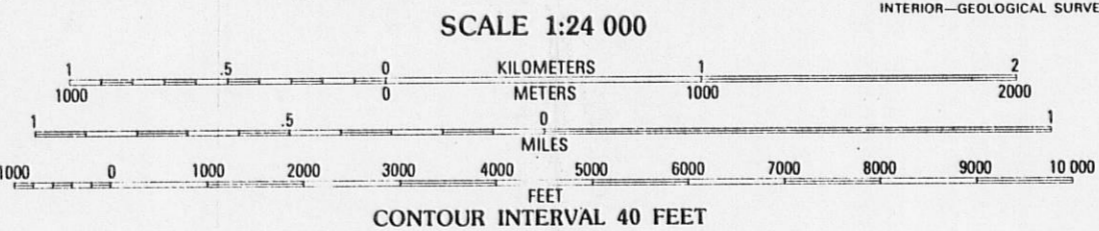


Yule-JA-1996



PRODUCED BY THE UNITED STATES GEOLOGICAL SURVEY
CONTROL BY.....USGS AND NOS/NOAA
COMPILED FROM AERIAL PHOTOGRAPHS TAKEN.....1984
FIELD CHECKED.....1986. MAP EDITED.....1989
PROJECTION.....LAMBERT CONFORMAL CONIC
GRID: 1000-METER UNIVERSAL TRANSVERSE MERCATOR.....ZONE 10
10,000-FOOT STATE GRID TICKS.....OREGON SOUTH ZONE
UTM GRID DECLINATION.....0°23' WEST
1989 MAGNETIC NORTH DECLINATION.....18°00' EAST
VERTICAL DATUM.....NATIONAL GEODETIC VERTICAL DATUM OF 1929
HORIZONTAL DATUM.....1927 NORTH AMERICAN DATUM
To place on the predicted North American Datum of 1983,
move the projection lines as shown by dashed corner ticks
(21 meters north and 97 meters east)
There may be private inholdings within the boundaries of any
Federal or State reservations shown on this map
No distinction made between houses, barns, and other buildings

PROVISIONAL MAP
Produced from original
manuscript drawings. Informa-
tion shown as of date of
photography.



THIS MAP COMPLIES WITH NATIONAL MAP ACCURACY STANDARDS
FOR SALE BY U. S. GEOLOGICAL SURVEY
DENVER, COLORADO 80225, OR RESTON, VIRGINIA 22092

ROAD LEGEND

Improved Road
Unimproved Road
Trail

○ Interstate Route ○ U. S. Route ○ State Route

GALICE, OREGON
PROVISIONAL EDITION 1989
42123-E5-TF-024

1	2	3	1 Banker Creek
			2 Mount Reuben
			3 Glendale
4	5		4 Mount Peavine
			5 Merlin
			6 Chrome Ridge
			7 Onion Mountain
6	7	8	8 Wilderville

ADJOINING 7.5 QUADRANGLE NAMES