

KEY
 SEDIMENTARY
 AND
 METAMORPHIC ROCKS

- Qal Alluvium
 - Pdv Death Valley formation
 - Ph Hanaupah formation
 - Prd Redlands dolomitic limestone
 - Pr Radcliff formation
 - Psd Sentinel dolomite
 - Pw Wildrose formation
 - Pmg Mountain Girl conglomerate-quartzite
 - Pmp Middle Park formation
 - Psdl Sour Dough limestone
 - Ps Surprise formation
 - Pm Marvel dolomitic limestone
 - pmc Panamint metamorphic complex
- Telescope group
- LOWER PALEOZOIC (?)
- PRE-CAMBRIAN AND LOWER PALEOZOIC (?)

IGNEOUS ROCKS

- Wbp World Beater porphyry (porphyritic granite)
 - Micp Little Chief porphyry (granite porphyry)
 - gr granite
- MESOZOIC (?) PRE-CAMBRIAN (?)

Approximate location of the Panamint District as mapped (See Plate 2)

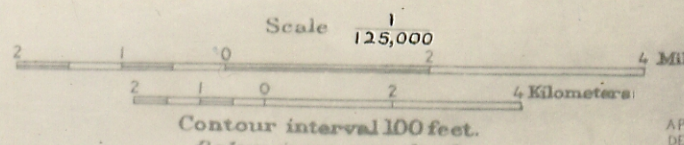
Actual and inferred boundaries

- Tunnel
- Prospect

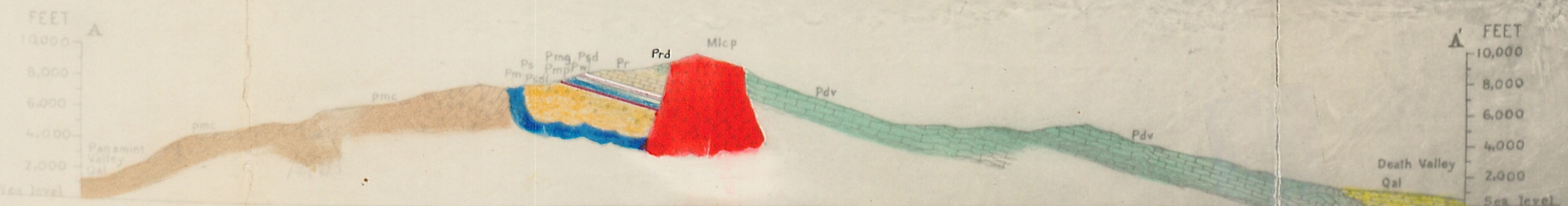
MINES AND PROSPECTS

1. Grundy mine.
2. Burro mine.
3. New Discovery (Gem group).
4. Horn Spoon mine.
5. Camp Bird mine.
6. Stewart's Wonder workings.
7. Wyoming workings.
8. Kenneth prospect.
9. Revenue prospect.
10. Bachelor workings.
11. Hemlock mine.
12. Alabama and Hudson River prospects.
13. Mt. Girl and Mt. Girl Ext. properties.
14. Radcliff mine.
15. World Beater mine.
16. Big Horn mine (formerly Gibraltar).
17. Anthony mine.

Geology by F. Mac Murphy
 Surveyed 1927, 1928.



RECONNAISSANCE GEOLOGIC MAP OF A PART OF THE PANAMINT RANGE, CALIFORNIA



SECTION ALONG LINE A-A

Base enlarged from U.S. Geol. Survey
 Maps of the Ballarat, Furnace Creek and
 Searles Lake quadrangles
 Culture revised and minor topographic changes
 made in 1928 by F. Mac Murphy

Sea level

Sea level